



2 ZIMMER WOHNUNG, LATSCHACH AM FAAKERSEE

## Cozy apartment - fully furnished

Object number: EQAD1

[View and rent online](#)

<b>Period</b>	19/01/ - 19/02/2025
<b>Number of persons</b>	2
<b>Total incl. VAT.</b>	€ 1.311,36
<b>Security deposit</b>	€ 1.000,00

The cozy little apartment is on the first floor of a former hotel, not far from the beautiful, turquoise-blue Faakersee.



### Living space

45m<sup>2</sup>



### Maximum occupancy

3 Persons



### Complete accommodation <sup>?</sup>

1 private bathroom 1 Separated bedroom



### 2. floor

Elevator available



### Check-in

14:00 - 18:15 Clock



### Check-out

14:00 - 18:15 Clock

## Sleeping options

### Sleeping room



1x Double bed (1,60 m x 2 m)



1x Children/baby bed



1x Sofa bed (2 persons)

## Descripton of accommodation

The apartment is comfortably and modernly furnished. You have a small anteroom, a kitchen with dining area, bathroom with shower and separate toilet.

Double bed with 1.80 m and a built-in wardrobe.

Nicely furnished living room and balcony.

Own parking space in front of the house.

Towels, dishes and bed linen are available. Flat screen TVs in the bedroom and living room - WiFi connection for free use is included in the rent.

## Equipment features

### Basic equipment

- Balcony
  - TV
  - Bedclothes
  - Private toilet
  - Cleaning utensils
  - Internet/Wifi
  - Community washing machine
  - Towels
  - Vacuum cleaner
  - Hairdryer
- 

### First supply

- Toilet paper
- 

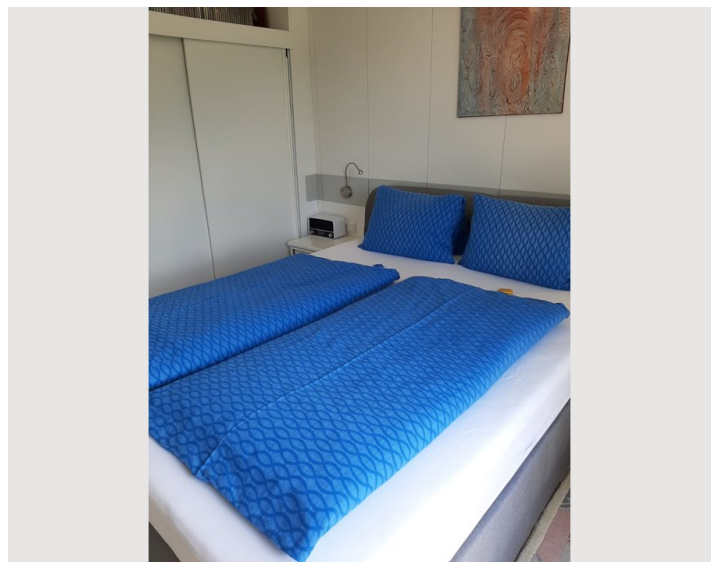
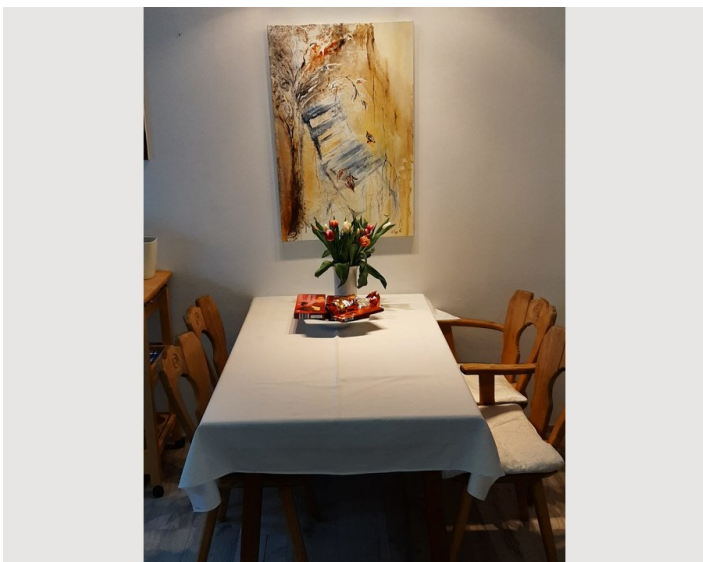
### Kitchen

- Private kitchen
- Glasses/Tableware
- Microwave
- Cooking utensils
- Espresso machine

## Informations


- Suitable for children
- Private entrance
- Regular cleaning at extra cost
- Smoking not allowed
- Pets forbidden


## Picture gallery






### Infrastructure

 Busstop

 Supermarket

 Trainstation

---

Restaurant can be reached on foot in 2 minutes,  
Village infrastructure is about 2 km away. There is a bus stop opposite the building. The next train station is about 2km away.

**Location**

