



STUDIO APARTMENT, LEONDING

Entire flat near the Kürnbergwald forest on the outskirts of Linz

Object number: LEIW1

[View and rent online](#)

*** Rent entire flat with balcony with excellent location at Kürnbergwald / outskirts of Linz ***

Period	19/01/ - 19/02/2025
Number of persons	2
Total incl. VAT.	€ 1.422,47
Security deposit	€ 1.100,00



Living space

35m²



Maximum occupancy

2 Persons



Complete accommodation [?]

1 private bathroom 1 Living-Sleepingroom



Ground floor



Check-in

17:00 - 21:00 Clock



Check-out

08:00 - 14:00 Clock

Sleeping options

Living and sleeping



1x Double bed (1,80 m x 2 m)



1x Sofa bed (1 person)

Descripton of accommodation

Incl. WLAN, TV and parking space

With its excellent location, the flat invites you to relax after a day at work. It is a stone's throw away from the Kürnbergwald forest on the outskirts of Linz and offers countless opportunities for sports such as cycling, hiking or simply relaxing.

Generally renovated in summer 2020 - has a spacious balcony - completely newly furnished - fully equipped

Equipment features



Basic equipment

- Balcony
- Internet/Wifi
- TV
- Private dryer
- Towels
- Private parking space
- Cleaning utensils
- Garden sharing
- Music system/docking station
- Private washing machine
- Bedclothes
- Private toilet
- Vacuum cleaner



First supply

- Toilet paper
- Soap



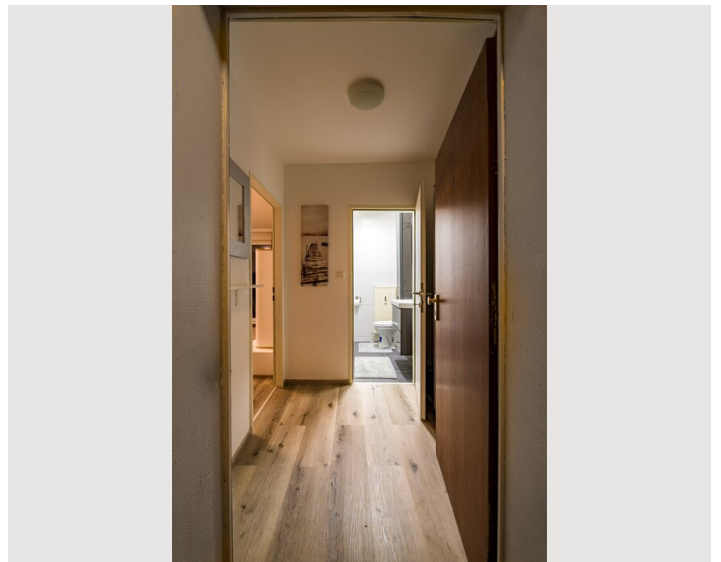
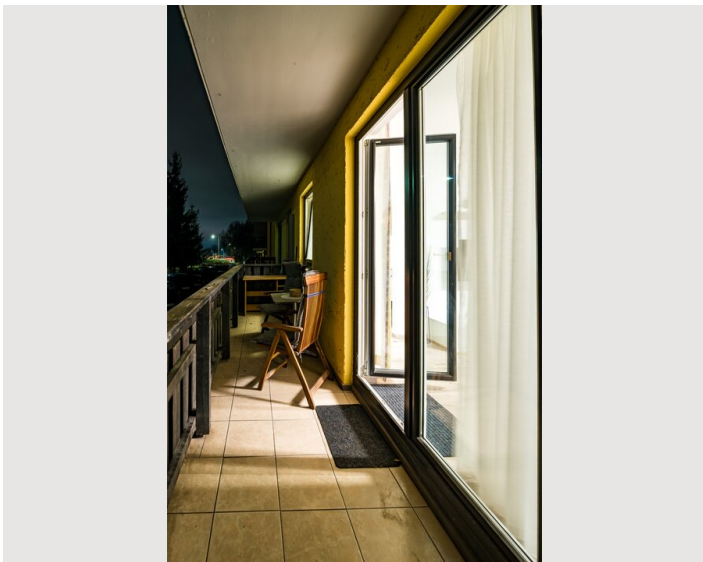
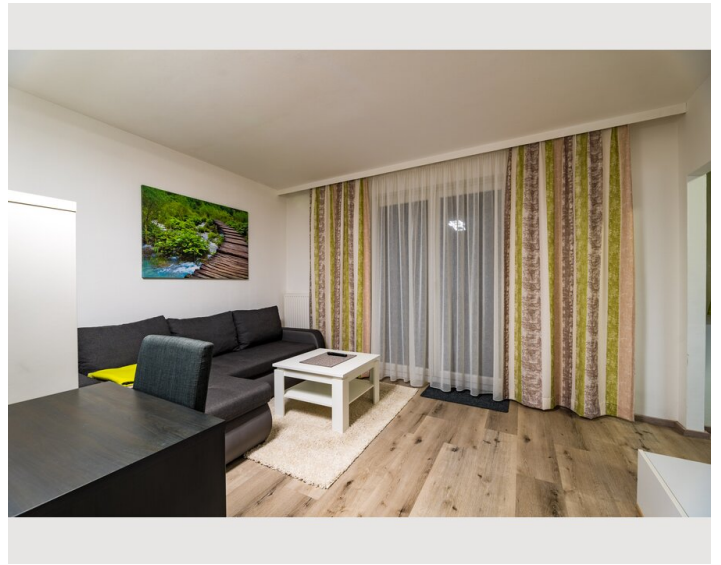
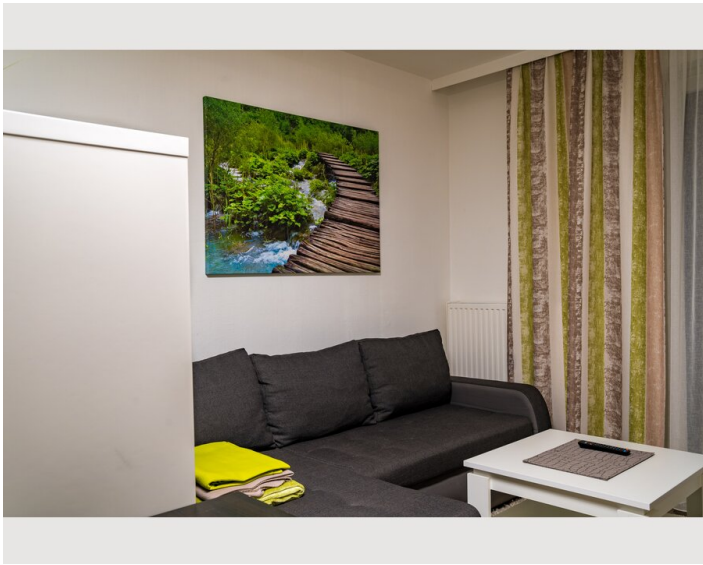
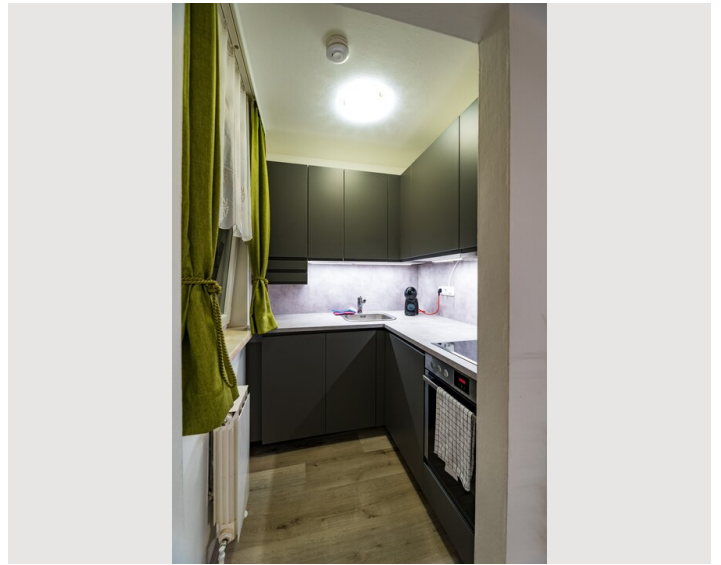
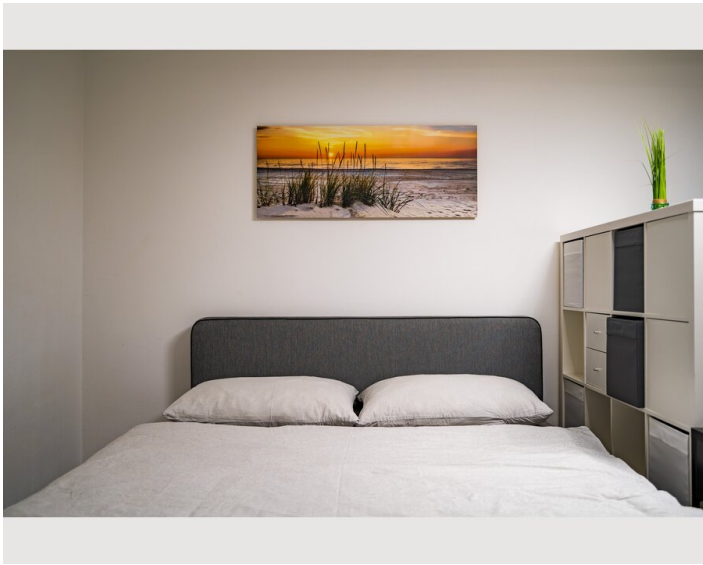
Kitchen

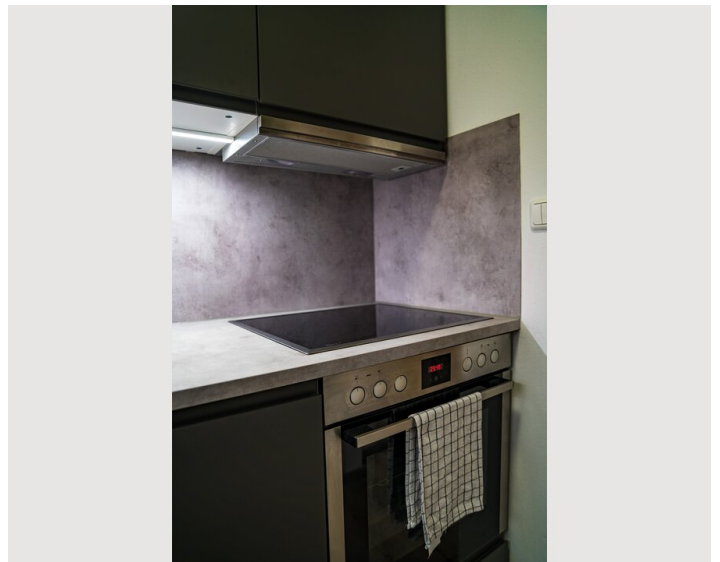
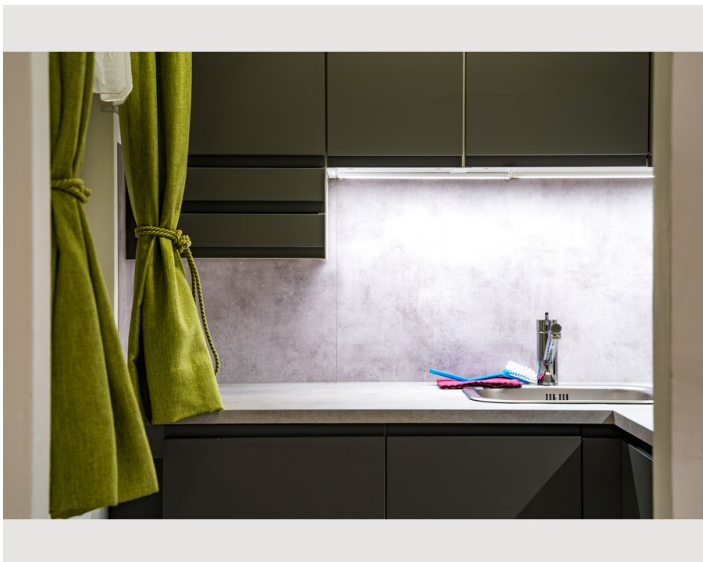
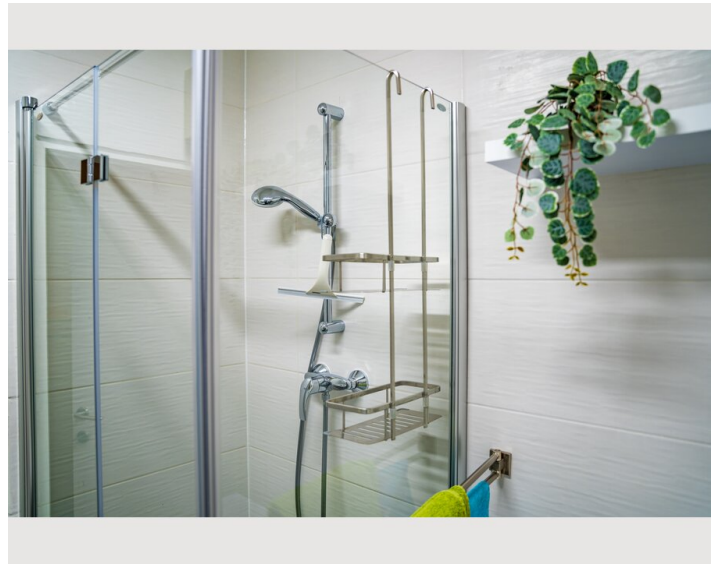
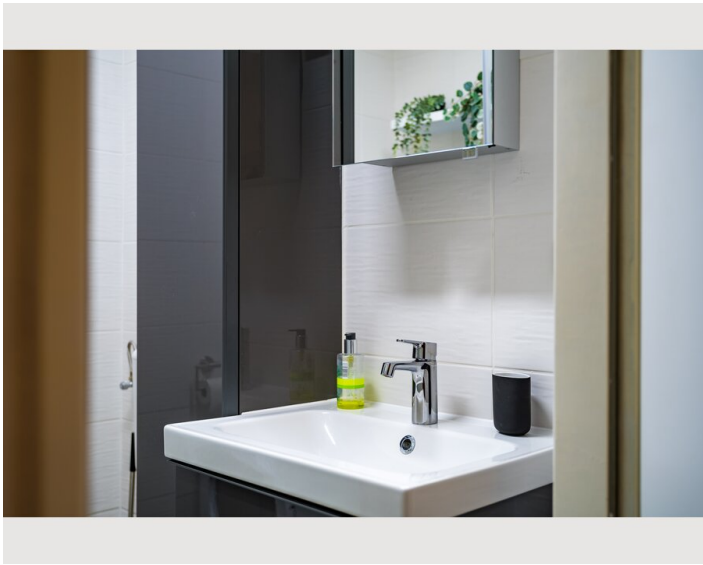
- Private kitchen
- Glasses/Tableware
- Dishwasher
- Cooking utensils
- Coffee machine

Informations


- Smoking not allowed
- Pets forbidden

Picture gallery





Infrastructure

 Citybus stop directly in front of the apartment

 Supermarket within easy reach

A city bus stop is directly on the street and the main square in Linz can be reached in a few minutes. The flat has its own parking space, which saves you a long search for a parking space.

For recreation, there are various hiking and cycling trails in the Kürnberg forest, which is only a stone's throw away from the flat.

Location

