

HOUSE, 8580 KÖFLACH

House, Lipizzaner Heimat – Köflach

Object number: WJUR1

[View and rent online](#)

Period	21/12/2025 - 21/01/2026
Number of persons	2
Total incl. VAT.	€ 1.525,52
Security deposit	€ 1.100,00

Stylish 3-storey flat in a semi-detached house with garden in an absolutely peaceful location in Köflach. Situated on a hill between the Lipizzaner stud farm Piber and the Wellness Therme Nova, this residential opportunity offers the perfect opportun

Living space 120m²	Ground floor
Maximum occupancy 6 Persons	Check-in 08:00 - 20:00 Clock
Complete accommodation 3 Private bathrooms 1 Separated bedroom 2 Shared bedrooms	Check-out 08:00 - 20:00 Clock

Sleeping options

Sleeping room



1x Double bed (1,60 m x 2 m)

Living and sleeping 1



1x Sofa bed (2 persons)

Living and sleeping 2



1x Sofa bed (2 persons)

Descripton of accommodation

The 120 m² accommodation is on 3 levels and can sleep a maximum of 6 people. The ground floor and the first floor have parquet floors, while the fully finished basement with exit to the garden has Italian Daino flooring. Each floor has a bathroom with marble and travertino fittings. Large French windows on all floors convey a feeling of well-being in the countryside. On the ground floor, in addition to the entrance area, there is a spacious Eß-living room with balcony, a fully equipped kitchen, a bathroom with WC, bidet and shower. The upper floor comprises a living room with balcony, a bedroom and a bathroom with WC and bathtub. The basement has been completely finished and offers a terrace room with exit to the garden, another room with small raised window, a small working area with washing machine, tumble dryer and additional small freezer, a bathroom with WC, bidet and shower; both rooms are equipped with a pull-out double couch. The garden area is terraced and maintained by a gardener.

Equipment & Features



Basic equipment

- Balcony
- Garden
- Private washing machine
- Bedclothes
- Private parking space
- Iron & ironing board
- Terrace
- TV
- Private dryer
- Private toilet
- Vacuum cleaner
- Cleaning utensils



First supply

- Soap



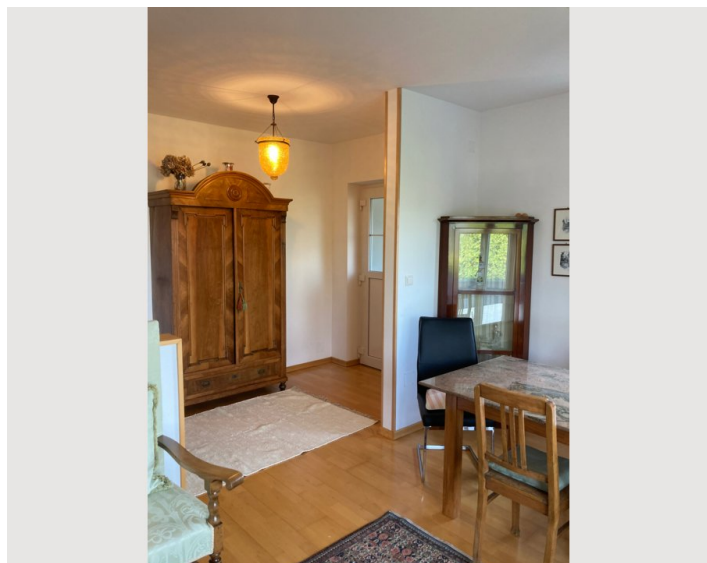
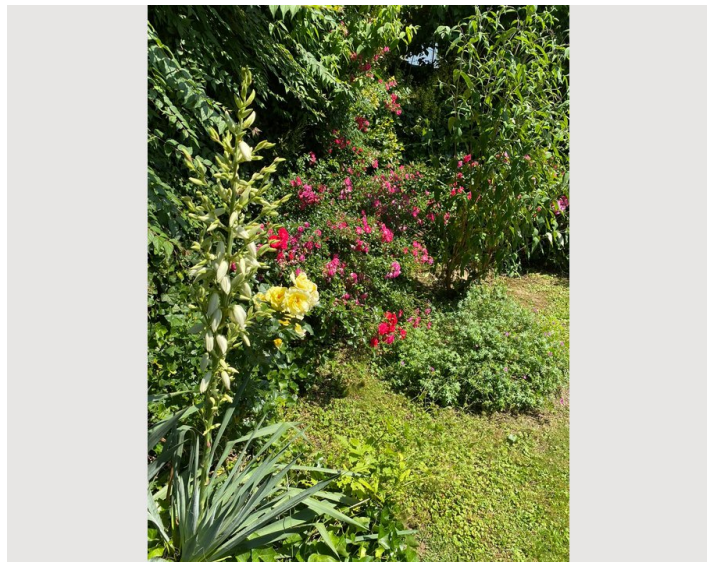
Kitchen

- Private kitchen
- Glasses/Tableware
- Dishwasher
- Cooking utensils
- Espresso machine
- Microwave

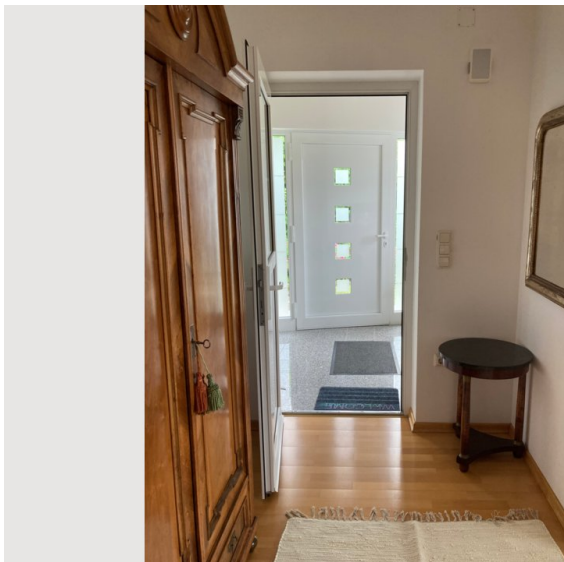
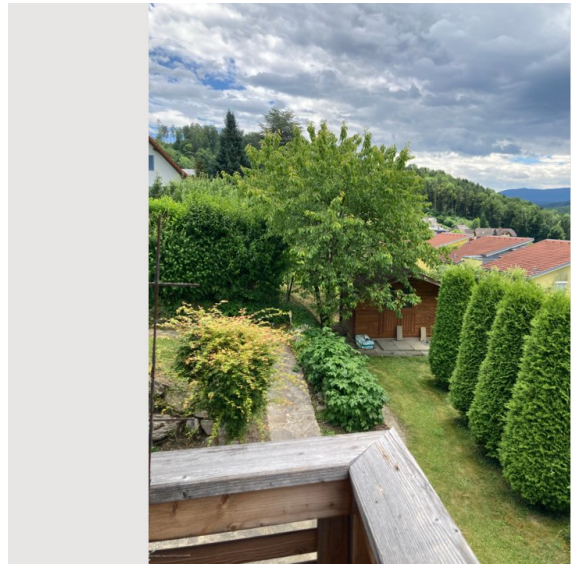
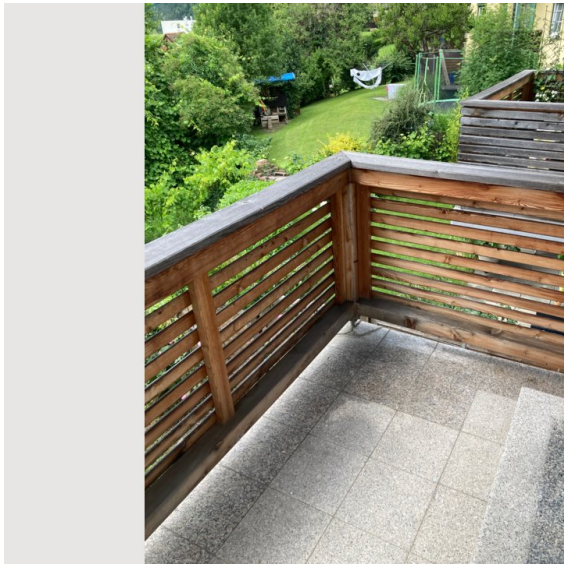
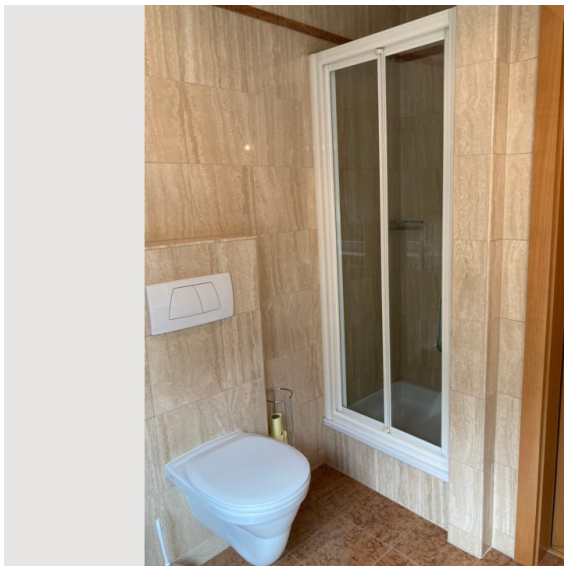
Informations

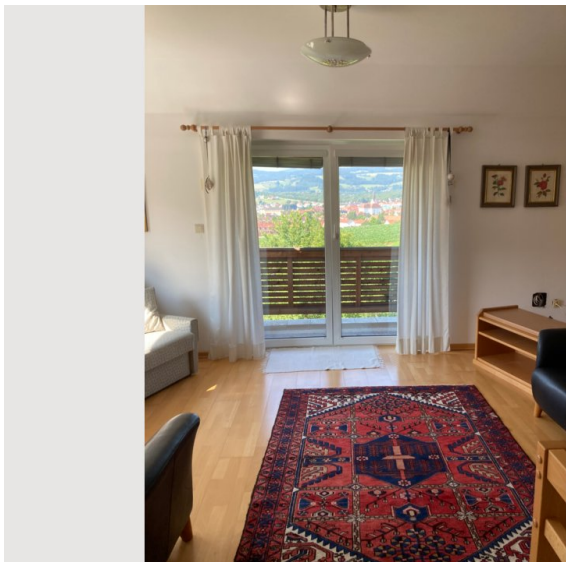
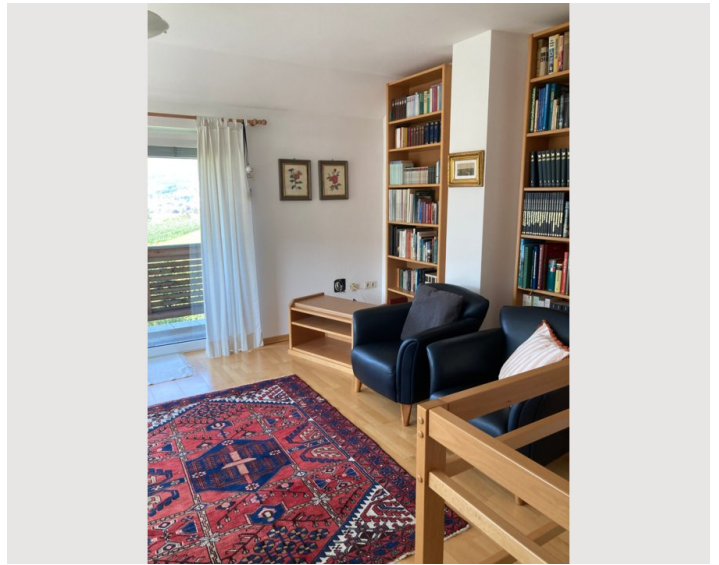
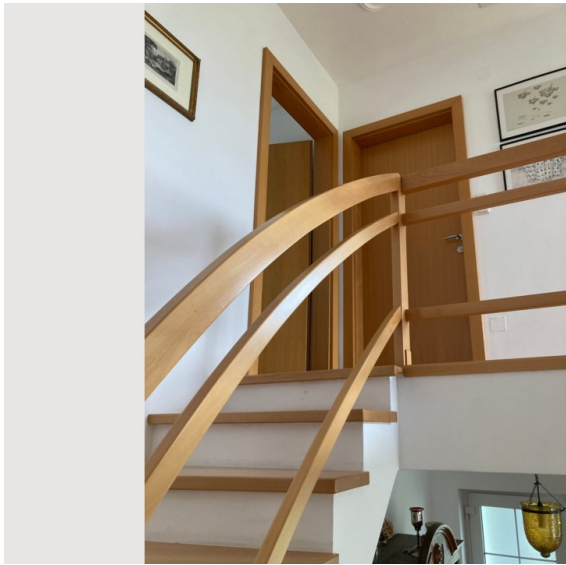
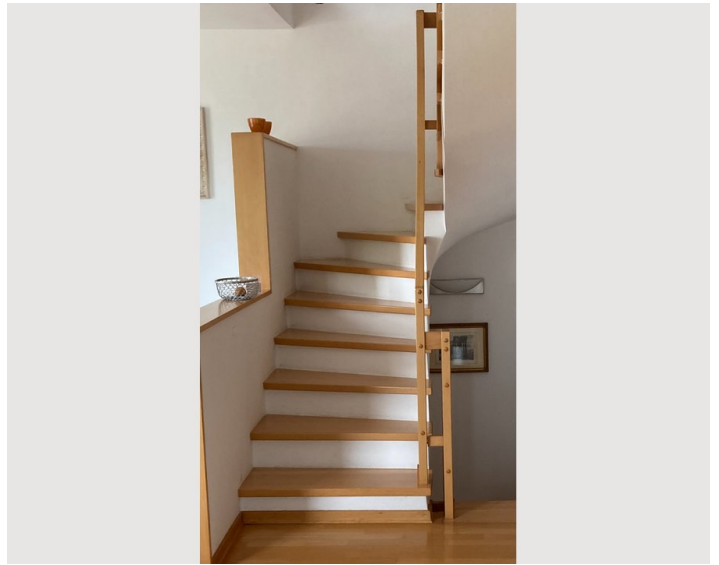
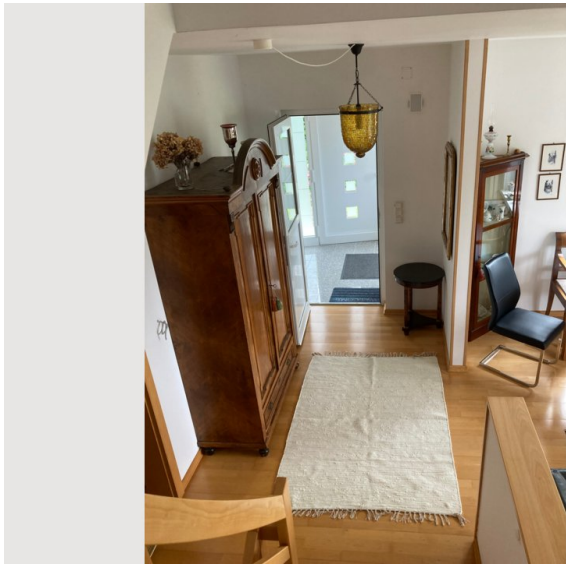
- Suitable for children
- Desk/Workplace
- Pets on request
- Smoking not allowed
- Private entrance

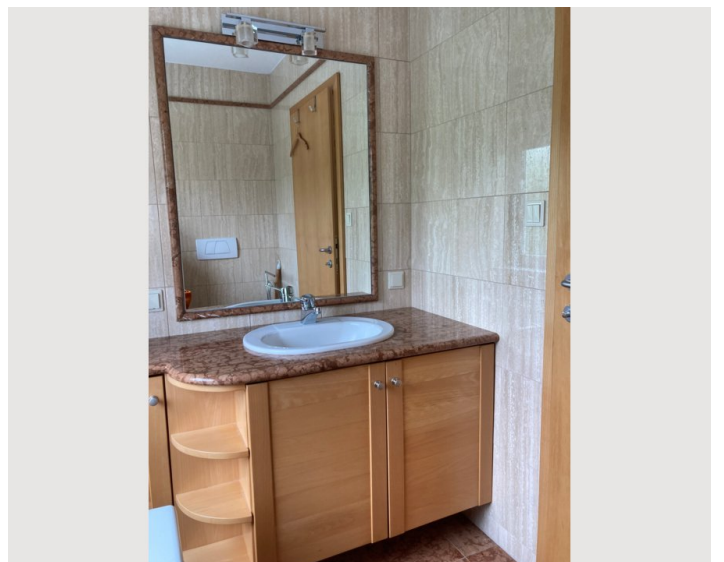
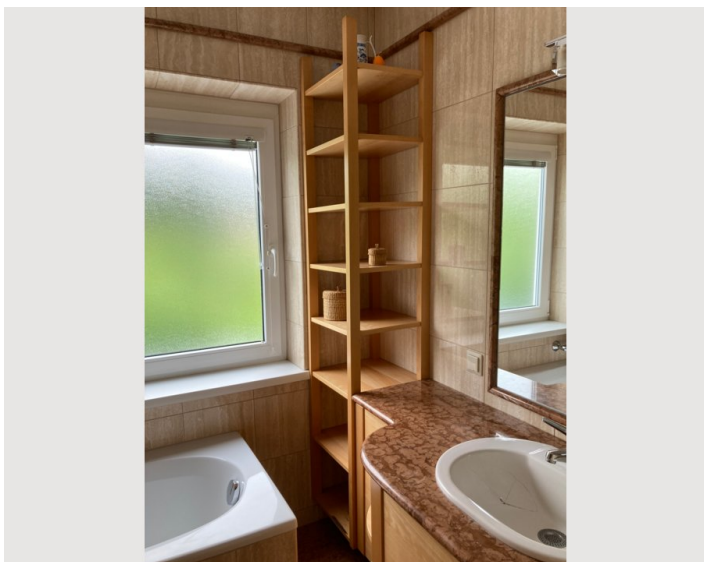
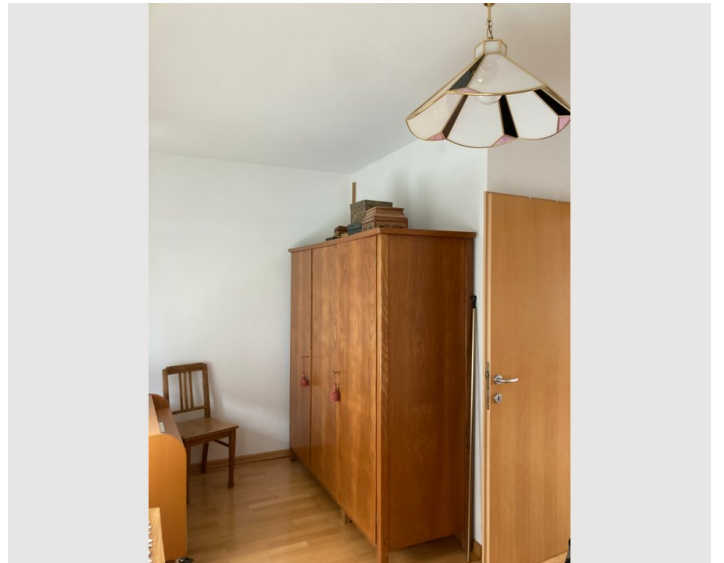
Picture gallery

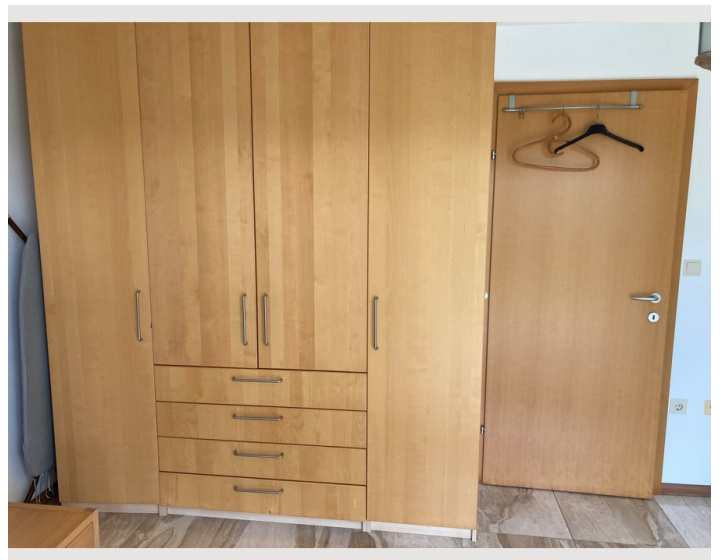
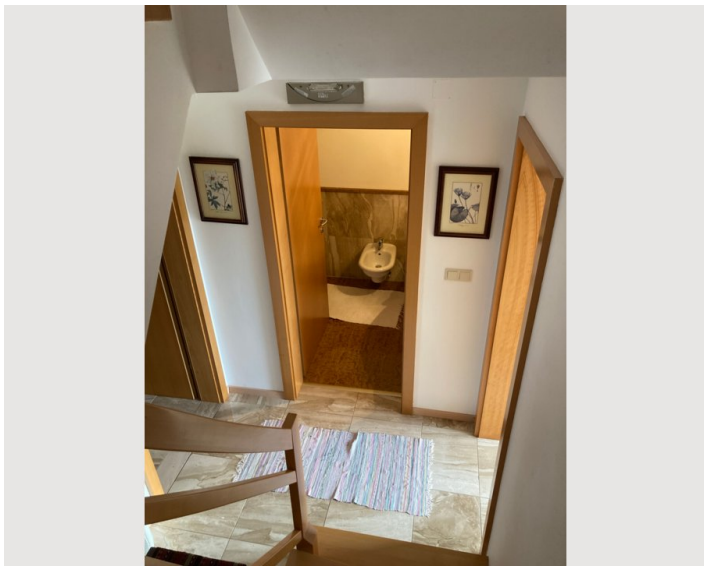
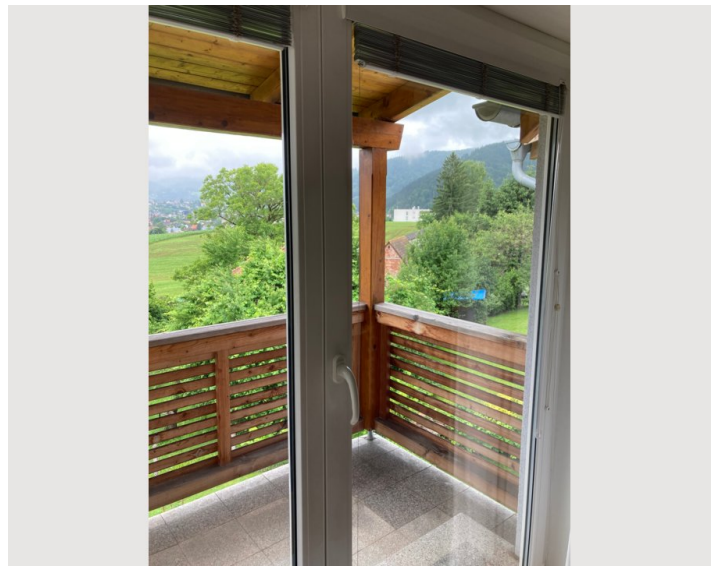


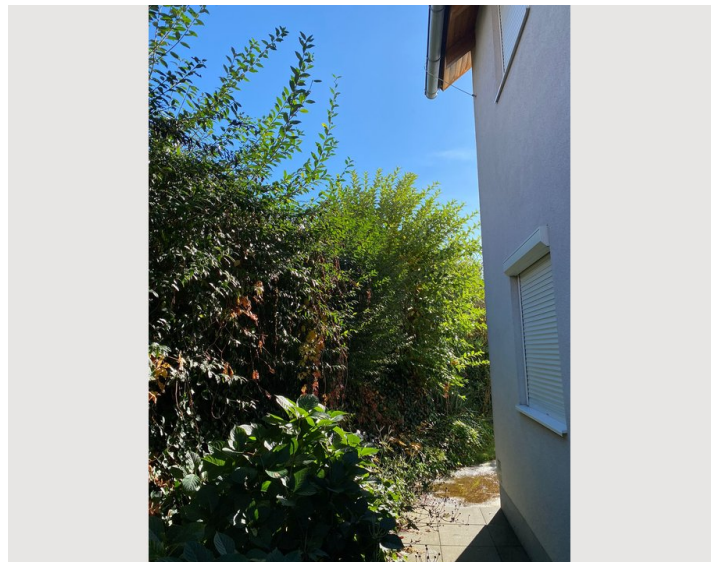
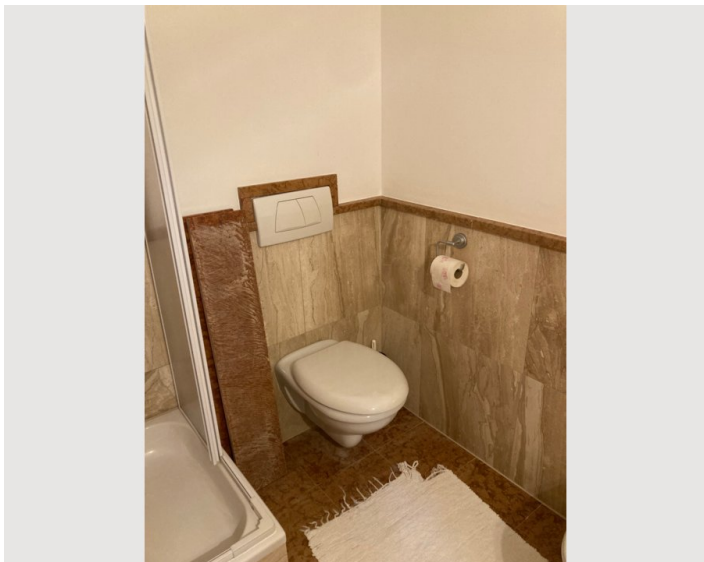


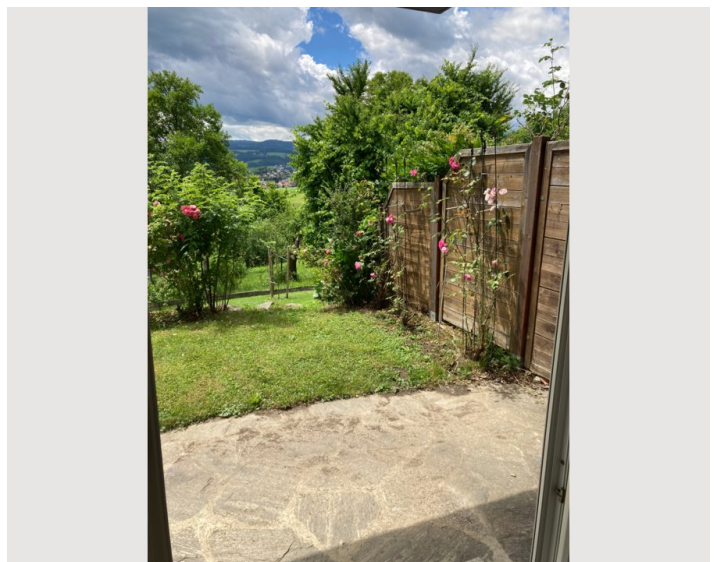
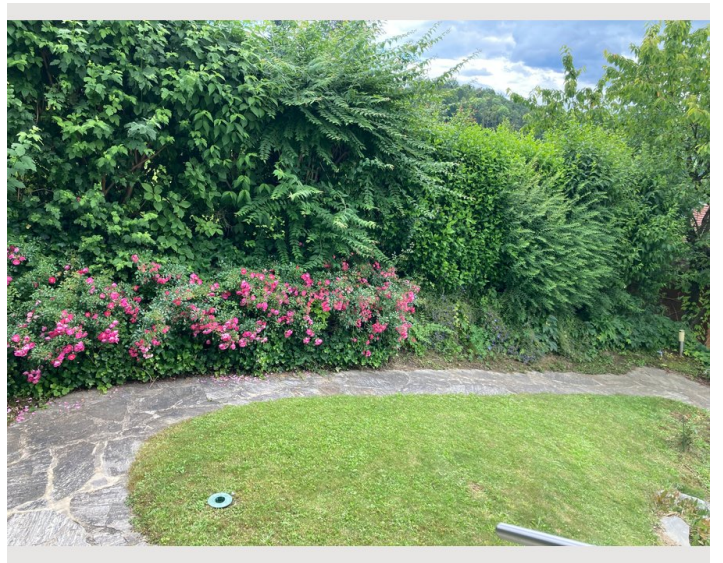
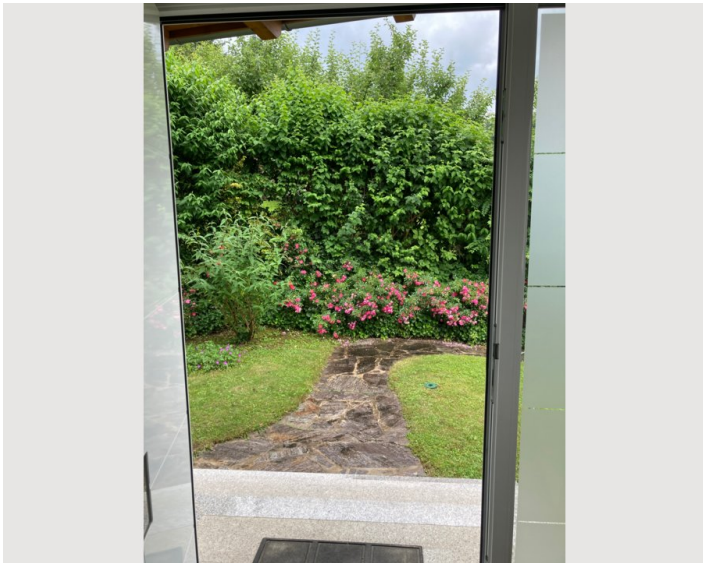
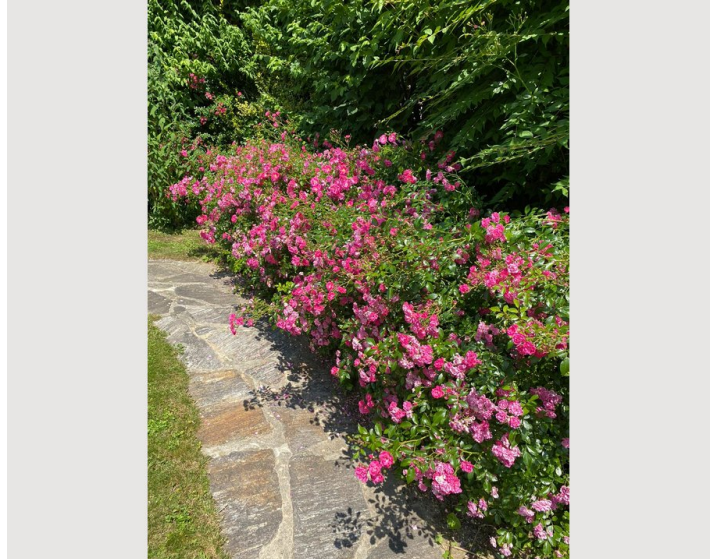












Infrastructure



The apartment is located in a small row or semi-detached house settlement in the middle of the beautiful hilly landscape of the Lipizzanerheimat, 1 km from the centre of Köflach and only 35 km from the Styrian capital Graz. Situated on a hill, the flat offers a beautiful view of the town of Köflach. The Wellness Therme Nova Köflach is 400 m away and can be reached in 5 minutes on foot, while the traditional Lipizzaner stud farm Piber is 1.6 km or a 20-minute walk away. The Salzstiegl skiing area is 35 km away and can be reached in about 40 minutes by car. Attractive hiking opportunities are already on the doorstep as well as in the surrounding alpine pasture area of Western Styria, especially popular is the Lipizzaner pasture on the nearby Stubalpe, reachable by car in 30 minutes. A bus stop is located directly in front of the car park of the apartment complex.

Location

