



4 ROOM APARTMENT AND MORE, UNTERACH AM ATTERSEE

Luxury apartment at lake Attersee

Object number: MMII1

[View and rent online](#)

Period	16/01/ - 16/02/2025
Number of persons	2
Total incl. VAT.	€ 4.433,80
Security deposit	€ 3.000,00

Luxury apartment on the Attersee with 98m² of living space. Spacious garden with terrace and balcony. Light-flooded dining and living area. Pleasantly quiet location. 360° view: <https://tour.ogulo.com/e1ie>



Living space

98m²



Maximum occupancy

4 Persons



Complete accommodation [?]

1 private bathroom 2 Separated bedrooms



Ground floor



Check-in

00:00 - 00:00 Clock



Check-out

00:00 - 00:00 Clock

Sleeping options

Bedroom 1



1x Double bed (1,80 m x 2 m)



1x Children/baby bed

Bedroom 2



1x Double bed (1,80 m x 2 m)

Descripton of accommodation

98m² luxury apartment for up to 4 people divided into

- > kitchen
- > Dining & living area (incl. relaxation chair)
- > bathroom
- > 2 bedrooms (180x200cm double bed), cot on request
- > separate toilet
- > balcony
- > 250m² garden for sole use
- > Outdoor Lounge (in the garden and on the balcony)
- > Griller
- > 2 parking spaces (free); free WiFi; Washing machine and dryer on request

We ask for your understanding that no pets are allowed in the apartment.

Equipment features



Basic equipment

- Balcony
- Internet/Wifi
- TV
- Private dryer
- Private parking space
- Vacuum cleaner
- Cleaning utensils
- Garden
- Music system/docking station
- Private washing machine
- Private toilet
- Garage
- Iron & ironing board
- Hairdryer



Fireplace

- Charcoal grill
- Tiled stove
- Open fireplace



First supply

- Toilet paper
- Nespresso capsules
- Soap



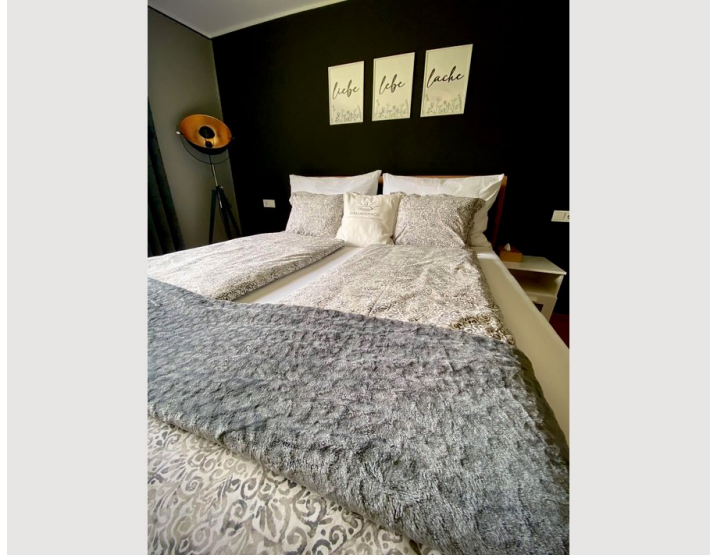
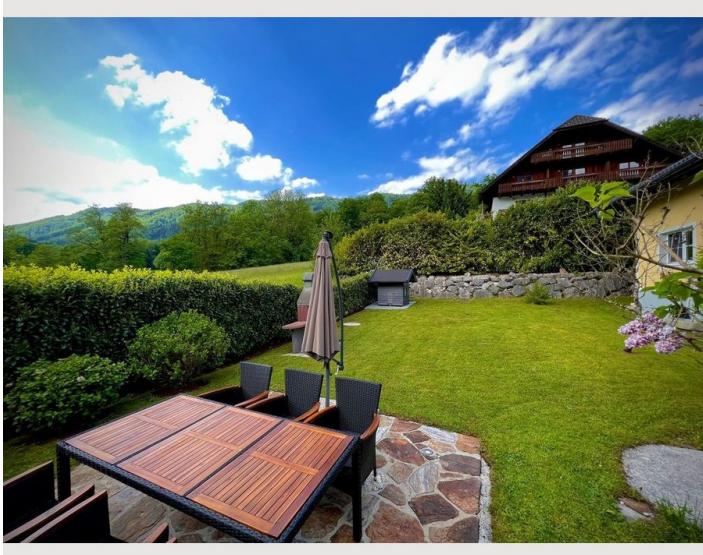
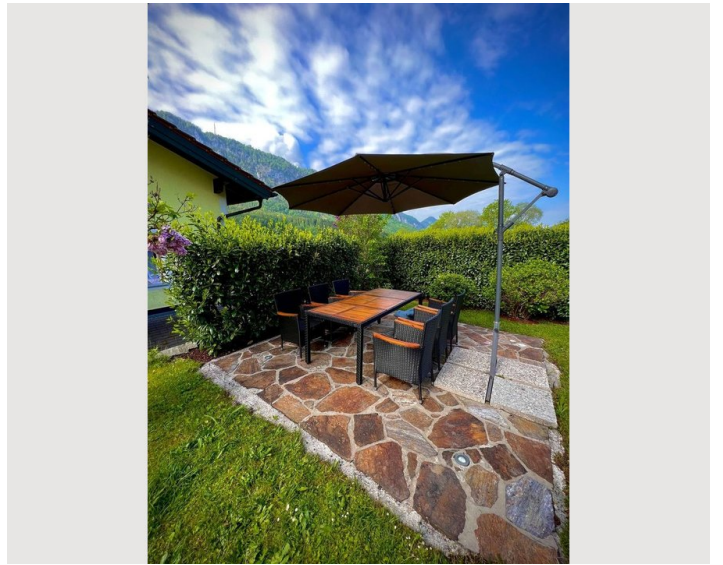
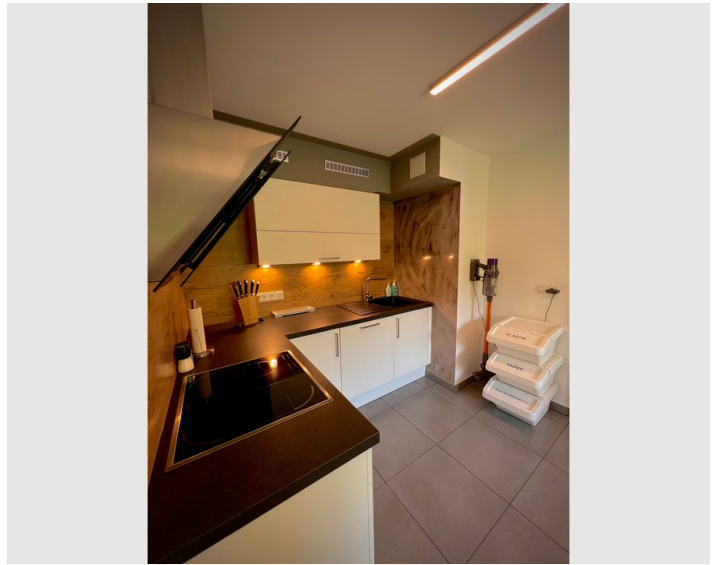
Kitchen

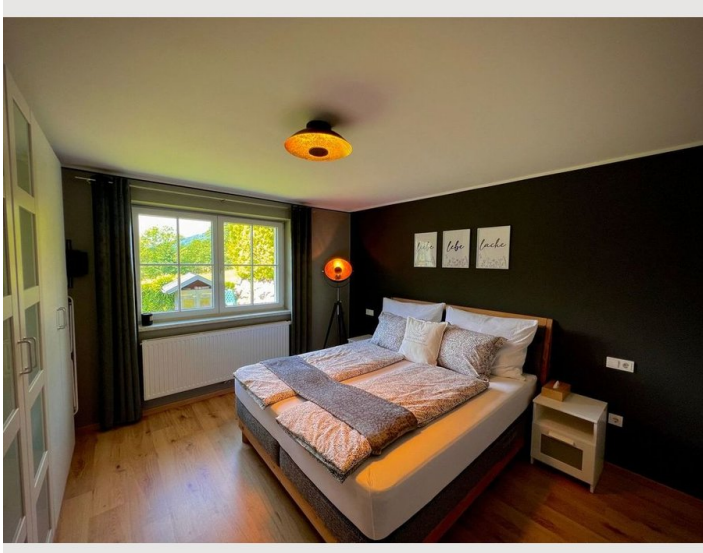
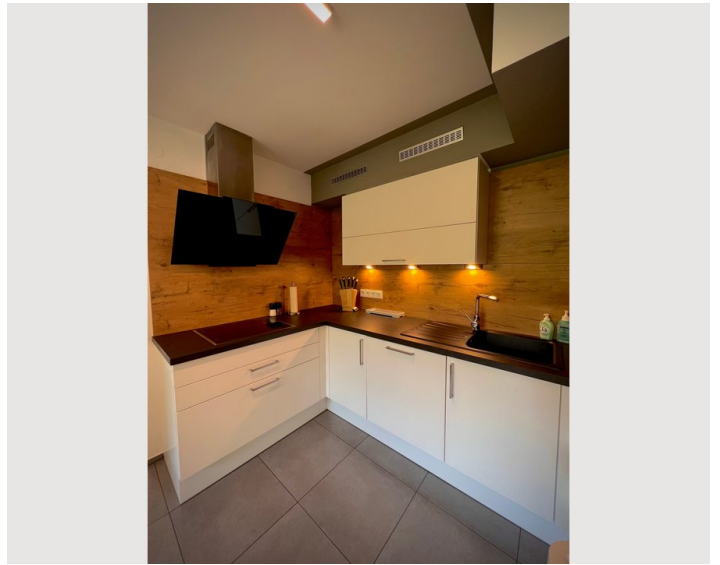
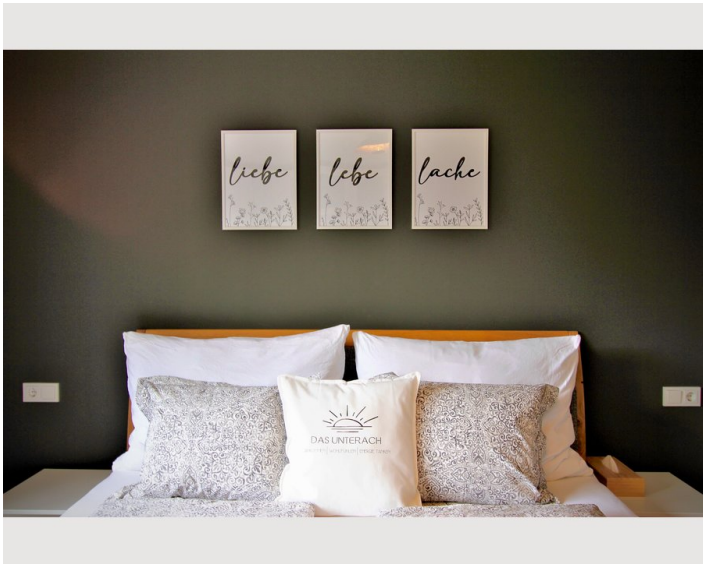
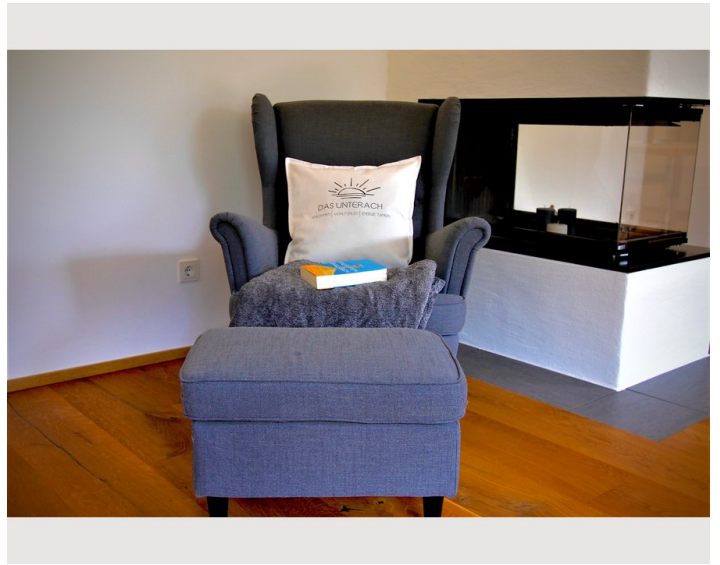
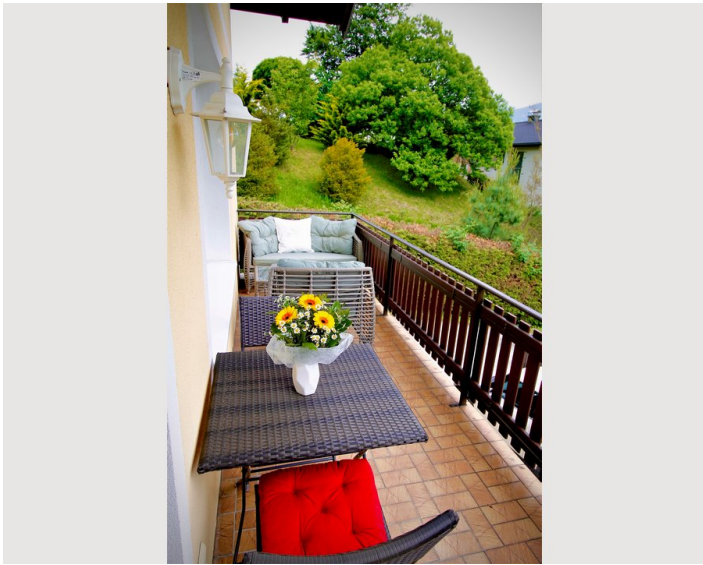
- Private kitchen
- Glasses/Tableware
- Cooking utensils
- Dishwasher

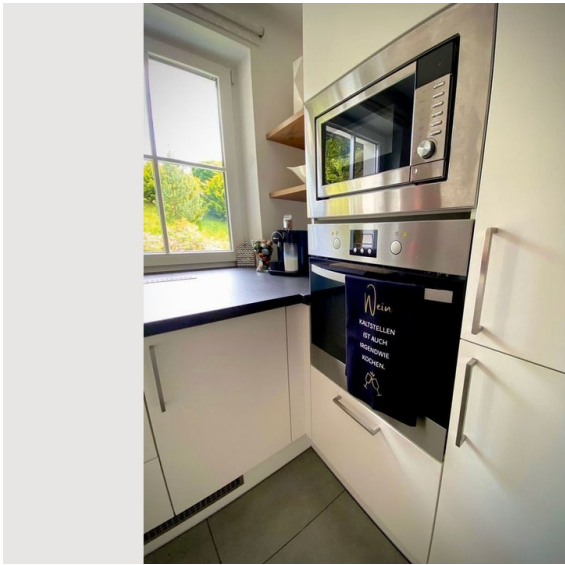
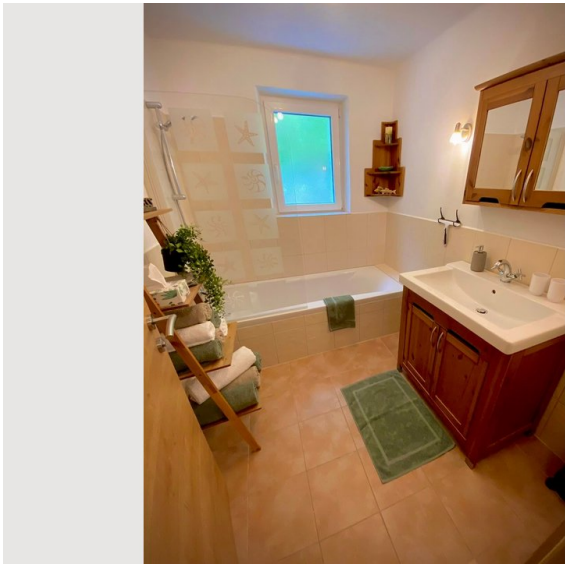
Informations

- Not suitable for children
- Desk/Workplace
- Pets forbidden
- Bicycle room free of charge
- Smoking not allowed
- Private entrance
- Regular cleaning at extra cost

Picture gallery







Video

Goto Video



Infrastructure



The nearest bus stop is a 5-minute walk away.

The nearest grocery store (SPAR) is a 3-minute drive away.

Further shopping facilities are available in Mondsee or St. Georgen in about 15 minutes by car.

Location

