



2 ZIMMER WOHNUNG, LINZ

Modern flat in Palais Bruckner

Object number: HDSK1

[View and rent online](#)

Modern apartment in the stylish Palais Bruckner with direct view to the Andreas-Hofer Park, just 1 tram station away from the main train station.

Period	16/01/ - 16/02/2025
Number of persons	2
Total incl. VAT.	€ 2.137,78
Security deposit	€ 1.700,00



Living space

76m²



Maximum occupancy

4 Persons



Complete accommodation [?]

1 private bathroom 1 Separated bedroom 1 Living-Sleepingroom



2. floor

Elevator available



Check-in

10:00 - 21:00 Clock



Check-out

10:00 - 21:00 Clock

Sleeping options

Sleeping room



1x Double bed (1,40 m x 2 m)

Living and sleeping



1x Sofa bed (2 persons)

Descripton of accommodation

This beautiful apartment is located in the Palais Bruckner with a direct view of the Andreas-Hofer-Park. The 76 m² apartment on the 2nd floor is light, calm, light-flooded and can be reached barrier-free with the elevator.

The Palais Brucker was built around 1900 and completely renovated in 2009. The renovation, which the architects Riepl+Riepl accompanied, gives the house a special architectural flair in which tradition meets modernity.

From the front door you enter the long hallway, which gives separate access to all rooms (suitable for a flat share). The bedroom and living room offer a direct view of the Andreas-Hofer-Park, which is only delimited from the house by a side street. You can reach the generous balcony with about 7.4 m² via the kitchen. This invites you to enjoy the sun in the morning with its north-east alignment. The apartment is rounded off with a practical storage room that offers a lot of storage space. The apartment is also assigned to an approximately 6m² basement compartment, which can also be reached with a lift. All rooms have three meters high ceilings and are equipped with underfloor heating, which is operated with district heating.

You can reach the tram (Herz-Jesu Church or Union crossing) in 5 minutes by foot. Kindergartens, schools, shops, pharmacies and doctors are all within walking distance just a few minutes away.

Equipment features



Basic equipment

- Balcony
- Private washing machine
- Towels
- Vacuum cleaner
- Cleaning utensils
- Internet/Wifi
- Bedclothes
- Private toilet
- Iron & ironing board
- Hairdryer



Pool

- Whirlpool



First supply

- Toilet paper
- Soap
- shampoo



Kitchen

- Private kitchen
- Glasses/Tableware
- Cooking utensils
- Dishwasher

Informations

- Suitable for construction workers
- Smoking not allowed
- Desk/Workplace
- Bicycle room free of charge
- Suitable for children
- Free short-term parking zone
- Pets forbidden

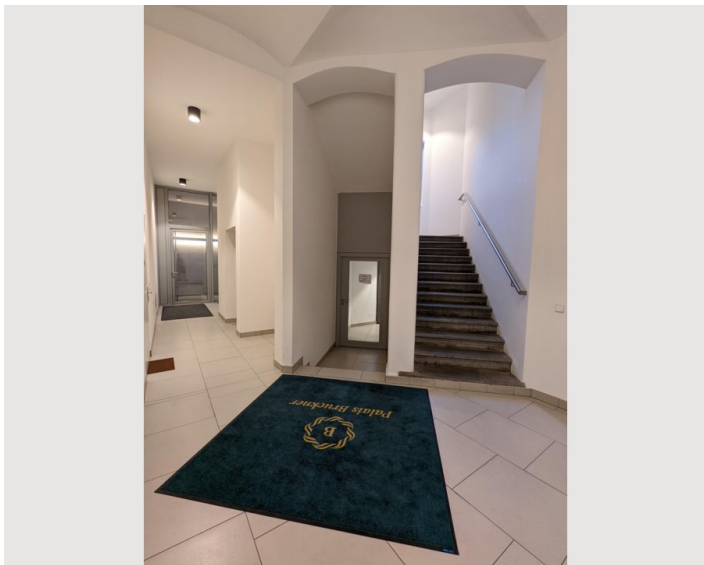
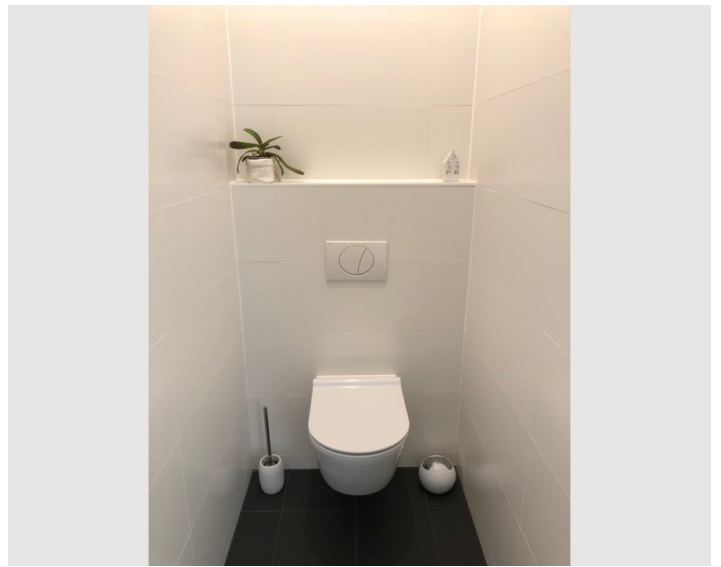
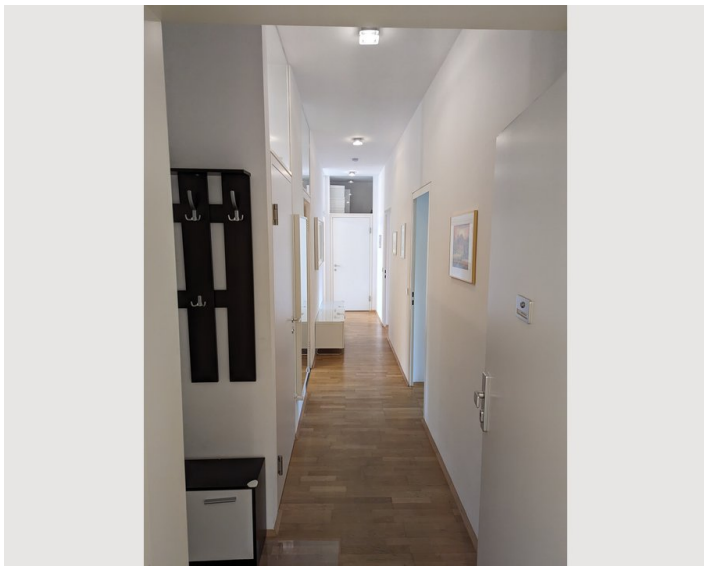
Additional services

- Cellar compartment (€ 0,00)






All prices are gross per month - billing is done directly with the lessor.

Picture gallery





Infrastructure

-  Novaragasse, 3 Minuten by foot
-  Unionkreuzung, 5 Minuten by foot
-  Central station is 1 tram station from the Union crossing away, 15 minutes on foot
-  The main square of Linz can be reached in about 10 minutes with the tram, half an hour on foot
-  The airport can be reached by car in 12 minutes

You can reach the tram (Herz-Jesu Church or Union crossing) in 5 minutes by foot. Kindergartens, schools, shops, pharmacies and doctors are all within walking distance, just a few minutes away from the flat.

Location

