



3 ROOM APARTMENT, VIENNA

Atelier Lomani - 1180 Wien - 110m² Appartement

Object number: LOCE3

[View and rent online](#)

Atelier Lomani is located in Vienna 18th and is easily accessible by public transport. Our flats are ideal if you are moving to Vienna temporarily for professional or private reasons and are looking for a fully furnished flat.

Period	16/01/ - 16/02/2025
Number of persons	2
Total incl. VAT.	€ 3.533,56
Security deposit	€ 2.600,00



Living space

110m²



Maximum occupancy

5 Persons



Complete accommodation [?]

1 private bathroom 2 Separated bedrooms 1 Living-Sleepingroom



1. floor



Check-in

15:00 - 23:00 Clock



Check-out

06:00 - 11:00 Clock

Sleeping options

Bedroom 1



1x Double bed (1,80 m x 2 m)



1x Sofa bed (1 person)

Bedroom 2



1x Double bed (1,80 m x 2 m)



1x Sofa bed (1 person)

Living and sleeping



1x Double bed (1,60 m x 2 m)

Descripton of accommodation

"Atelier Lomani - Apartment 6" is located in Vienna 18th and is easily accessible by public transport. The modern and fully furnished flat with a size of 110m², has 2.5 bedrooms, a living room, kitchen and dining area, bathroom, separate toilet and a spacious entrance. The flat is very elegantly and cosily furnished and the flat is very bright and friendly.

Equipment features

Basic equipment

- Garden sharing
- TV
- Bedclothes
- Private toilet
- Iron & ironing board
- Internet/Wifi
- Private washing machine
- Towels
- Vacuum cleaner
- Hairdryer

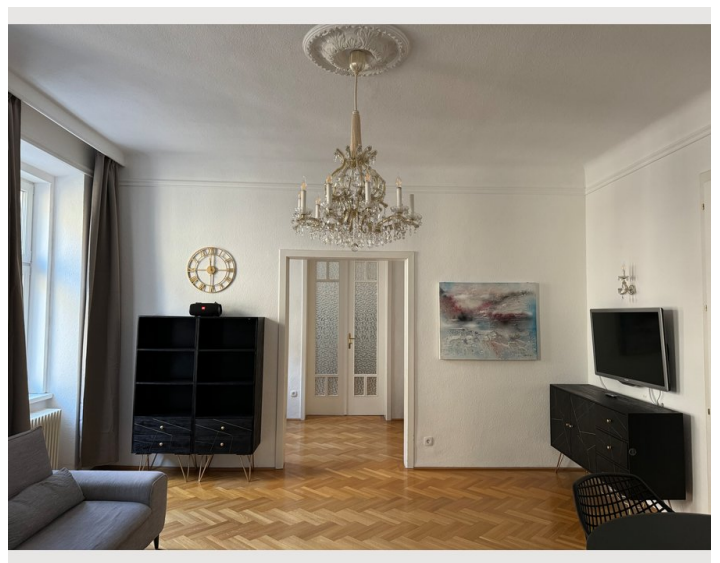
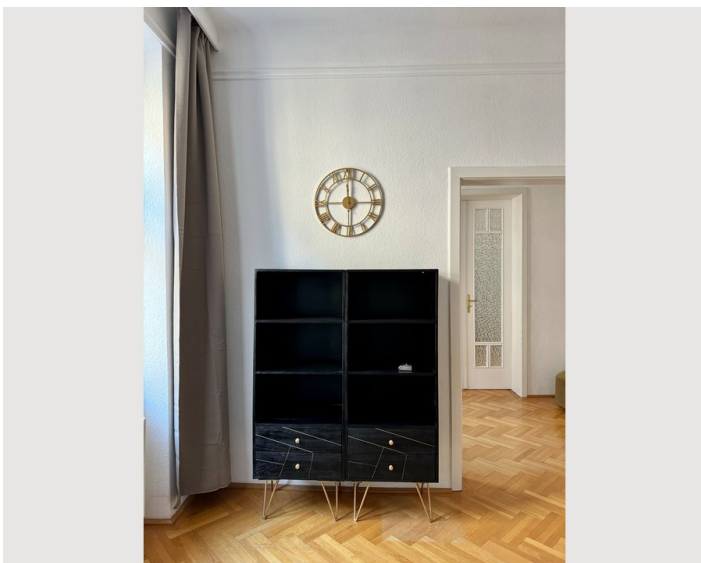
Kitchen

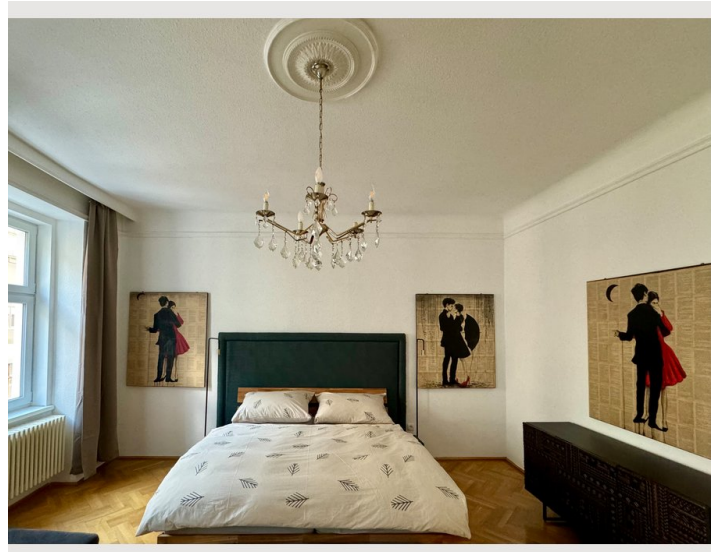
- Private kitchen
- Glasses/Tableware
- Dishwasher
- Cooking utensils
- Espresso machine
- Microwave

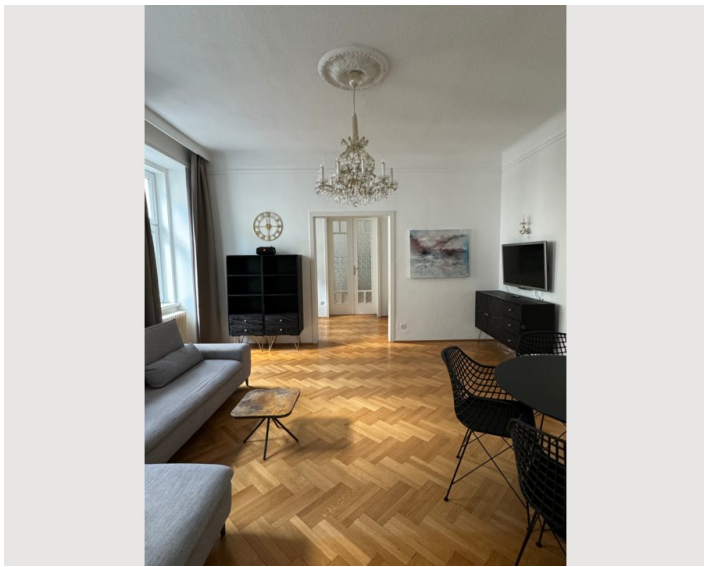
Informations

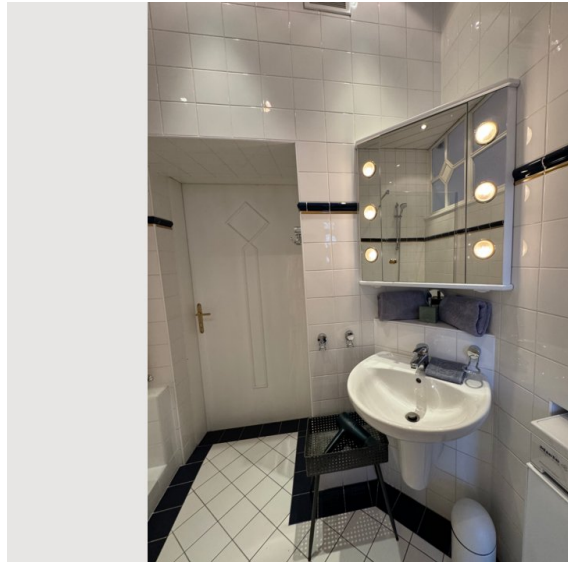
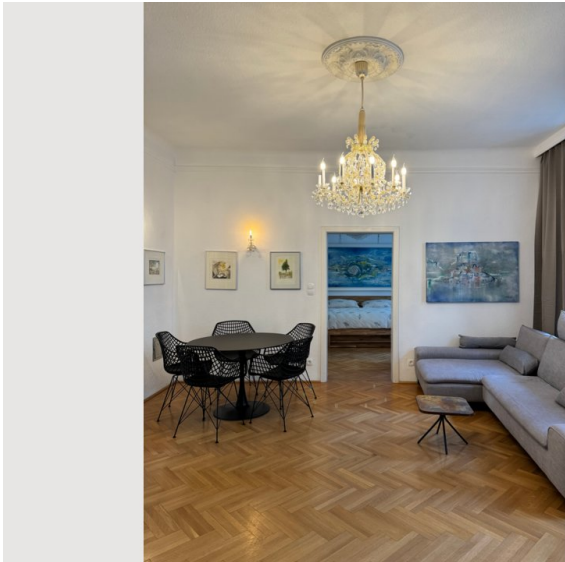
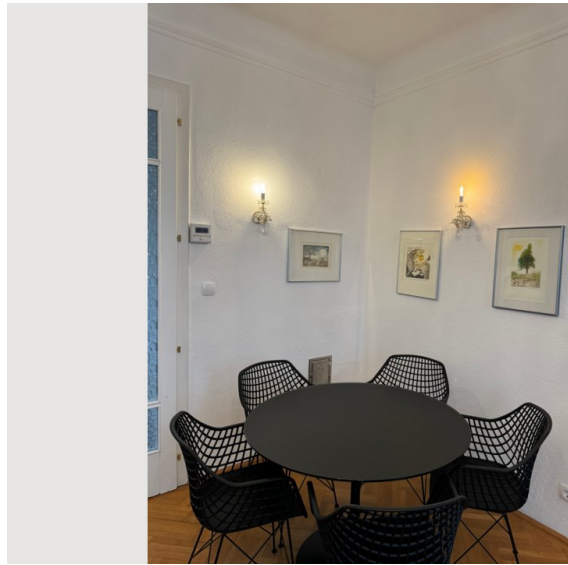
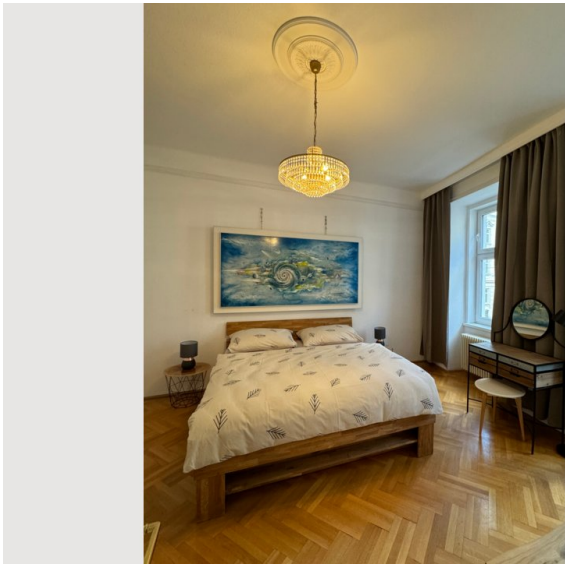
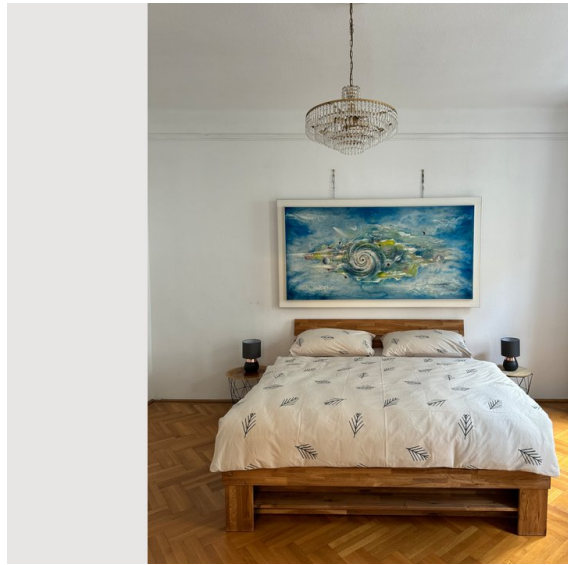
- Suitable for children
- Desk/Workplace
- Smoking not allowed
- Pets forbidden

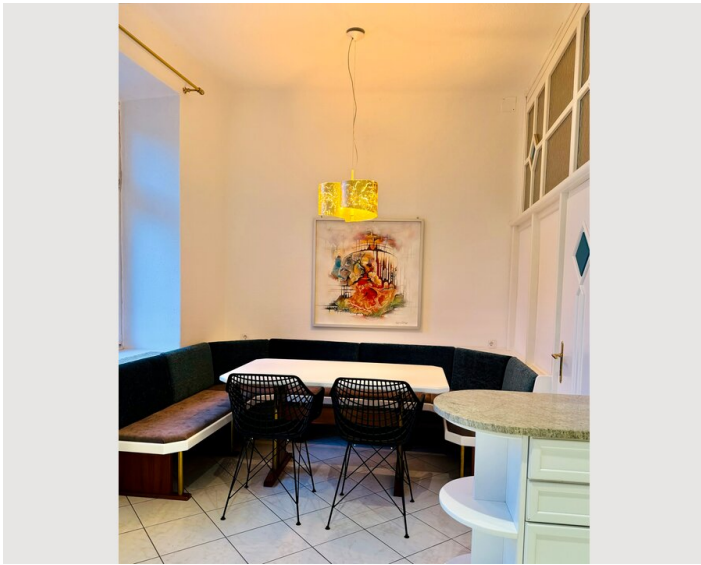
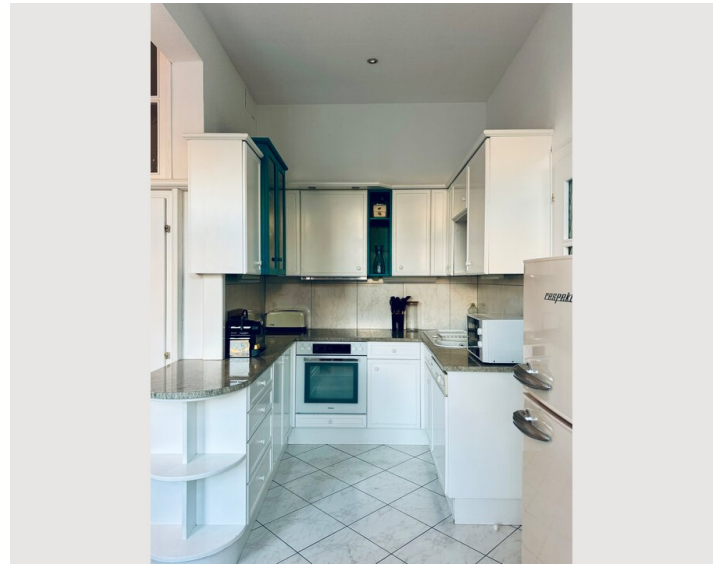
Picture gallery














Infrastructure

 203 m Fussweg

 224m Fussweg

 228m Fussweg

Atelier Lomani is addressed in Staudgasse 46 in the 18. district of Vienna. We are a 6 minute walk from the Metro station Michlbeuern-AKH (U6) & 1-6 minutes away from the trams (number 40-42).

By tram in 15 minutes to the inner city of Vienna (Schottentor / Votivkirche):

- corner Hildebrandgasse / Kreuzgasse - line 42 (100m - 1 minute walk)
- corner Währingerstrasse/Martinstrasse - line 40/41 (4-5 minutes walk)

There is a tobacco shop in a 160m walk, the next pharmacy in a 297m walk.

Location

