



STUDIO APARTMENT, VIENNA

Cozy small apartment near main railway station T1

Object number: VSSM1

[View and rent online](#)

Cozy small apartment with mini kitchen and bathroom with toilet and washing machine. 2 min to the subway, tram and all shops, 10 min to the main train station.

Period	16/01/ - 16/02/2025
Number of persons	2
Total incl. VAT.	€ 1.272,78
Security deposit	€ 1.000,00



Living space

30m²



Maximum occupancy

2 Persons



Complete accommodation [?]

1 private bathroom 1 Living-Sleepingroom



1. floor



Check-in

15:00 - 21:00 Clock



Check-out

08:00 - 12:00 Clock

Sleeping options

Living and sleeping



1x Double bed (1,60 m x 2 m)

Descripton of accommodation

Quiet, cozy apartment on the first floor of a beautiful, very quiet old building with a courtyard that also serves as a "smoking room"; the bike room is also located here;
living-bedroom-dining room with a table that is also suitable for working; TV and Internet;
a couch that can also be used as a sofa bed in case of emergency; a small vestibule, a mini kitchen with electric plates, fridge, coffee maker and kettle.
next to it a bathroom with shower, toilet and washing machine

Equipment features



Basic equipment

- Internet/Wifi
- Private washing machine
- Towels
- Vacuum cleaner
- Cleaning utensils
- TV
- Bedclothes
- Private toilet
- Iron & ironing board
- Hairdryer



First supply

- Toilet paper
- Soap
- shampoo
- Nespresso capsules



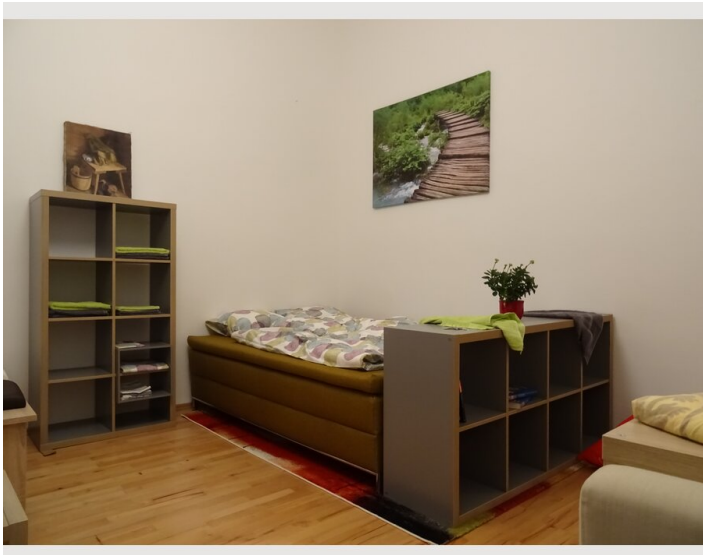
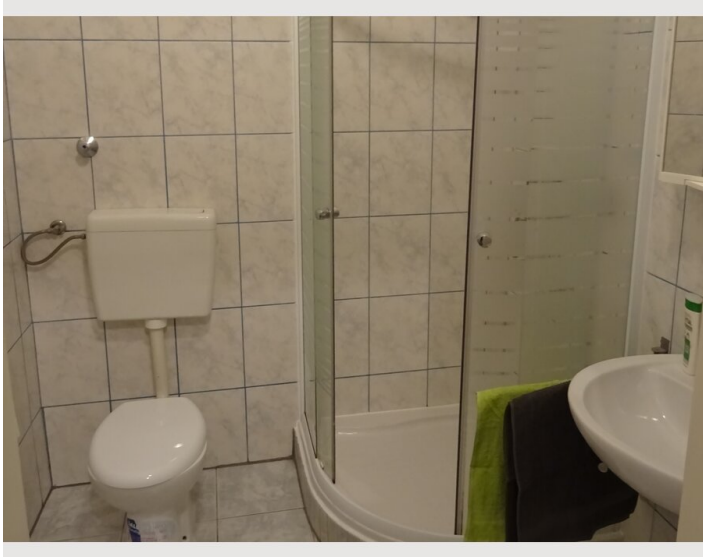
Kitchen

- Kitchenette
- Glasses/Tableware
- Cooking utensils
- Espresso machine

Informations


- Smoking not allowed
- Desk/Workplace
- Pets forbidden
- Short-term parking zone subject to a charge
- Private entrance
- Bicycle room free of charge

Picture gallery



Infrastructure

 10 min by foot

 2 min, in a walking zone

Nearby there is a pedestrian street with several supermarkets, drugstores, restaurants and fast foods, a metro station, a large market and a farmer's market every morning. There is also a tram and bus stop in the immediate vicinity

Location

