



3 ROOM APARTMENT, VIENNA

## Schönbrunn Apartment

Object number: QCFW1

[View and rent online](#)

|                          |                     |
|--------------------------|---------------------|
| <b>Period</b>            | 19/01/ - 19/02/2025 |
| <b>Number of persons</b> | 2                   |
| <b>Total incl. VAT.</b>  | € 2.718,48          |
| Security deposit         | € 1.900,00          |

Spacious and NEWly equipped apartment near Schönbrunn, including bathroom with bathtub and fully equipped kitchen



### Living space

90m<sup>2</sup>



### Maximum occupancy

5 Persons



### Complete accommodation <sup>?</sup>

1 private bathroom 1 Living-Sleepingroom



### 2. floor



### Check-in

13:00 - 19:00 Clock



### Check-out

09:00 - 14:00 Clock

## Sleeping options

### Living and sleeping



1x Children/baby bed



1x Sofa bed (1 person)



2x Sofa bed (2 persons)

## Description of accommodation

The apartment is located in a side street in a quiet location where you can see the greenery from the courtyard side and there is a garden area. The apartment is super bright and modernly furnished with a wardrobe, bed, sofa, dining room, kitchen, single bed with pull-out function.

In a central location you can reach the subway in just 5 minutes on foot + taxi rank and shops such as groceries etc.

### Equipment features



#### Basic equipment

- Garden sharing
- TV
- Bedclothes
- Private toilet
- Internet/Wifi
- Private washing machine
- Towels
- Hairdryer



#### First supply

- Toilet paper
- Nespresso capsules
- Soap



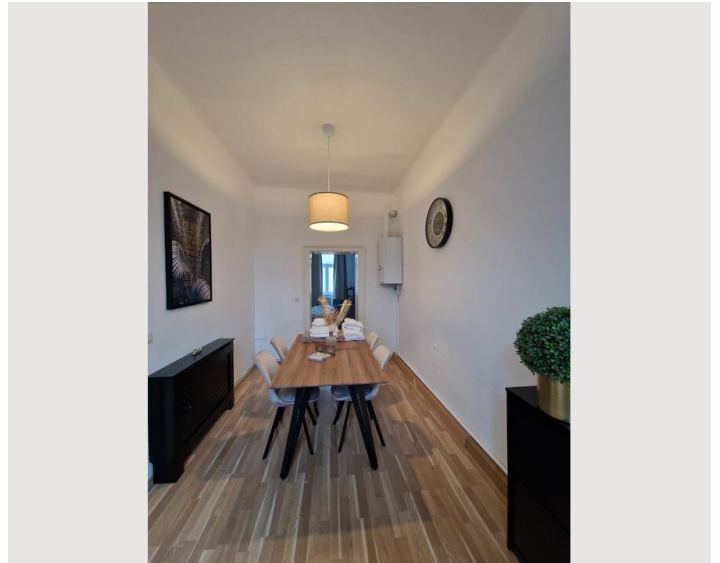
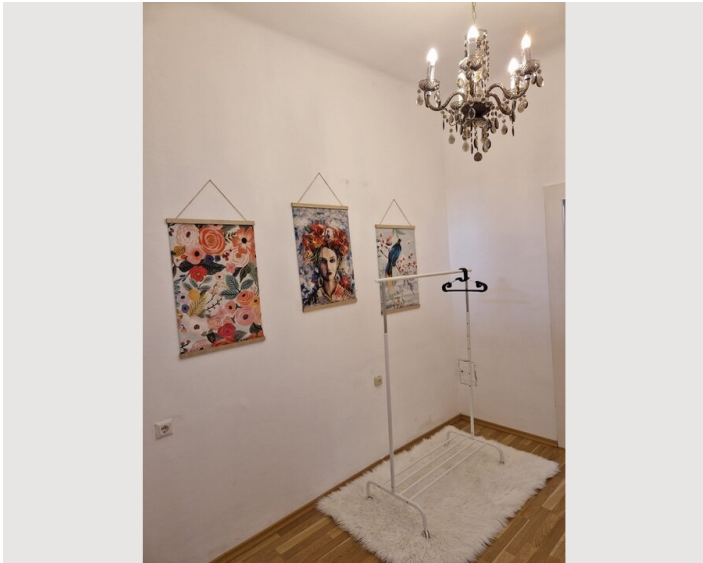
#### Kitchen

- Private kitchen
- Glasses/Tableware
- Dishwasher
- Cooking utensils
- Espresso machine


## Informations

- Suitable for children
- Short-term parking zone subject to a charge
- Pets forbidden
- Smoking not allowed
- Private entrance
- Regular cleaning at extra cost


## Picture gallery



## Infrastructure

 5 minutes walk

Metro station - 5 Minutes walk

 5 minutes walk

The apartment is in a beautiful location with a view of Gloriette. In the immediate vicinity is the palace park of Schönbrunn Palace, which invites you to run or take a walk or just for a short, quiet break in the green under the chestnut trees. Within a 10-minute walk there are numerous shops such as a pharmacy, doctors, post office, bank or restaurants.

## Location

