



2 ZIMMER WOHNUNG, LINZ

Stylish apartment in central location - Linz Urfahr

Object number: OQRV1

[View and rent online](#)

Welcome to your new home in Linz!

Period	19/01/ - 19/02/2025
Number of persons	2
Total incl. VAT.	€ 2.228,04
Security deposit	€ 1.600,00



Living space

56m²



Maximum occupancy

2 Persons



Complete accommodation [?]

1 private bathroom 1 Living-Sleepingroom



4. floor

Elevator available



Check-in

14:00 - 20:00 Clock



Check-out

09:00 - 11:00 Clock

Sleeping options

Living and sleeping



1x Double bed (1,40 m x 2 m)

Descripton of accommodation

A stylishly furnished apartment awaits you in a unique location in Urfahr. High, bright rooms invite you to linger.

Equipment features



Basic equipment

- Garden sharing
- TV
- Bedclothes
- Private toilet
- Aircondition
- Iron & ironing board
- Hairdryer
- Internet/Wifi
- Private washing machine
- Towels
- Garage
- Vacuum cleaner
- Cleaning utensils



First supply

- Toilet paper
- Soap
- Fridge filling on request
- shampoo
- Nespresso capsules



Kitchen

- Private kitchen
- Glasses/Tableware
- Dishwasher
- Cooking utensils
- Espresso machine

Informations

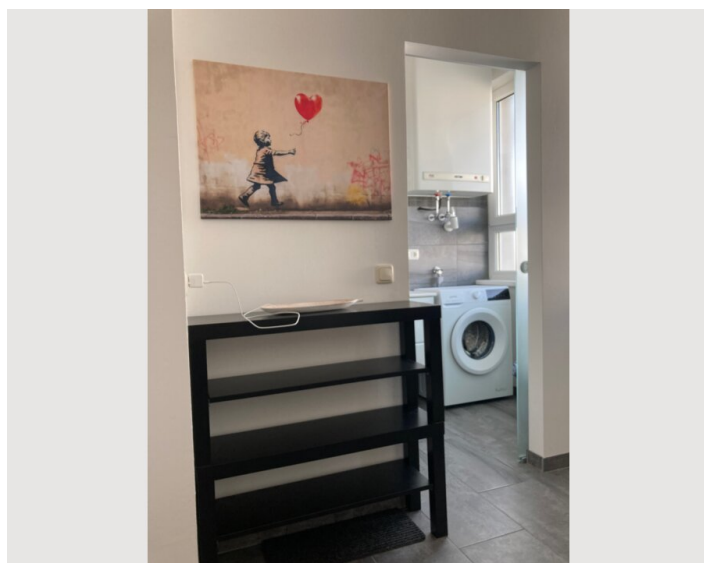
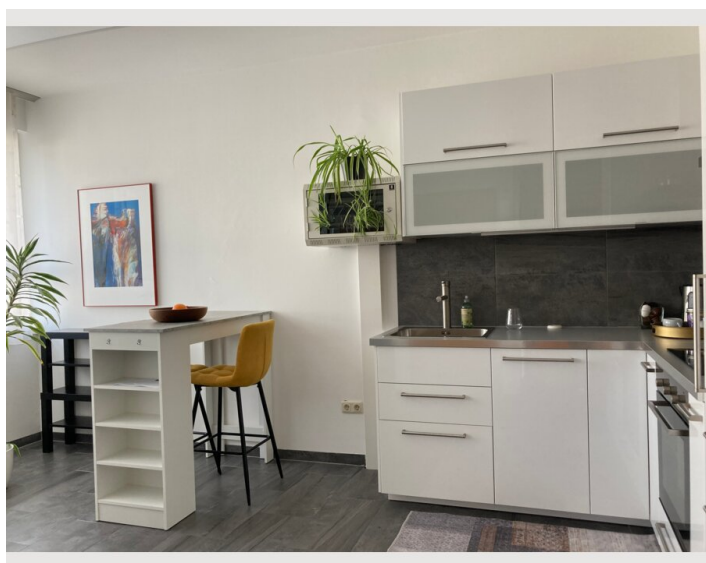
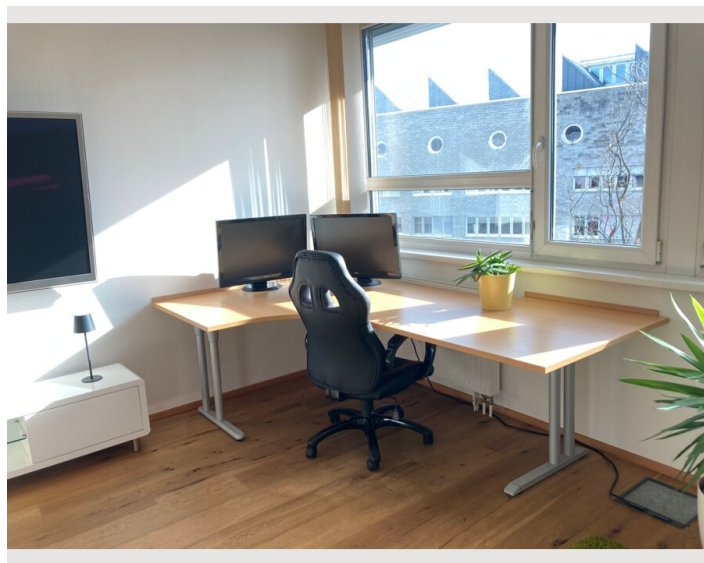
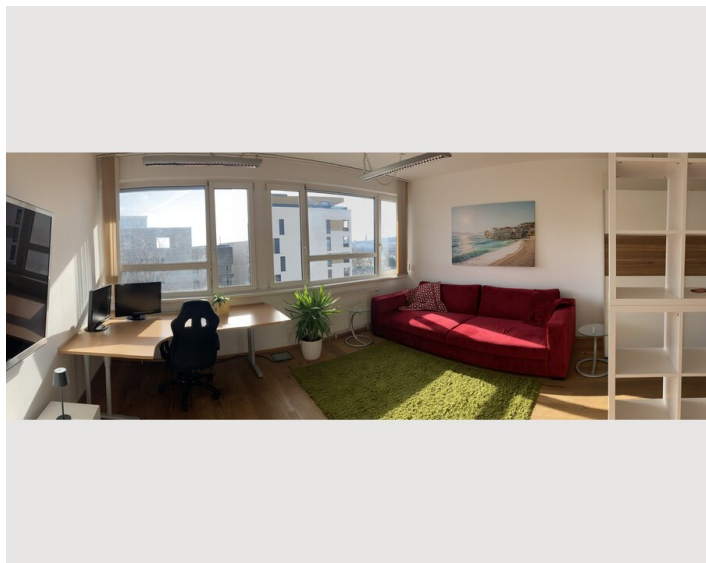
- Suitable for children
- Free short-term parking zone
- Private entrance
- Regular cleaning at extra cost
- Smoking not allowed
- Desk/Workplace
- Pets forbidden
- Bicycle room free of charge

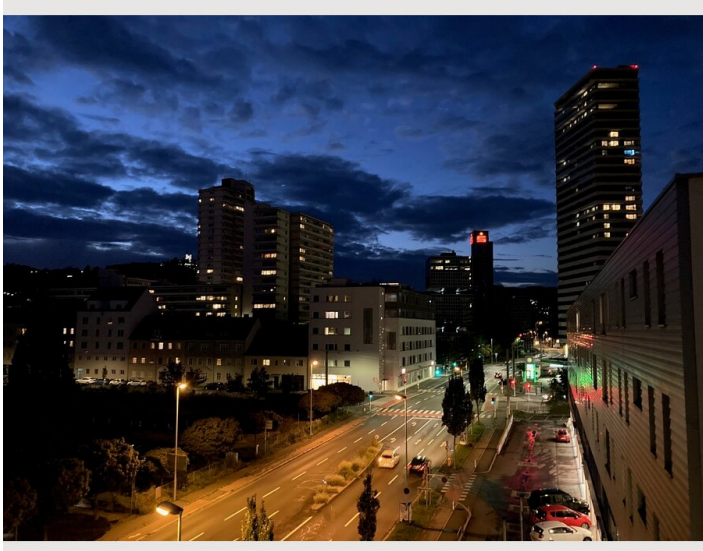
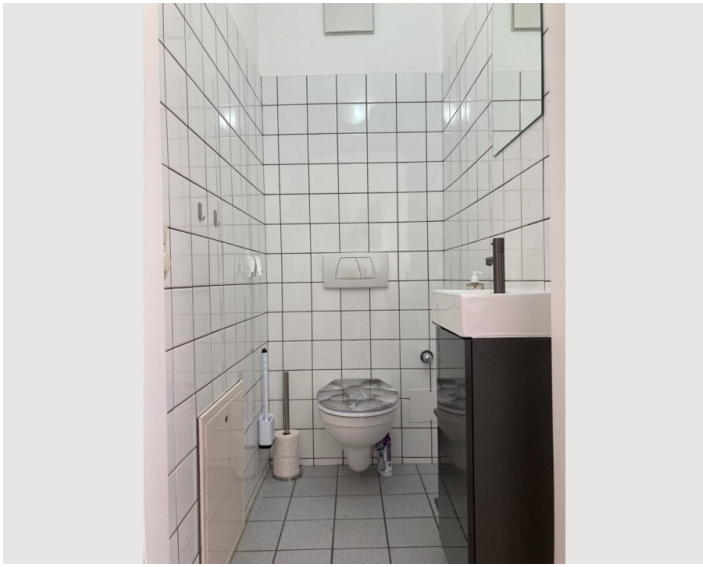
Additional services

- Underground parking space (women's parking space) (€ 180,00)
- DEPOSIT Hand-held transmitter Underground parking space (€ 80,00)


All prices are gross per month - billing is done directly with the lessor.


Picture gallery








Infrastructure

 Tram stop right outside the front door

 on foot in 2 minutes (150 m)

 by tram in about 10 minutes

 approx. 13.5 km, by car approx. 21 minutes

 2 tram stops or on foot in about 12 minutes

On foot:

in about 2 minutes on the Danube

in about 12 minutes at the main square

in approx. 6 minutes Lentia City (Shopping Mall)

in about 12 minutes to Ars Electronica

Restaurants in the immediate vicinity

Johannes Kepler University Linz – JKU approx. 14 minutes by tram, 4.3 km or by car approx. 10 minutes

Location

