



2 ZIMMER WOHNUNG, WALS-VIEHHAUSEN

Fully furnished 2-room attic flat with large terrace in Wals-Viehhausen for interim rent

Object number: HVFN1

[View and rent online](#)

A new, spacious and light-flooded top floor flat awaits you. Arrive and feel at home. Enjoy the fantastic view (west-south) to the Predigtstuhl and Hohem Staufen.

| | |
|--------------------------|---------------------|
| Period | 16/01/ - 16/02/2025 |
| Number of persons | 2 |
| Total incl. VAT. | € 2.088,28 |
| Security deposit | € 1.500,00 |



Living space

80m²



Maximum occupancy

3 Persons



Complete accommodation [?]

1 private bathroom 1 Separated bedroom 1 Living-Sleepingroom



2. floor

Elevator available



Check-in

14:00 - 20:00 Clock



Check-out

08:00 - 12:00 Clock

Sleeping options

Sleeping room



1x Double bed (1,80 m x 2 m)

Living and sleeping



1x Sofa bed (1 person)

Descripton of accommodation

This very sunny two-bedroom, ground-floor flat with a large terrace (13 sqm) and lift is located on the 2nd floor (top floor) in a block of flats (8 units in total) completed two years ago in a quiet location with a fantastic view of the mountains. A high-quality and tastefully furnished flat with underfloor heating awaits you. From the entrance area (with wardrobe) you have direct access to all other rooms: 1 storage room with washing machine and tumble dryer as well as its own hot water boiler; the bathroom with shower, WC and washbasin; a spacious bedroom with sliding door wardrobe and TV; a bright living/dining room with well-equipped integrated kitchen (dishwasher, oven, hob with ceramic hob, kettle, cookware and crockery, glasses, egg cooker, toaster, older model Thermomix). The dining table seats 4 people comfortably. There is also a sofa bed in the living room. On the large terrace of approx. 13 square metres (facing west and south) you can enjoy the mountain panorama and wonderful sunsets. Three parasols offer sufficient protection from the sun. The accommodation can be entered without a single threshold and is therefore completely barrier-free.

Equipment features



Basic equipment

- Roof-terrace
- Music system/docking station
- Private washing machine
- Bedclothes
- Private toilet
- Vacuum cleaner
- Cleaning utensils
- Internet/Wifi
- TV
- Private dryer
- Towels
- On the road without time limit without any cost
- Iron & ironing board
- Hairdryer



Fireplace

- Gas grill



First supply

- Toilet paper
- Soap
- shampoo



Kitchen

- Private kitchen
- Glasses/Tableware
- Filter coffee
- Thermomix
- Cooking utensils
- Espresso machine
- Dishwasher

Informations

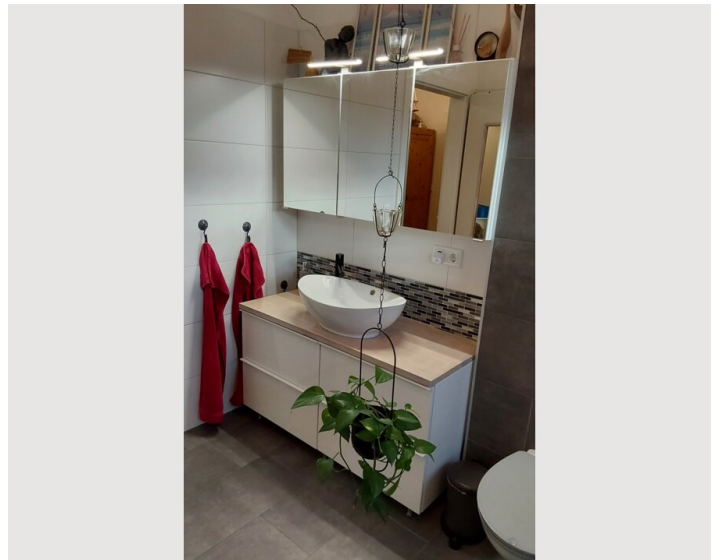
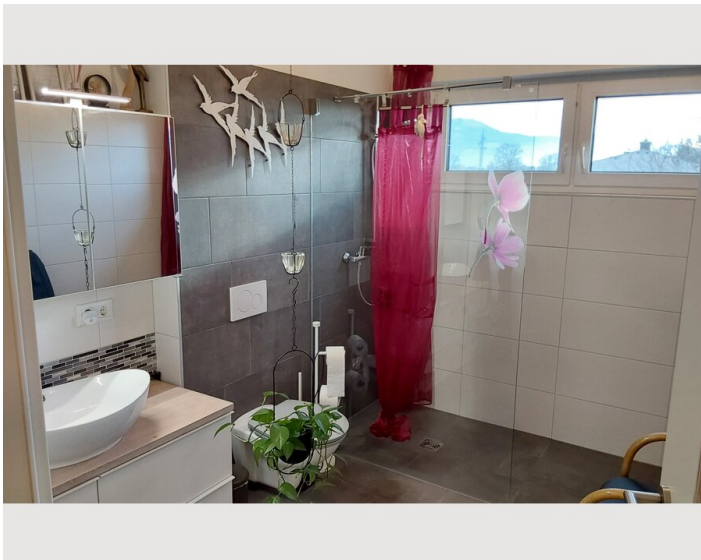
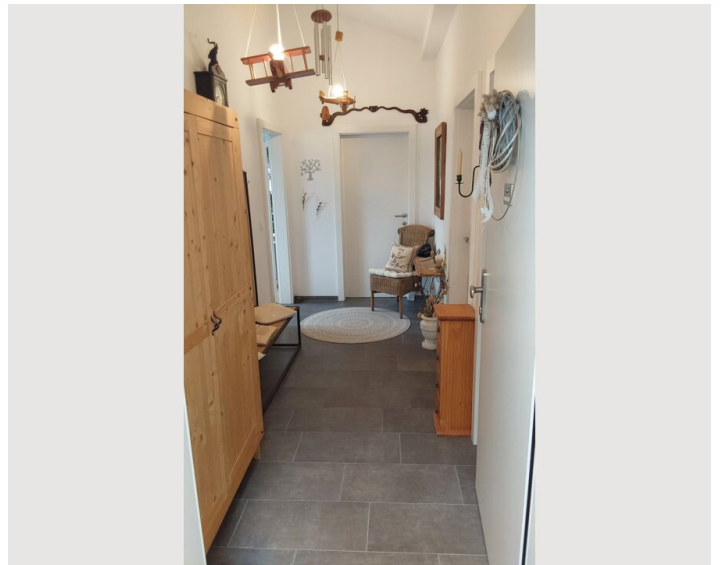
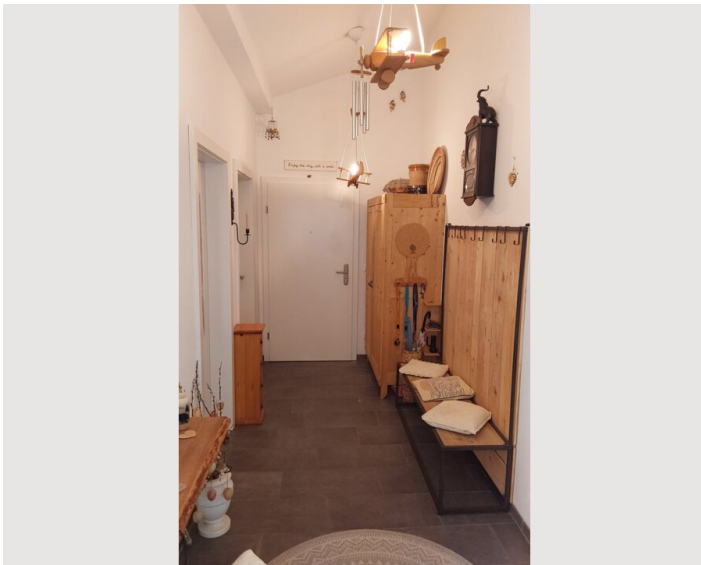
- Smoking not allowed
- Private entrance
- Regular cleaning at extra cost
- Desk/Workplace
- Pets forbidden
- Bicycle room free of charge

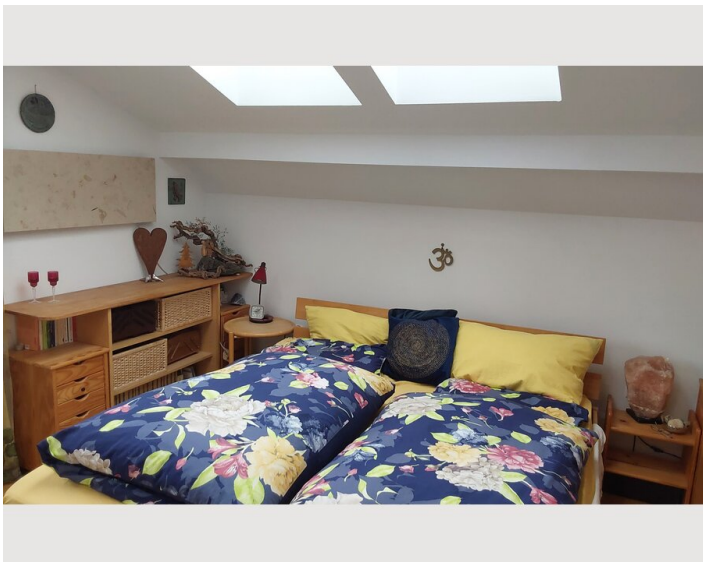
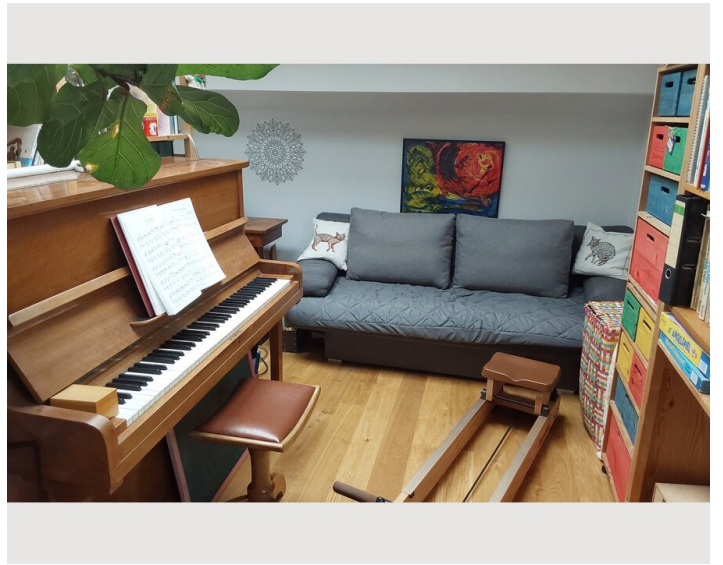
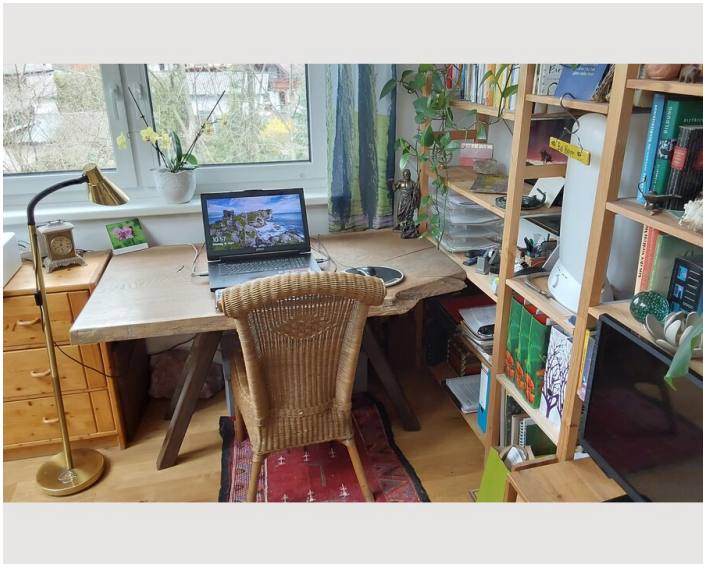
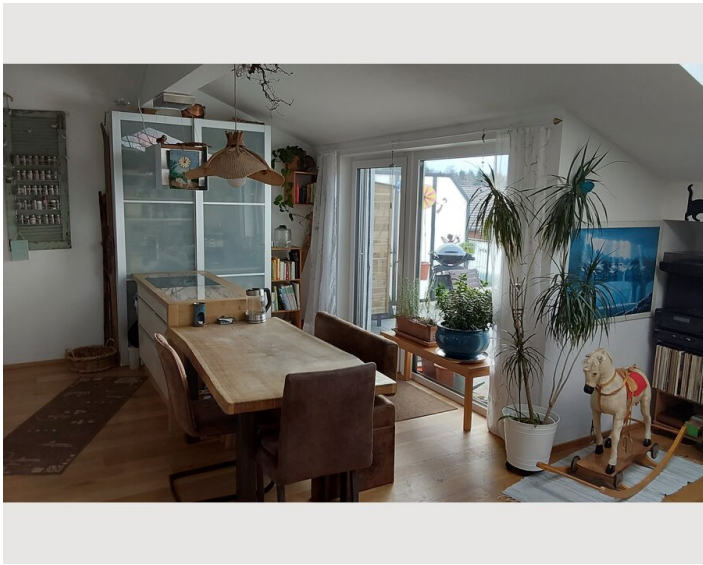
Additional services

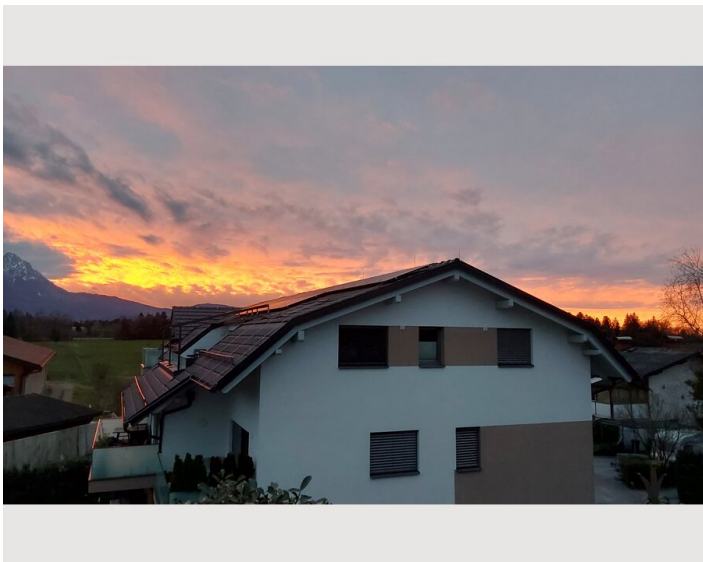
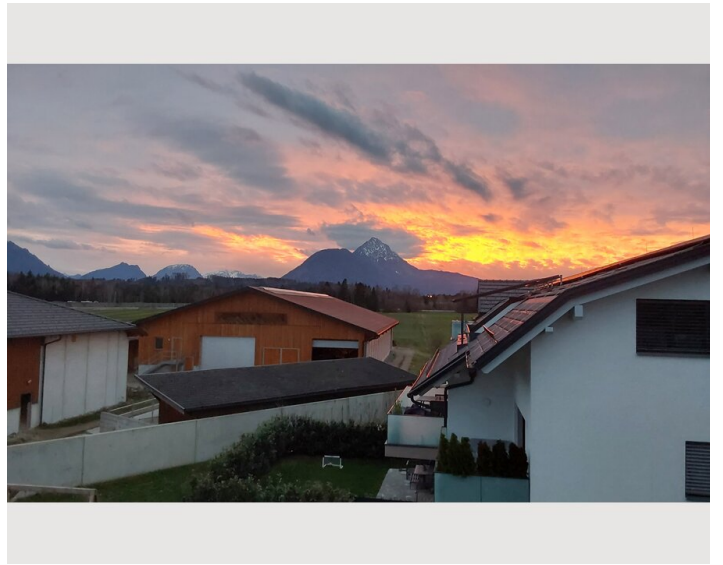
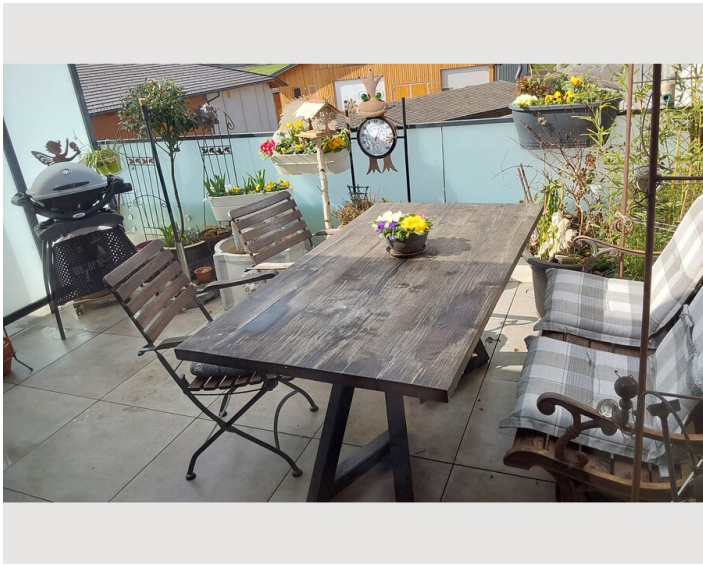
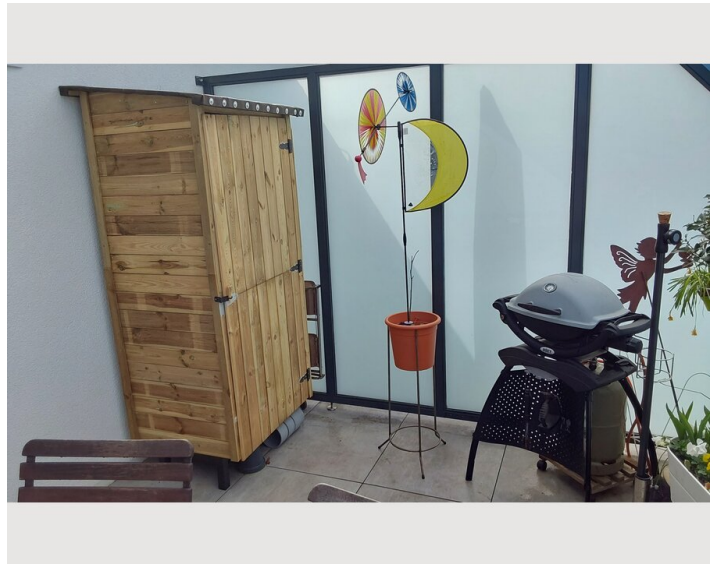
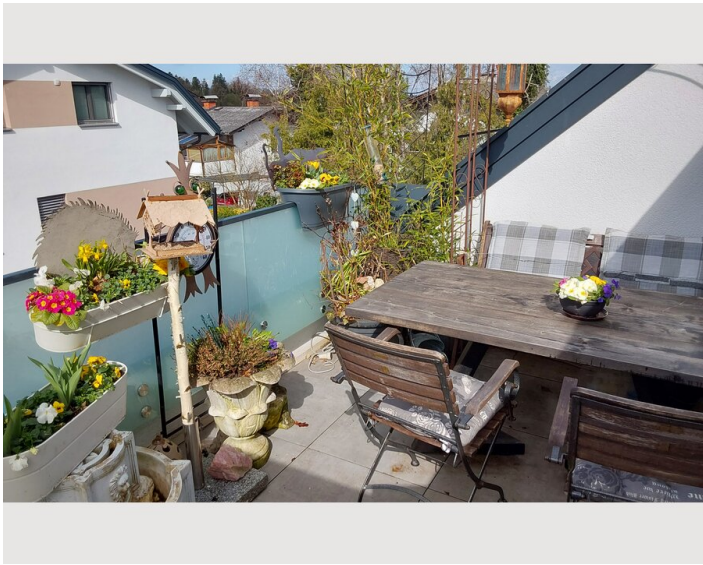
- 3 parasols for the roof terrace (€ 0,00)
- Sun lounger with cushion (€ 0,00)
- Blackout blinds for roof windows (€ 0,00)

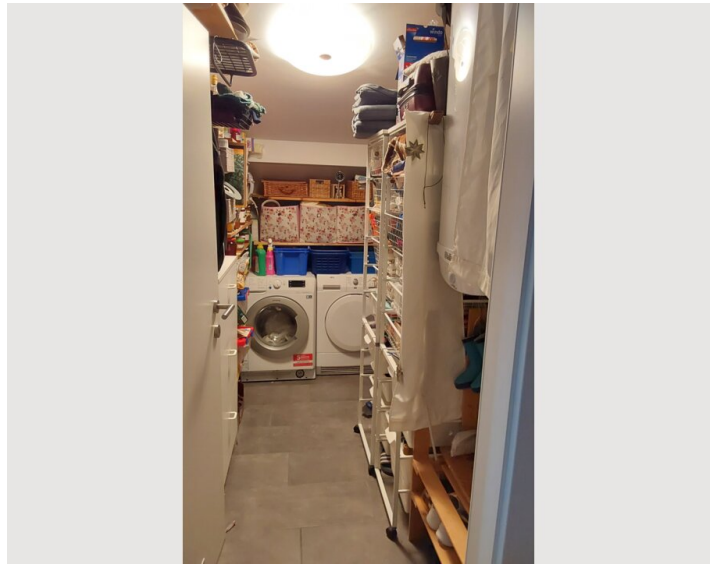
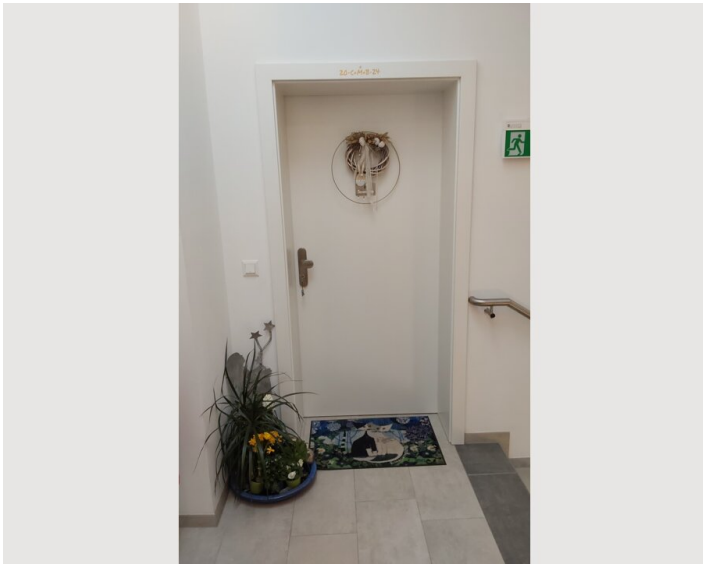
All prices are gross per month - billing is done directly with the lessor.

Picture gallery









abw **Abfahrtszeiten**
Haltestelle: **Schweizerriedung** 27


← Fahrtrichtung →


| Stk | Montag - Freitag | | Samstag | | Sonntag - Feiertag | |
|-----|------------------|------------------|---------|---------|--------------------|---------|
| | Minuten | Minuten | Minuten | Minuten | Minuten | Minuten |
| 5 | 21h | | 50h | | | |
| 6 | 01 | 16 31 46 | 16h | 36h 56h | 21h | 51h |
| 7 | 01 | 06h 11h 16 31 46 | 16h | 36h 56h | 21h | 51h |
| 8 | 01 | 16 31 46 | 16h | 36h 56h | 21h | 51h |
| 9 | 01 | 16 31 46 | 16h | 36h 56h | 21h | 51h |
| 10 | 01 | 16 31 46 | 16h | 36h 56h | 21h | 51h |
| 11 | 01 | 16 31 46 | 16h | 36h 56h | 21h | 51h |
| 12 | 01 | 16 31 46 | 16h | 36h 56h | 21h | 51h |
| 13 | 01 | 16 31 46 | 16h | 36h 56h | 21h | 51h |
| 14 | 01 | 16 31 46 | 16h | 36h 56h | 21h | 51h |
| 15 | 01 | 16 31 46 | 16h | 36h 56h | 21h | 51h |
| 16 | 01 | 16 31 46 | 16h | 36h 56h | 21h | 51h |
| 17 | 01 | 16 31 46 | 16h | 36h 56h | 21h | 51h |
| 18 | 01 | 16 31 46 | 16h | 36h 56h | 21h | 51h |
| 19 | 01 | 21 41 | 16h | 51h | 21h | 51h |
| 20 | 01 | 21 51h | 21h | 51h | 21h | 51h |
| 21 | 21h | 51h | 21h | 51h | 21h | 51h |
| 22 | 21h | 51h | 21h | 51h | 21h | 51h |
| 23 | 16h | | 16h | | | |

h - Fährt bis Zentrum/Hausplatz s - Fährt nur an Schuttlagen


Abw - Seilbahn Verkehrsbetriebe GmbH, Altmühl-Wasser Nr. 6, 3000 Salzburg
© Alle Rechte vorbehalten


Infrastructure

 5 minutes on foot, line 27, stop at Jobst bakery, every 15 minutes

 Distance approx. 9 km, reachable by car in 20 minutes or by bus

 Walking distance 5 minutes

 15 minutes by car or approx. 20 minutes by bus

 Distance approx. 3.5 km reachable in 7 minutes by car

A bakery with the most important things for daily life is a 5-minute walk away. Here is also the bus stop for line 27, which takes you reliably to the city centre every 15 minutes (see photos for timetable). 50 metres from the flat is the Schaffhausen stop of the Walsie bus, which will transport you within the municipality if necessary. The ****Hotel / Restaurant Laschenskyhof is 300 metres away. In the village centre of Viehhausen, 1.6 km away, there is a hairdresser, another inn and a doctor. In the neighbourhood you will find several vegetable farmers with direct sales. In the centre of Wals (3.5 km) you will find two banks, the post office, bakers, butchers, doctors, inns, petrol station, DIY store, organic farm, church and municipal administration. The festival theatre in Salzburg is only 7 km away and can be reached by car in approx. 15 minutes.

Location

