



3 ROOM APARTMENT, 1090 VIENNA

## Bright 3 Room Apartment 90m<sup>2</sup> in a traditional building from 1903.

Object number: 213

[View and rent online](#)

<b>Period</b>	14/03/ - 14/04/2025
<b>Number of persons</b>	2
<b>Total incl. VAT.</b>	€ 2.478,71
<b>Security deposit</b>	€ 1.900,00

Bright 3 room apartment in a traditional building from 1903.



### Living space

90m<sup>2</sup>



### Maximum occupancy

6 Persons



### Complete accommodation <sup>?</sup>

1 private bathroom 1 Separated bedroom 2 Shared bedrooms



### 2. floor



### Check-in

14:00 - 23:59 Clock



### Check-out

00:01 - 11:00 Clock

## Sleeping options

### Sleeping room



1x Double bed (1,40 m x 2 m)

### Living and sleeping 1



1x Double bed (1,40 m x 2 m)



2x Single bed

### Living and sleeping 2



1x Sofa bed (2 persons)

## Descripton of accommodation

The apartment is on the 2nd floor and has one separate bedroom as well as two kind of living/bedrooms for a total of 6 people. Of course, there is also a bathroom and a toilet for private and sole use.

Since the Währinger Gürtel is one of Vienna's main traffic arteries, passing traffic causes some noise, but you benefit from great transport connections.

The apartment is completely private so you have access to all areas.

### Equipment features

#### Basic equipment

- Internet/Wifi
- Bedclothes
- Private toilet
- Iron & ironing board
- Hairdryer
- Private washing machine
- Towels
- Vacuum cleaner
- Cleaning utensils

#### First supply

- Toilet paper
- Soap
- shampoo

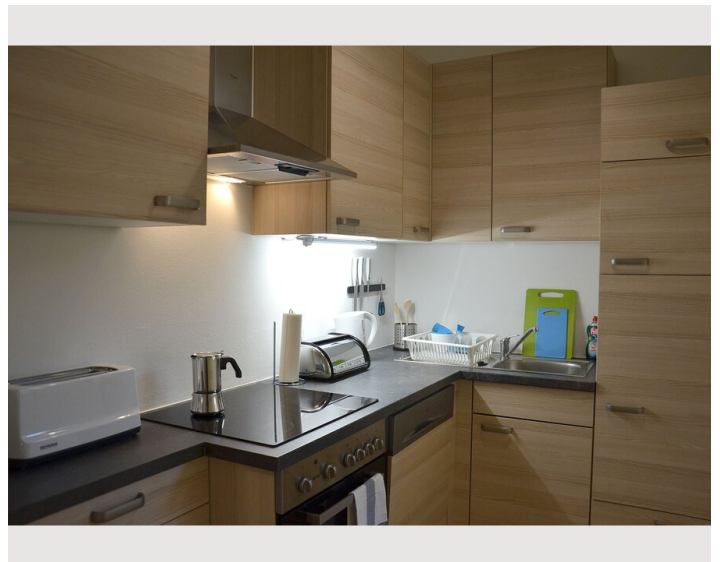
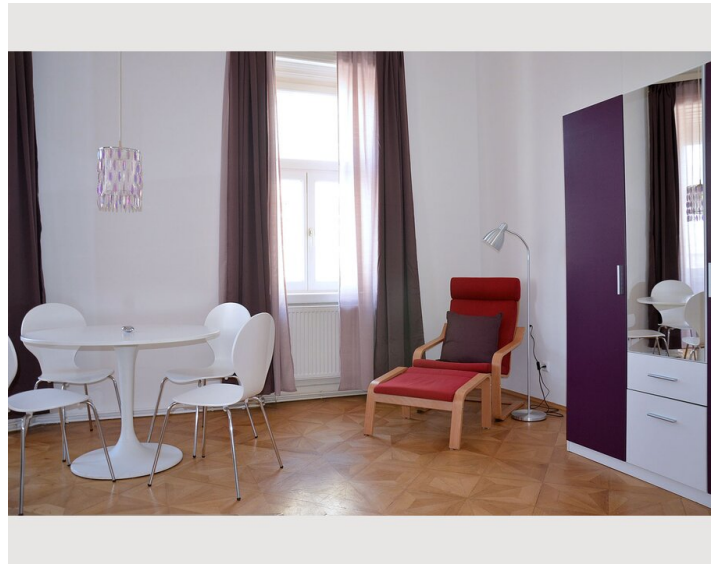
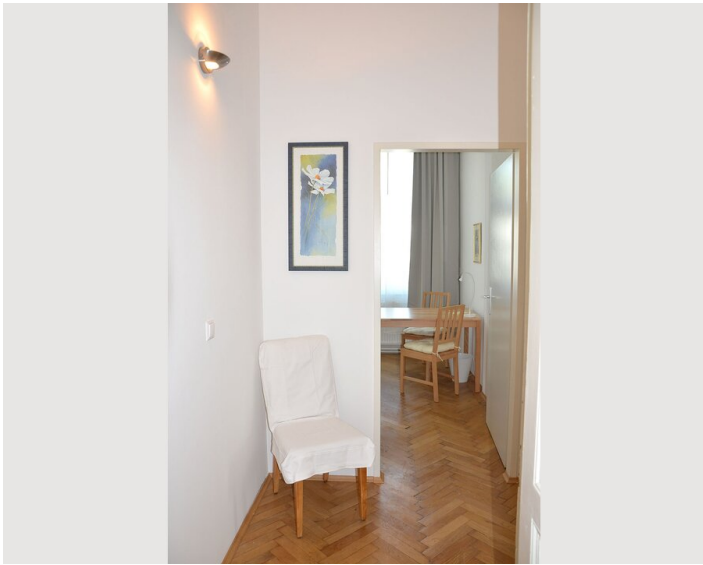
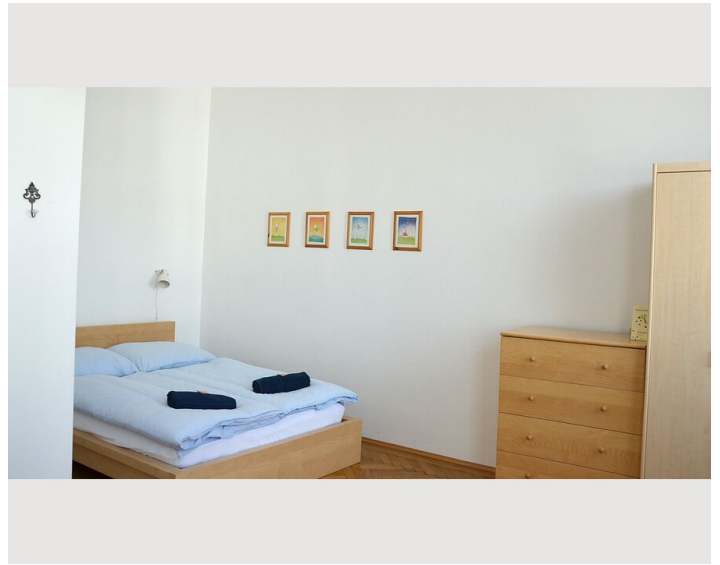
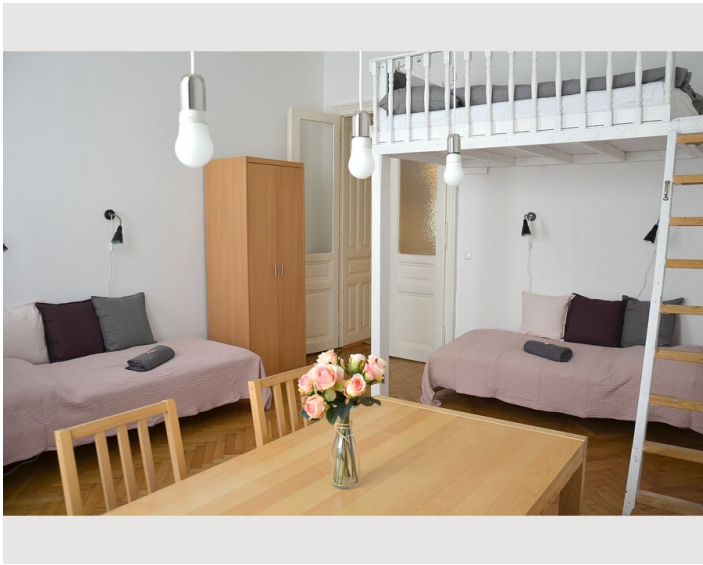
#### Kitchen

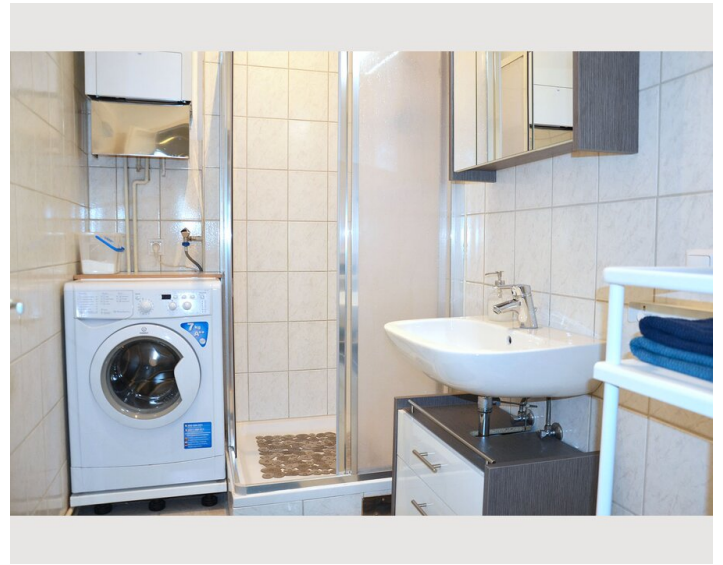
- Private kitchen
- Glasses/Tableware
- Cooking utensils
- Coffee machine

### Informations



- Suitable for children
- Short-term parking zone subject to a charge
- Pets on request
- Smoking not allowed
- Desk/Workplace
- Regular cleaning at extra cost

## Picture gallery





### Infrastructure

 Underground Line 6 and Tram 40/41/42 vis-à-vis  10min by tram

 vis-à-vis

Situated across the street is the underground (line U6) and tram station (line 40, 41 and 42), a supermarket as well as a bakery, a city-bike station is found around the corner. Cosy cafés and restaurants within walking distance and you can reach the city centre within 10 minutes.

## Location

