

2 ZIMMER WOHNUNG, VIENNA

Vienna Pool Penthouse

Object number: VPP_1

[View and rent online](#)

Beautiful apartment, 7 minutes' walk from the subway, on the top floor with south-facing terrace and far-reaching views for rent. Ideal for use as a home office. A 25 meter long pool in the extensive gardens is free to use.

Period	19/01/ - 19/02/2025
Number of persons	2
Total incl. VAT.	€ 1.988,28
Security deposit	€ 1.500,00



Living space

53m²



Maximum occupancy

2 Persons



Complete accommodation [?]

1 private bathroom 1 Separated bedroom 1 Living-Sleepingroom



6. floor

Elevator available



Check-in

08:00 - 23:00 Clock



Check-out

08:00 - 23:00 Clock

Sleeping options

Sleeping room



1x Double bed (1,40 m x 2 m)

Living and sleeping



1x Double bed (1,40 m x 2 m)

Descripton of accommodation

This quiet apartment offers a large entrance hall with cupboards and wardrobe, an eat-in kitchen and a bedroom. The apartment was completely renovated in 2022, everything is new. It is located on the 6th and top floor and offers a beautiful view of the Donaufelderkirche and the Danube Tower.

Equipment features

Basic equipment

- Roof-terrace
- Internet/Wifi
- Bedclothes
- Private toilet
- Garden sharing
- Private washing machine
- Towels
- Cleaning utensils

Fireplace

- Charcoal grill

Pool

- Outdoor Pool

First supply

- Toilet paper
- Soap

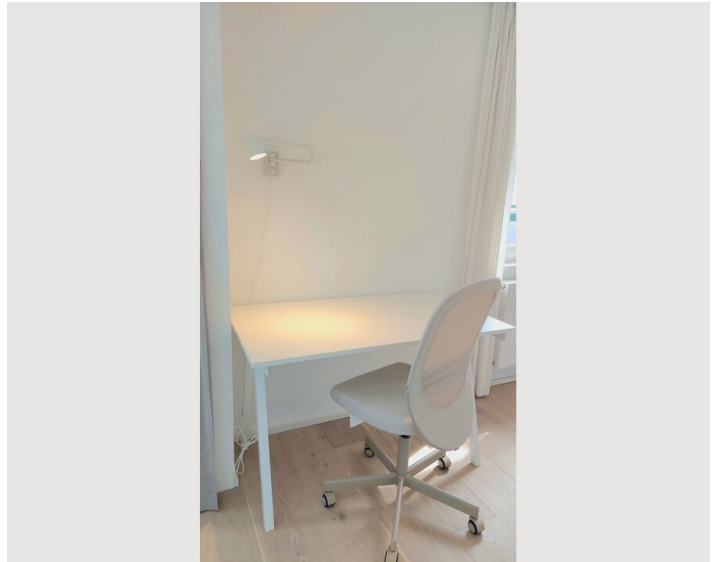
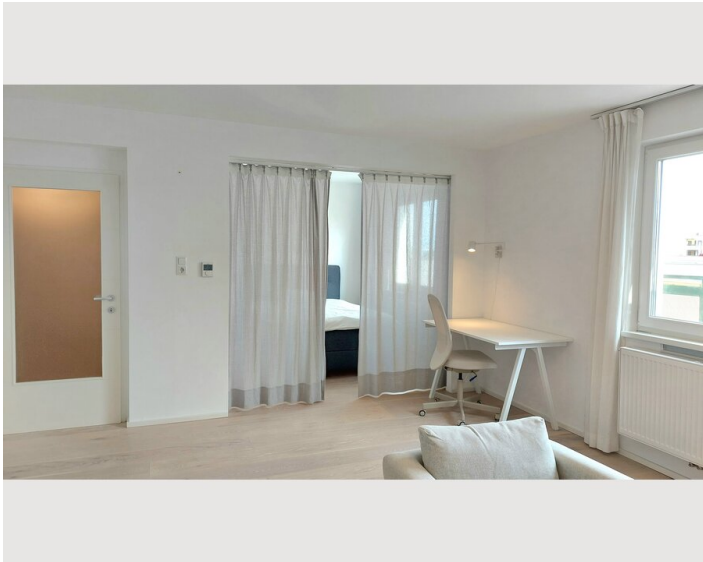
Kitchen

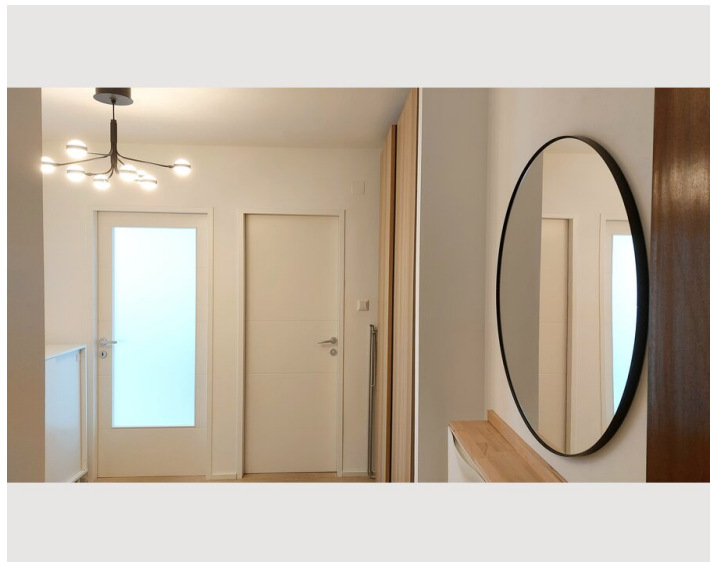
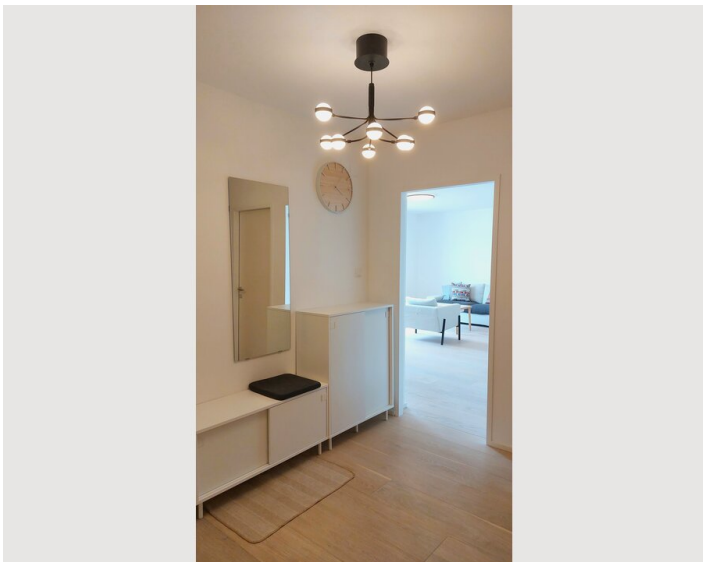
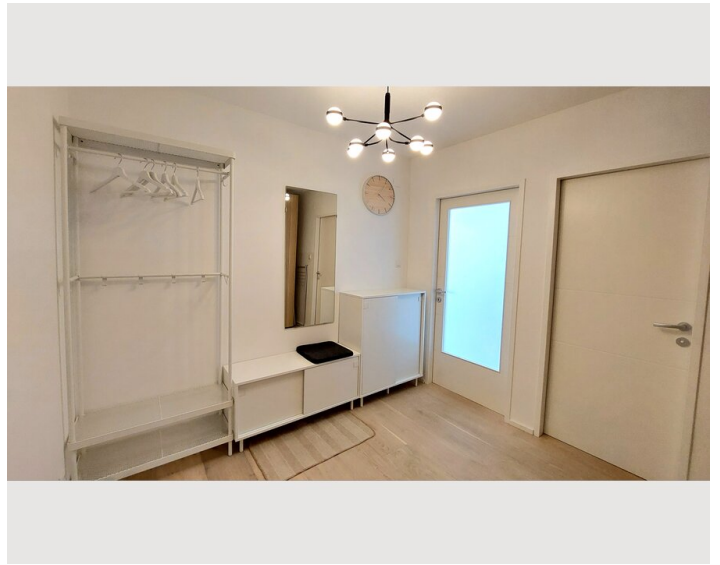
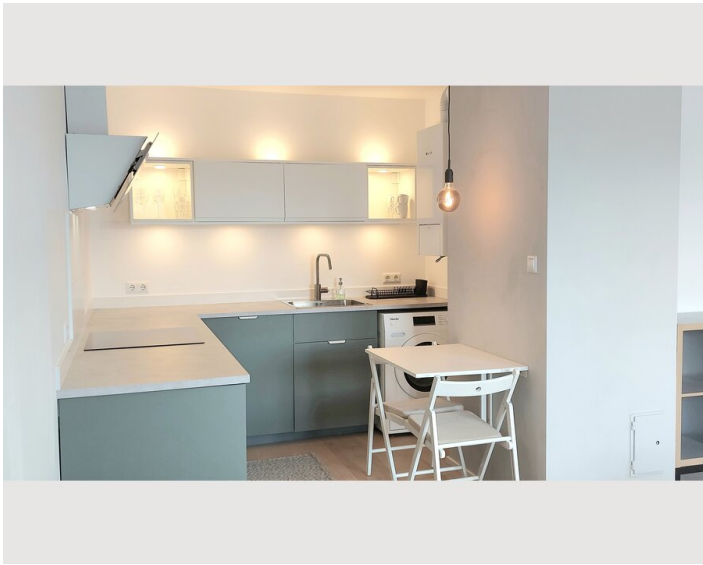
- Private kitchen
- Glasses/Tableware
- Dishwasher
- Microwave

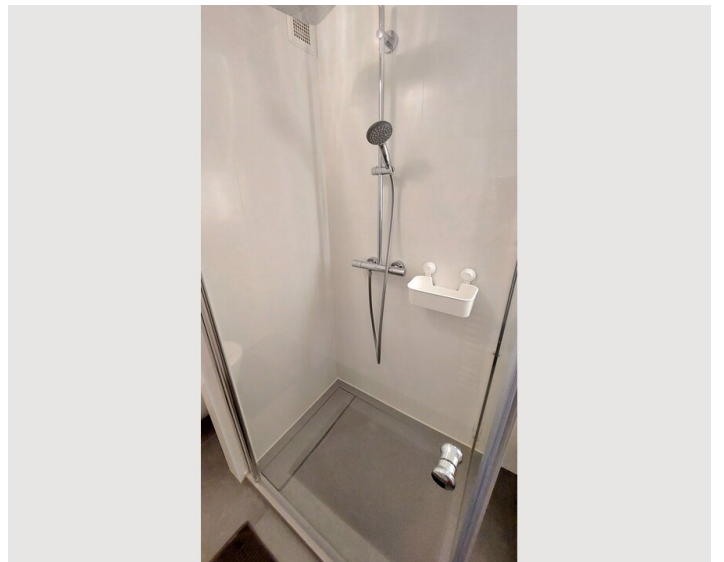
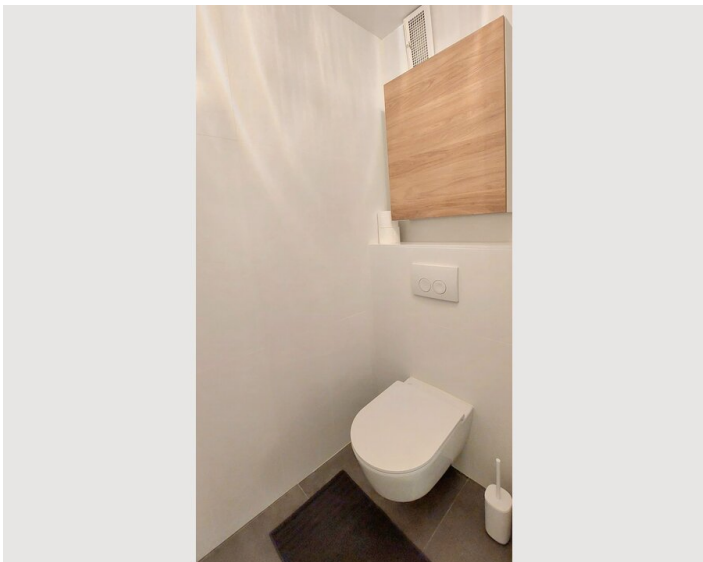
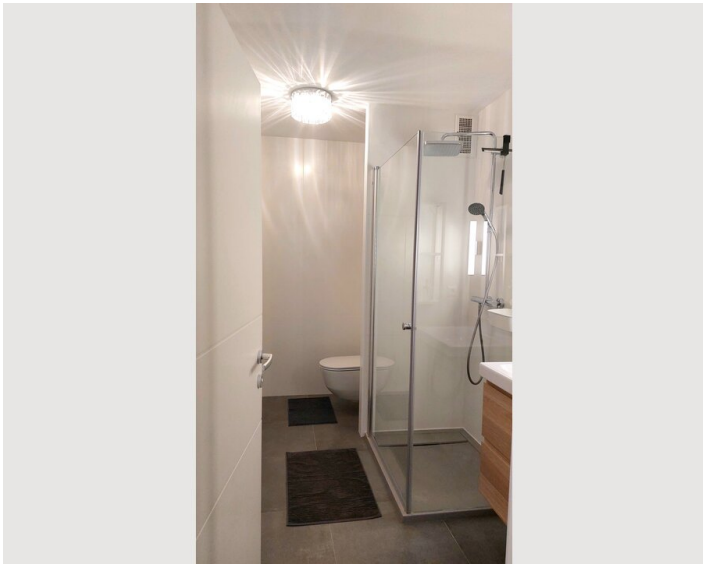
Informations

- Suitable for construction workers
- Smoking not allowed
- Desk/Workplace
- Pets forbidden
- Bicycle room free of charge
- Suitable for children
- Free short-term parking zone
- Private entrance
- Regular cleaning at extra cost


Picture gallery







Infrastructure

 Metro and train station "Floridsdorf" is just 7 minutes by feet

The apartment is located near the "Floridsdorf" train station, from where you can reach the city center in about 15 minutes. There are many shops and restaurants in the immediate vicinity of the apartment. The "Alte Donau" recreational area is just a few minutes' walk away and is ideal for swimming and walking.

Location

