



2 ZIMMER WOHNUNG, LINZ

## HONOR - Fully Equipped 2-Room Apartment in Prime Location

Object number: LECB2

[View and rent online](#)

Highlights: Short-term & flexible rental (up to 6 months, no commitment) Accommodates up to 6 people Fully furnished & equipped Internet, electricity & heating included Shared washing machine available Living space: 65 m<sup>2</sup> | Rooms: 2

<b>Period</b>	19/01/ - 19/02/2025
<b>Number of persons</b>	2
<b>Total incl. VAT.</b>	€ 2.247,10
<b>Security deposit</b>	€ 1.700,00



### Living space

65m<sup>2</sup>



### Maximum occupancy

6 Persons



### Complete accommodation

1 private bathroom 2 Separated bedrooms 1 Living-Sleepingroom



### 1. floor



### Check-in

08:00 - 16:00 Clock



### Check-out

12:00 - 16:00 Clock

## Sleeping options

### Sleeping room



1x Double bed (1,60 m x 2 m)



1x Sofa bed (2 persons)

### Living and sleeping



1x Sofa bed (2 persons)

## Descripton of accommodation

Prime Location at the Donaulände:

This charming apartment is situated in one of the most sought-after areas of the city – right at the picturesque Donaulände! Enjoy the perfect blend of urban living and relaxation by the water. Restaurants, cafés, and shopping facilities are within walking distance, and the excellent public transport connections make this location ideal for professionals, students, or travelers.

## Equipment features



### Basic equipment

- Garden sharing
  - Community washing machine
  - Private toilet
  - Internet/Wifi
  - Bedclothes
- 



### First supply

- Fridge filling on request
- 



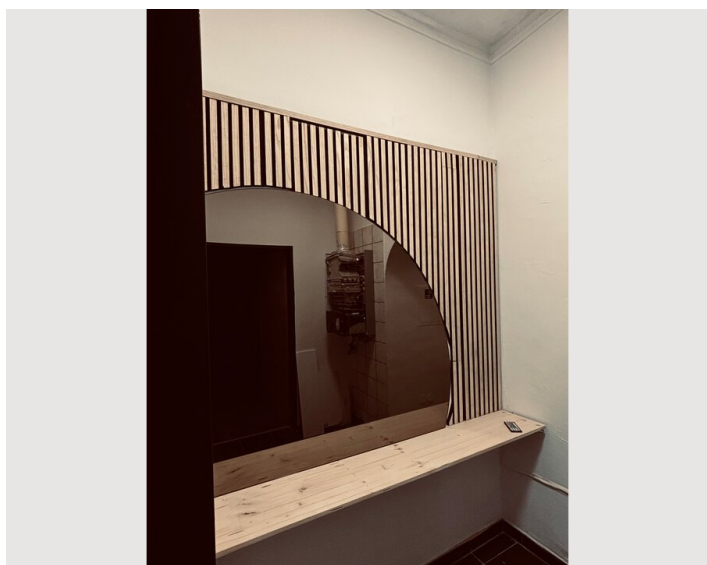
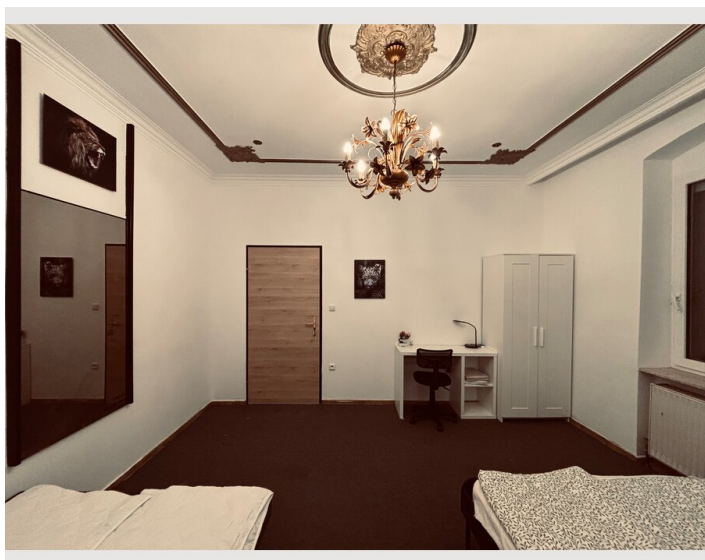
### Kitchen

- Private kitchen
- Glasses/Tableware

## Informations

- Suitable for construction workers
- Private entrance
- Regular cleaning at extra cost
- Suitable for children
- Pets on request

## Picture gallery



## Location

