



2 ZIMMER WOHNUNG, LINZ

Apartment fully equipped

Object number: CONL3

[View and rent online](#)

THE BEST ALTERNATIVE TO A HOTEL Are you looking for temporary accommodation in Linz for yourself, your employees, customers or guests that meets the highest standards in terms of facilities, location and space? That's where we-City Home Linz come in.

Period	19/01/ - 19/02/2025
Number of persons	2
Total incl. VAT.	€ 3.572,27
Security deposit	€ 2.700,00

**Living space**58m²**Maximum occupancy**

2 Persons

**Complete accommodation** 

1 private bathroom 1 Separated bedroom

**6. floor**

Elevator available

**Check-in**

10:00 - 20:00 Clock

**Check-out**

09:00 - 10:00 Clock

Sleeping options**Sleeping room**

1x Double bed (1,80 m x 2 m)



1x Sofa bed (2 persons)

Description of accommodation

Feel like home in our brand new apartment in Linz! The location couldn't be better, the furnishing hardly any more exclusive - the unique concept turns short term rental into an extraordinary experience.

The furnishing was chosen with the highest standards in mind, starting with unique pieces of furniture crafted by carpenters all the way to high tech equipment that leaves nothing to be desired.

Tenants enjoy every advantage for a pleasant and carefree stay. No matter if you're looking for an exclusive home for business or private reasons, you will feel comfortable all around.

Equipment features

Basic equipment

- Balcony
- TV
- Dryer
- Towels
- Garage
- Internet/Wifi
- Washing machine
- Bedclothes
- Private toilet

Kitchen

- Private kitchen
- Coffee machine
- Microwave
- Glasses/Tableware
- Dishwasher

Informations

- Smoking not allowed
- Pets on request
- Desk/Workplace
- Regular cleaning at extra cost

Additional services

- Garage (€ 114,00)
- weekly cleaning (€ 288,00)

All prices are gross per month - billing is done directly with the lessor.

Picture gallery



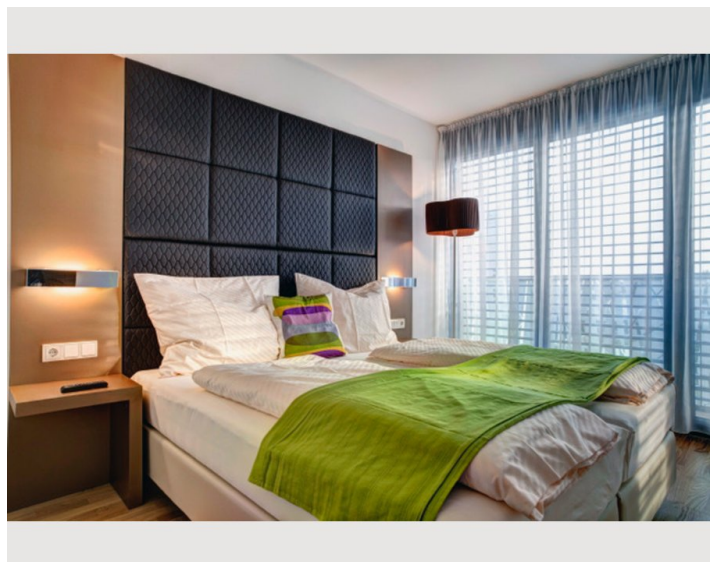
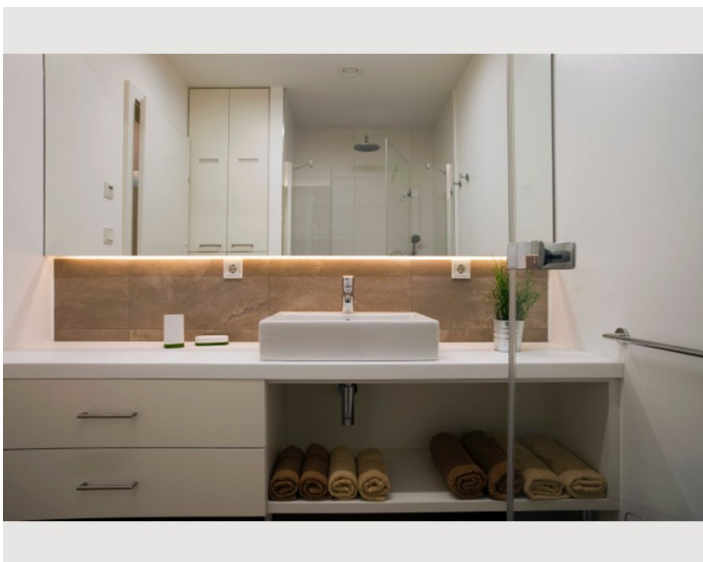
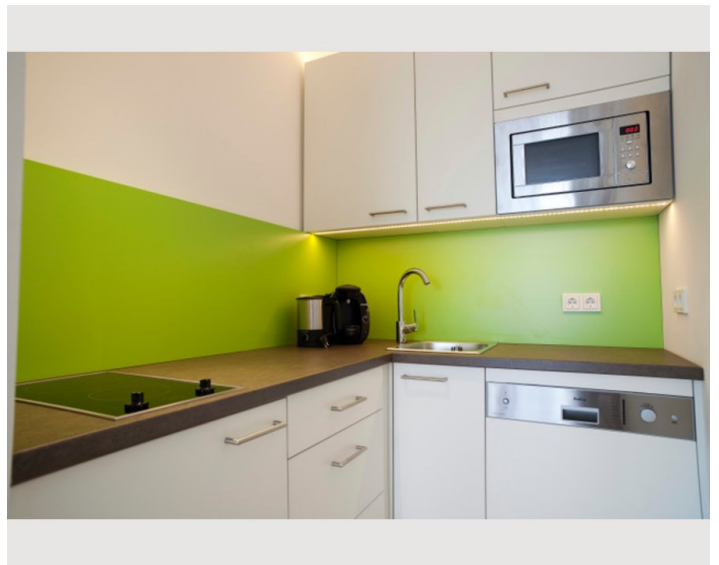
- Wohnfläche 58,1 m² mit Loggia 11,3 m²
- voll ausgestattete Küche
- mit Mikrowellenherd
- Internet / W-LAN
- 2 HD-Flat-TV
- Kabel-TV
- Waschmaschine und Trockner

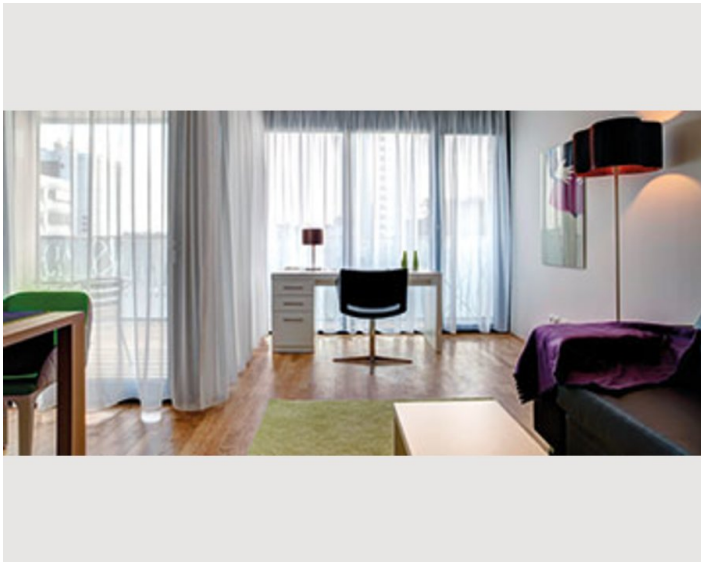
Auf Wunsch: 1 Tiefgaragenplatz

58,1 m²


(Loggia 11,3 m²)

TYP 1





Infrastructure

 A few minutes walk away

Centrally located with ideal public transport connections. The city centre of Linz can be reached on foot in just a few minutes. In the immediate vicinity of the main railway station, Wissensturm and music theatre.

On the City Home Linz website www.cityhome-linz.at you will find lots of information worth knowing about what the area has to offer, such as connection points for bus and train, grocery shops, pharmacies, cinemas, restaurants, fitness studios, etc.

Location

