



STUDIO APARTMENT, STRASS IM ATTERGAU

C1 Atelier

Object number: C1 Atelier

[View and rent online](#)

Period	16/01/ - 16/02/2025
Number of persons	2
Total incl. VAT.	€ 1.067,74
Security deposit	€ 800,00

The apartment house Sagerer is located halfway between Mondsee and Attersee, in a small quiet side valley, in the middle of nature, nestled between Auerwaldbach, meadows and the edge of the forest.



Living space

67m²



Maximum occupancy

4 Persons



Complete accommodation [?]

1 private bathroom 1 Living-Sleepingroom



3. floor



Check-in

15:00 - 20:00 Clock



Check-out

07:00 - 10:00 Clock

Sleeping options

Living and sleeping



1x Double bed (1,80 m x 2 m)



2x Single bed

Descripton of accommodation

The light-filled open apartment is located in the attic of the house on the 3rd floor and is fully furnished for you. It has a fully equipped kitchen, separate bathroom with bath and shower. There are 2 additional fun places to sleep in the attic. Kids love it!

Equipment features



Basic equipment

- Garden sharing
- TV
- Community dryer
- Towels
- Private parking space
- Hairdryer
- Internet/Wifi
- Community washing machine
- Bedclothes
- Private toilet
- Vacuum cleaner



Fireplace

- Charcoal grill



First supply

- Toilet paper
- Soap



Kitchen

- Private kitchen
- Glasses/Tableware
- Dishwasher
- Cooking utensils
- Filter coffee
- Microwave

Informations

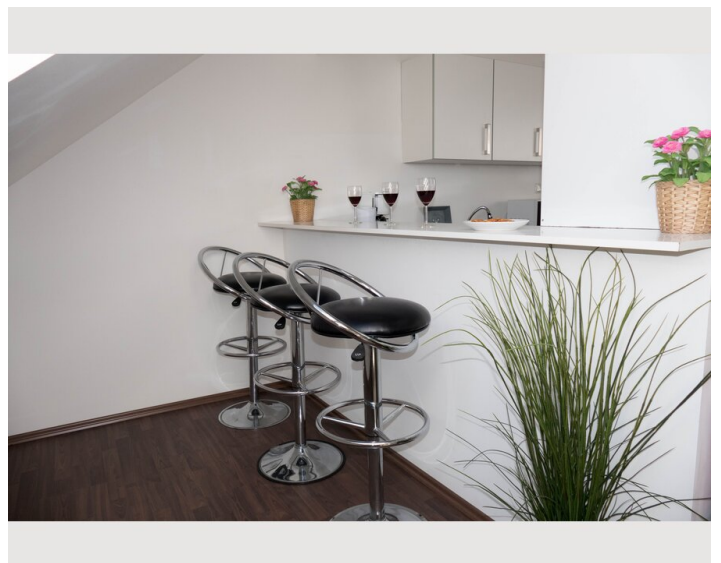
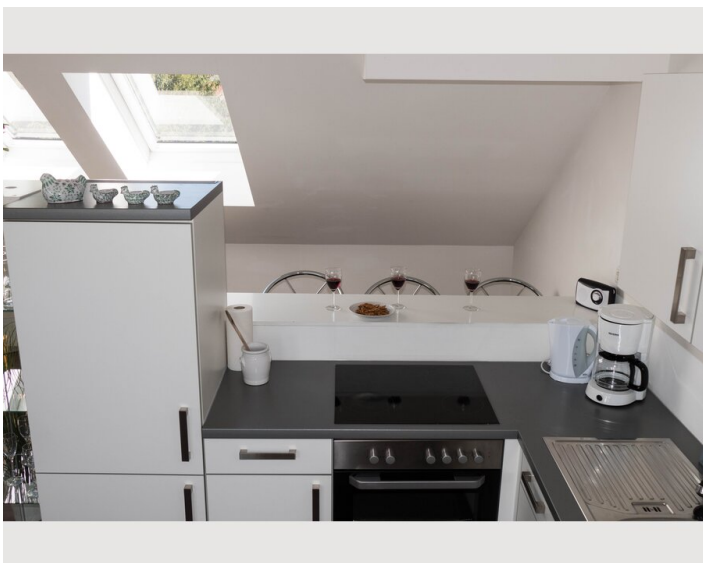
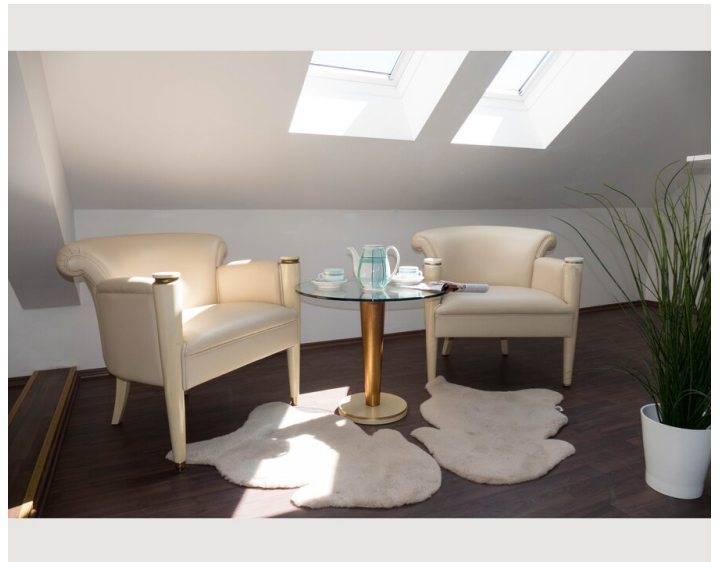
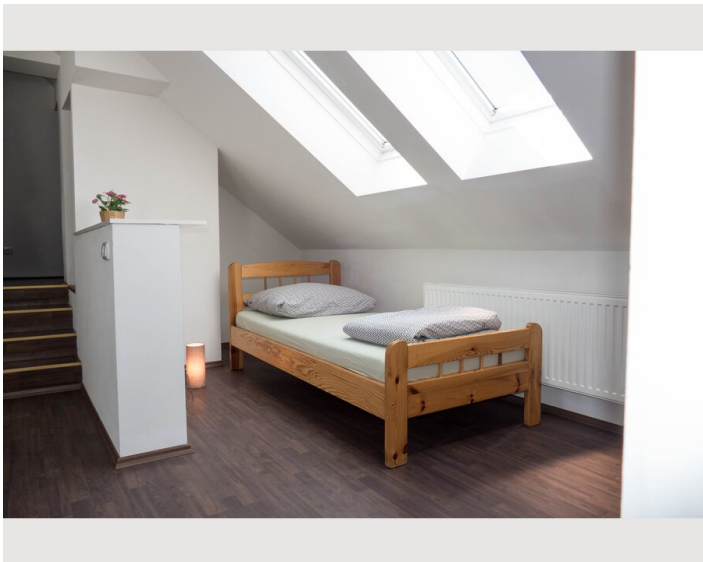
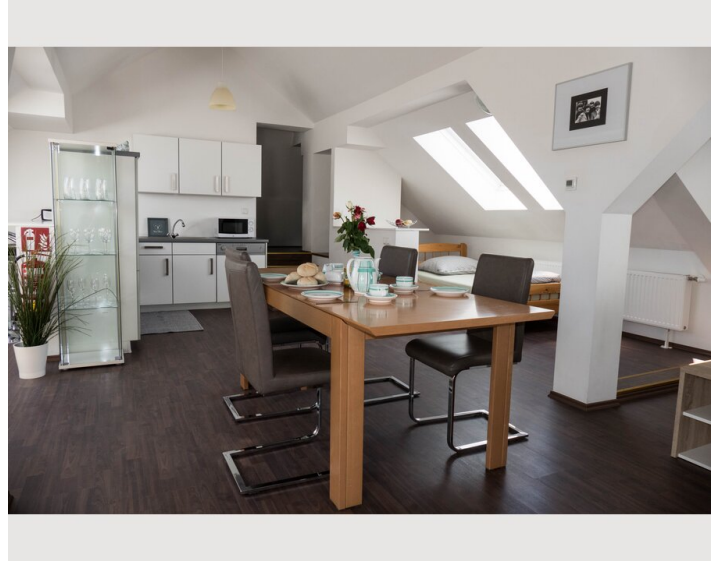
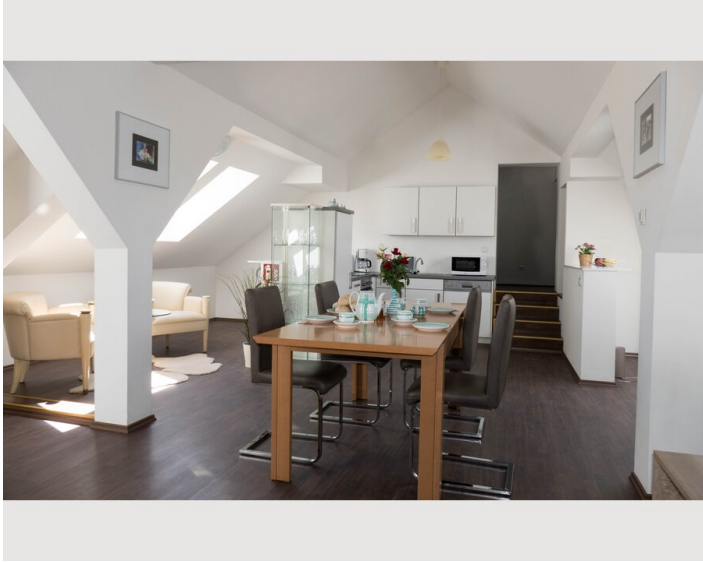
- Suitable for construction workers
- Smoking not allowed
- Regular cleaning at extra cost
- Suitable for children
- Pets forbidden
- Bicycle room free of charge

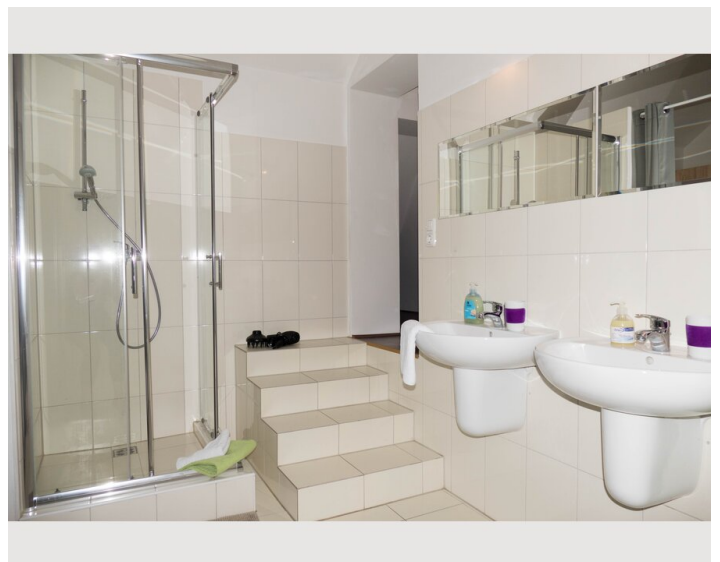
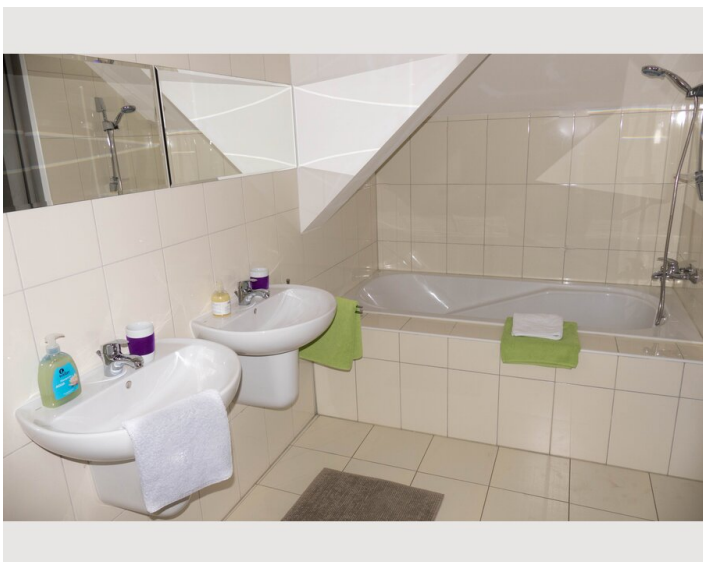
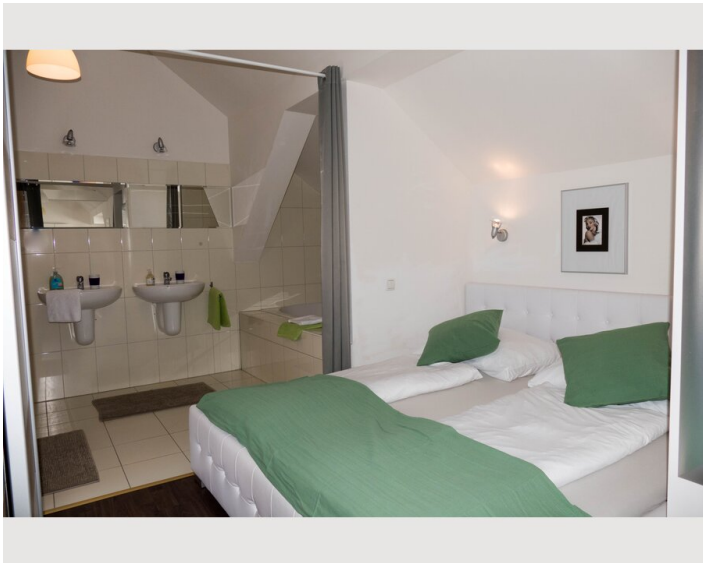
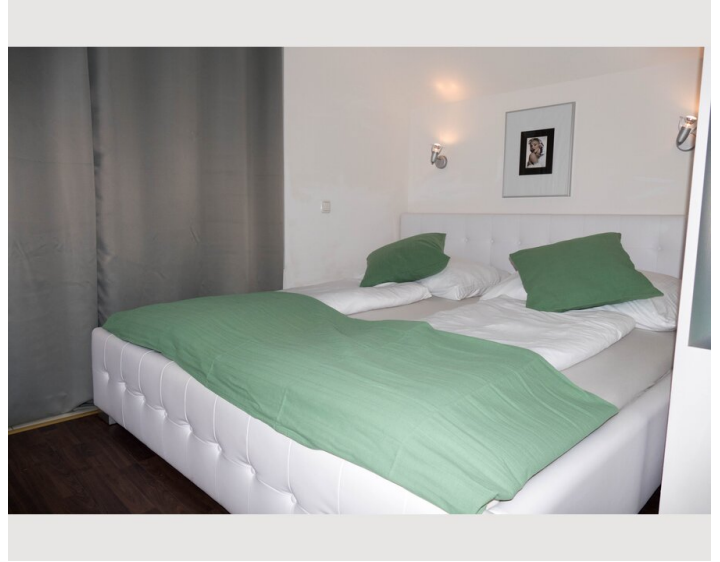
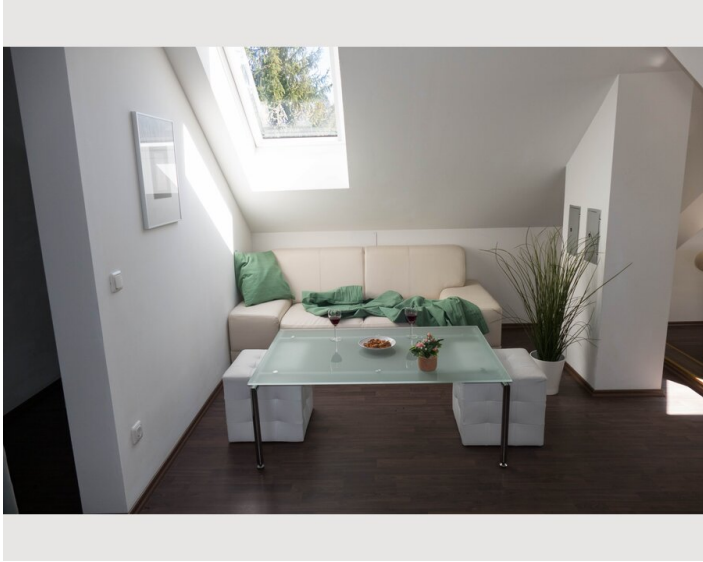
Additional services

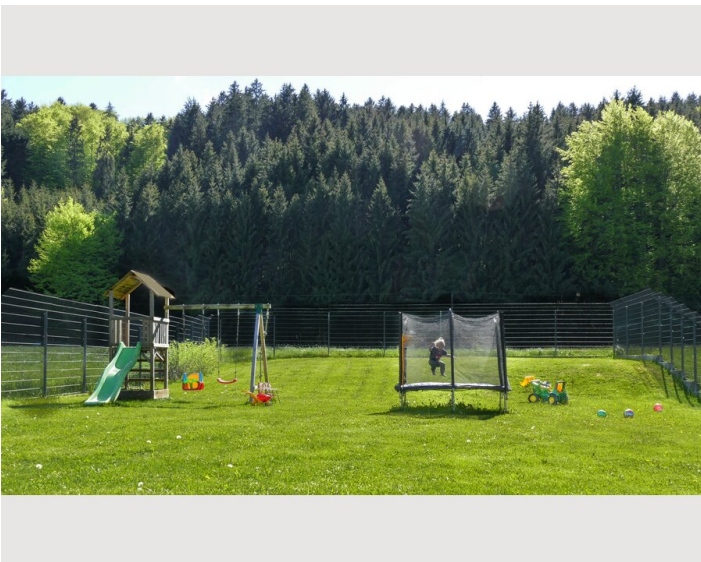
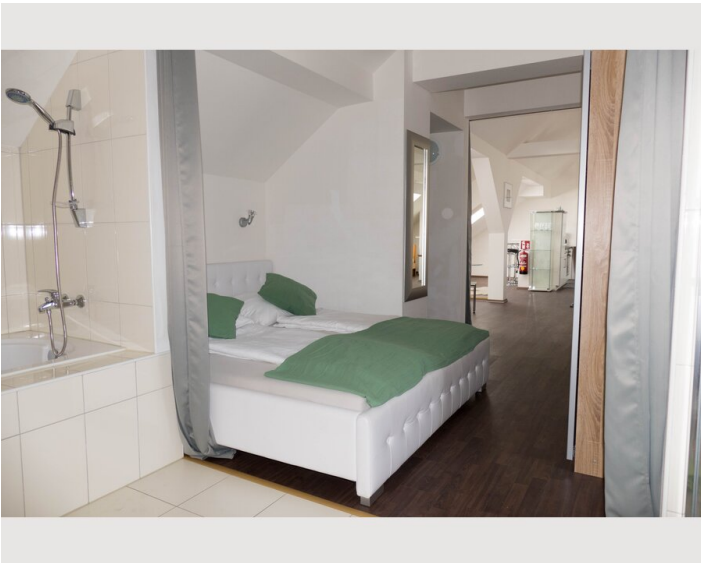
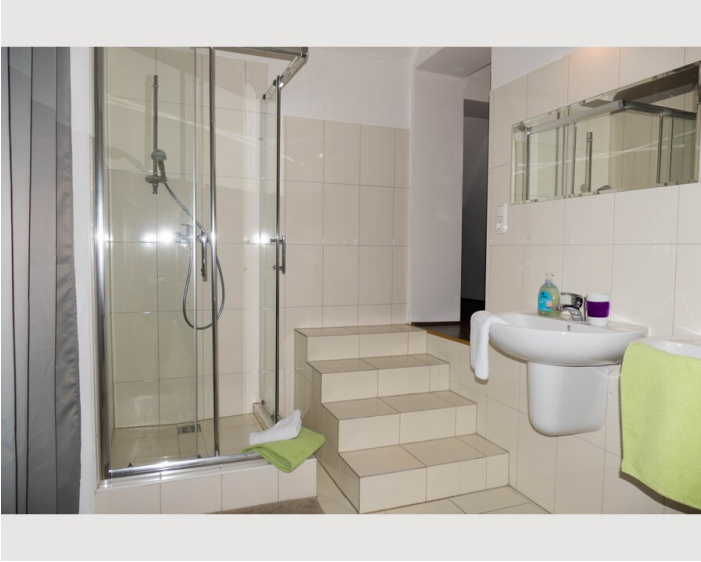
- Cleaning every 2 weeks (€ 100,00)

All prices are gross per month - billing is done directly with the lessor.

Picture gallery







Infrastructure

📍 3 minutes by car 3,5 km

🚗 5 minutes by car 3,9 km

🚶 13 minutes walk 1.1 km

🚗 7 minutes by car 4,6 km

🚗 36 minutes by car 50,9 km Salzburg

🚗 56 minutes by car 83 km Linz

In only 5 - 10 minutes you can reach the Attersee or the Mondsee, St.Georgen for shopping or inns.

In only 36 minutes you can reach Salzburg - the historical and cultural city of Mozart, the festival and the Sound of Music.

In winter you can enjoy two family-friendly ski centers Kronberg and Oberaschau nearby.

Location

