



2 ZIMMER WOHNUNG, VIENNA

When in Vienna... Temporary living in style and centrally located in 1020 Vienna including inner courtyard balcony

Object number: BARP1

[View and rent online](#)

This exceptionally bright and airy apartment is located in a stunning, recently renovated turn-of-the-century Viennese building and tastefully furnished with loving attention to detail, is conveniently located and well connected.

Period	19/01/ - 19/02/2025
Number of persons	2
Total incl. VAT.	€ 2.244,83
Security deposit	€ 1.700,00



Living space

68m²



Maximum occupancy

2 Persons



Complete accommodation [?]

1 private bathroom 1 Separated bedroom



4. floor

Elevator available



Check-in

09:00 - 23:00 Clock



Check-out

09:00 - 18:00 Clock

Sleeping options

Sleeping room



1x Double bed (1,60 m x 2 m)

Description of accommodation

This gem of a classic Viennese apartment with hardwood floors, original double doors and high ceilings lies on the fourth elevator floor of a recently renovated turn-of-the-century Viennese building in an increasingly popular location. It has been furnished and decorated with loving attention to detail, combining early 20th century Art Nouveau, Bauhaus and Art Deco antiques as well as replicas with timeless design classics and modern comfort and amenities. The fourth floor location and windows in two directions create an exceptionally bright ambiance. The balcony, a rarity in old Viennese buildings, faces out onto a green backyard.

The building is located in a quiet, green one-way street, close to transport and all necessities of daily living. The area is undergoing a rapid transformation and features an increasing number of hip restaurants. It is exceptionally well located for outdoor sports, wedged between the river/Danube Island (Donauinsel) and the Prater, Vienna's largest park.

The apartment consists of a bright and spacious entrance area, from which all the other rooms can be accessed: a designer kitchen with premium appliances and a breakfast corner, the balcony with sunlight from morning to noon, the separate toilet with washbasin and the bathroom with a shower, as well as the spacious double bedroom and living/dining room that connect to each other.

The bedroom is fully equipped for perfect sleep with motorized blackout blinds, a bed with high quality boxspring mattress (medium or firm side up on request), natural fabric bedding (winter and summer duvets in comfort size 155 cm x 220 cm), and a choice of medium or firm Tempur memory foam pillows, floor space for yoga, and a large wardrobe.

The bright and airy living room features a stylish chaise longue by Roche Bobois with premium woolly fabric by Kvadrat, a smart TV, lockable sideboard, and a small dining table or desk.

The separate toilet has a wash basin and ventilation into a light shaft. The bathroom features a spacious shower, premium fittings, and a towel warmer.

The stylish kitchen with massive wood and ceramic fronts as well as worktop has an induction hub, dishwasher, electric oven, a washer-dryer, and is fully equipped with cutlery, crockery, glasses, cookware and premium knives for keen cooks.

The entire apartment features underfloor heating. The entrance door is equipped with a smart lock. On request, a key fob can be provided, minimising the risk of a key loss and replacement costs.

Equipment features



Basic equipment

- Balcony
- Music system/docking station
- Private washing machine
- Bedclothes
- Private toilet
- Iron & ironing board
- Hairdryer
- Internet/Wifi
- TV
- Private dryer
- Towels
- Vacuum cleaner
- Cleaning utensils



First supply

- Toilet paper
- Soap
- Fridge filling on request
- shampoo
- Nespresso capsules



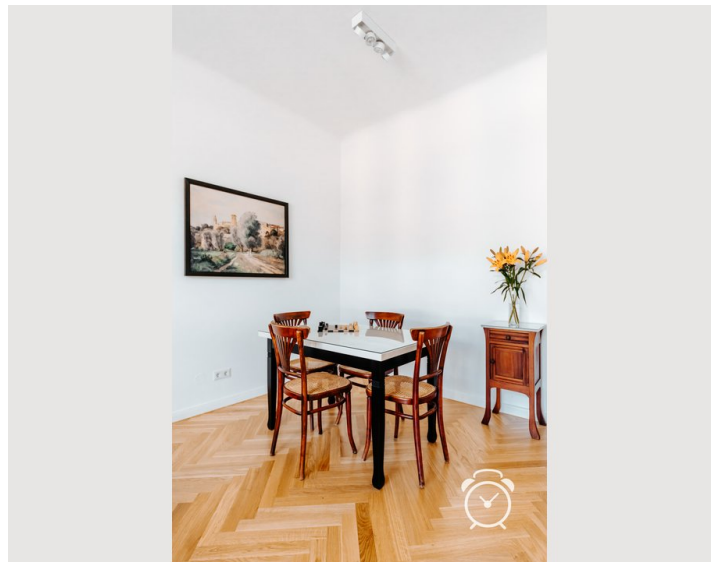
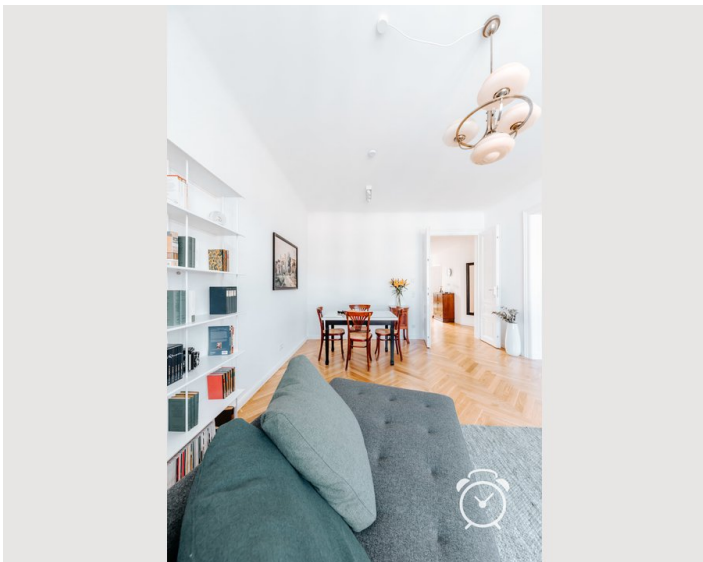
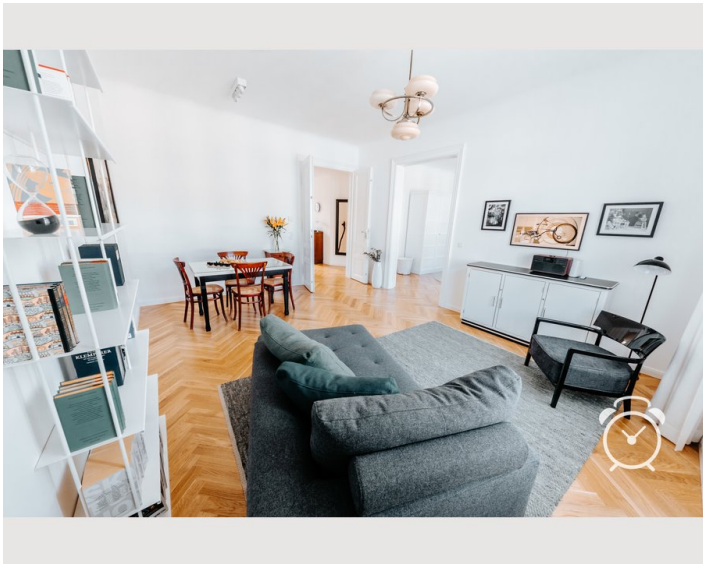
Kitchen

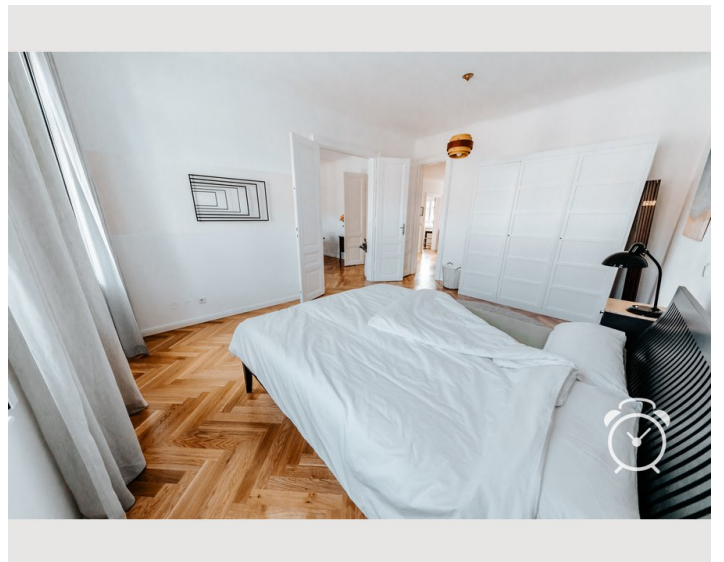
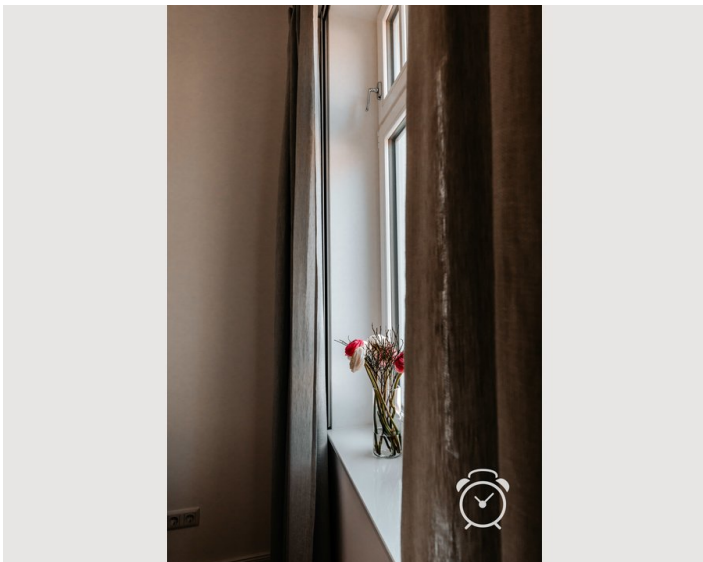
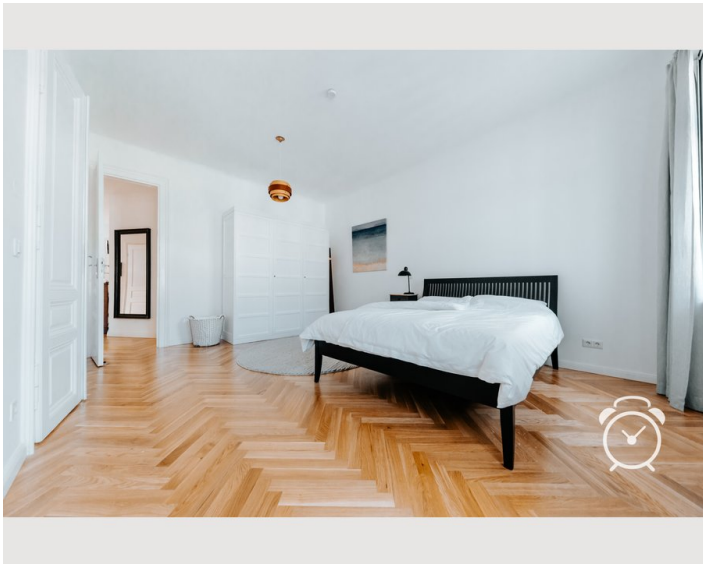
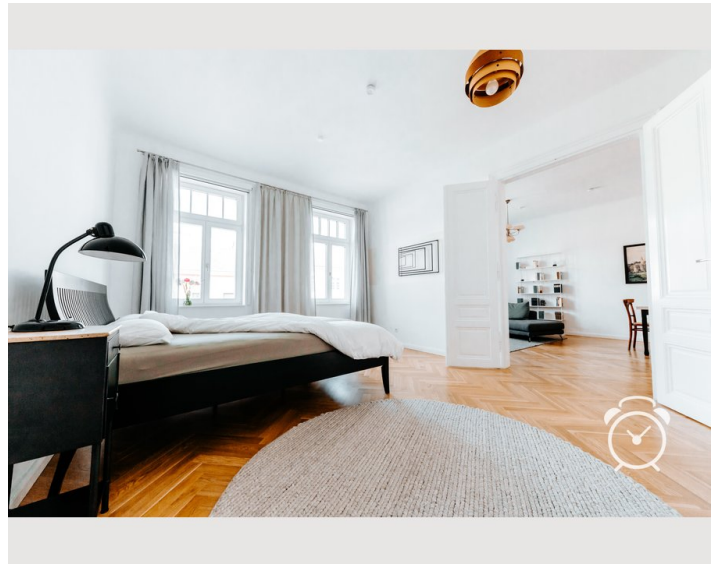
- Private kitchen
- Glasses/Tableware
- Dishwasher
- Cooking utensils
- Espresso machine
- Microwave

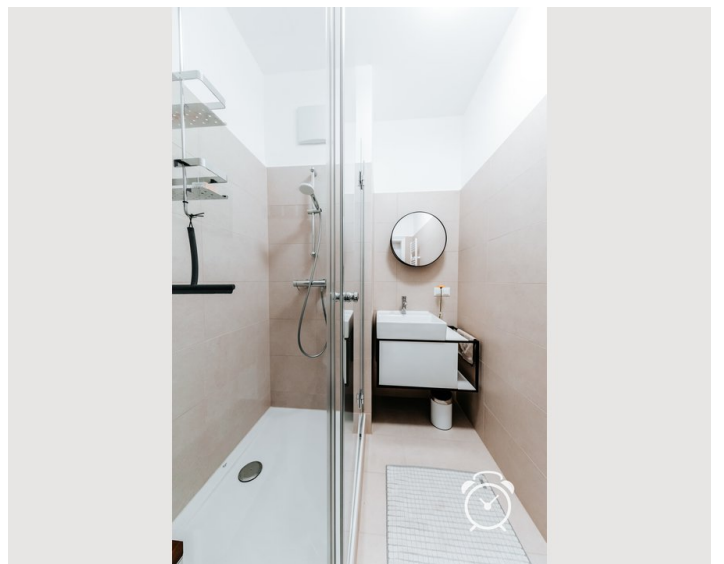
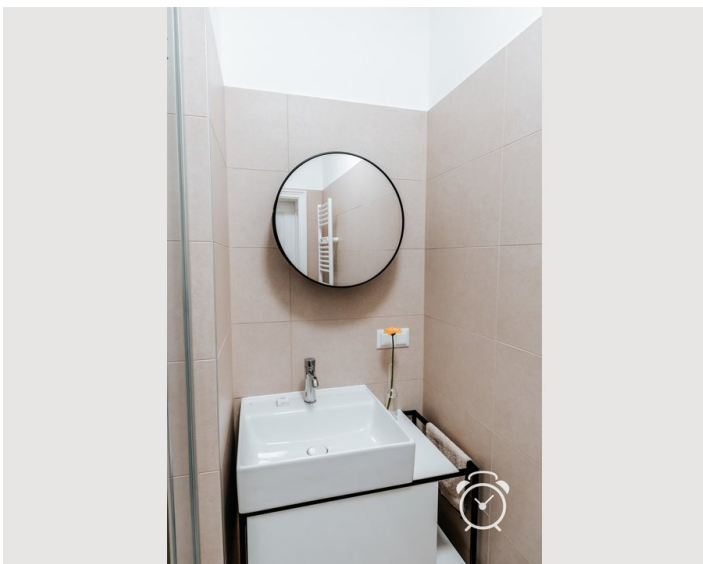
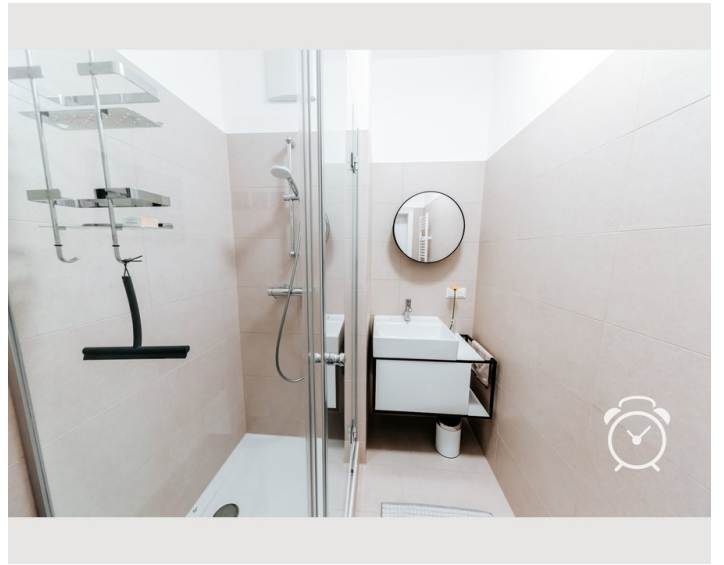
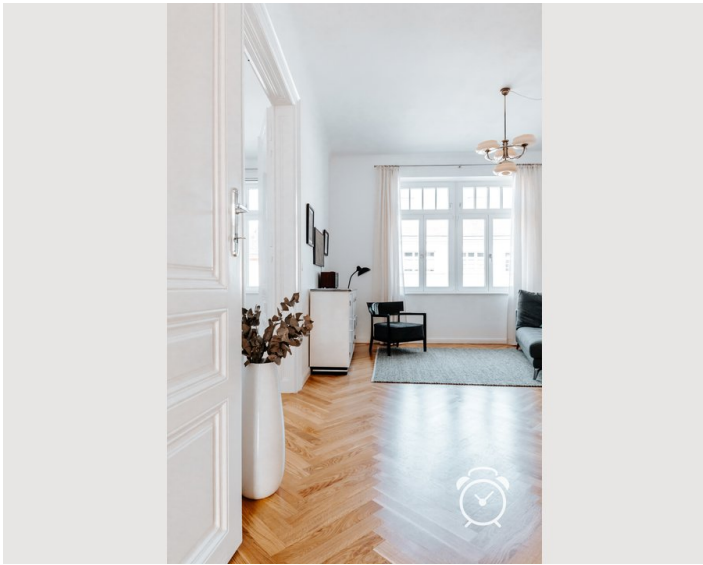
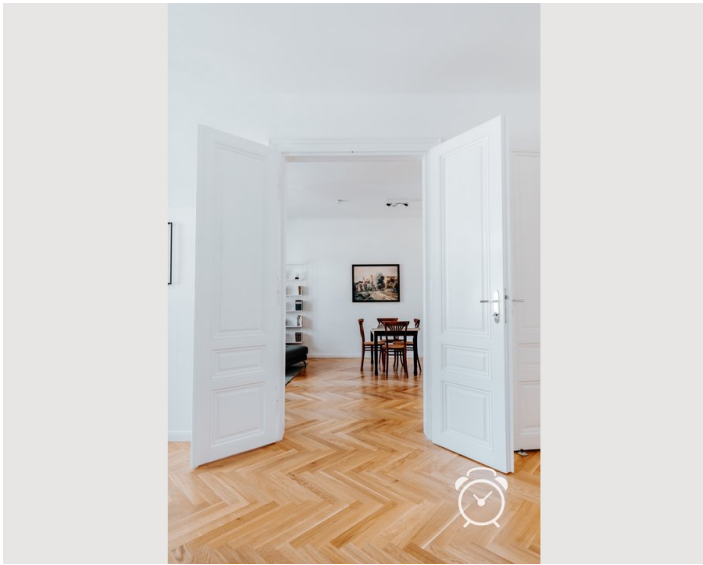
Informations

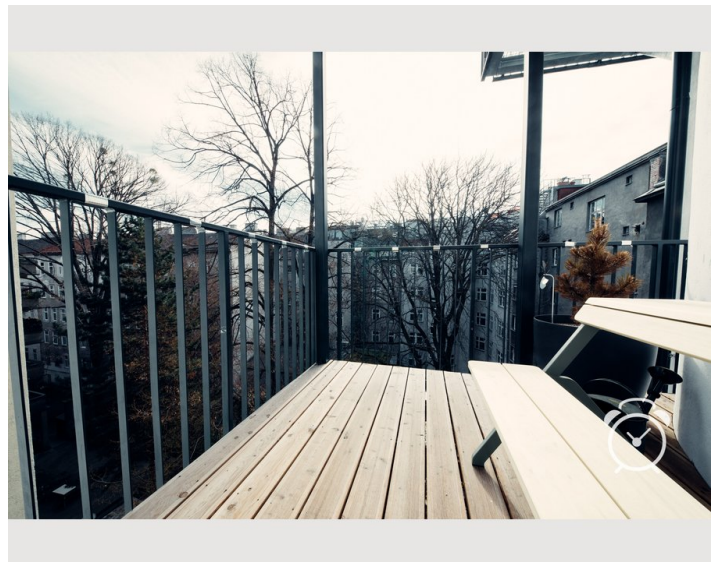
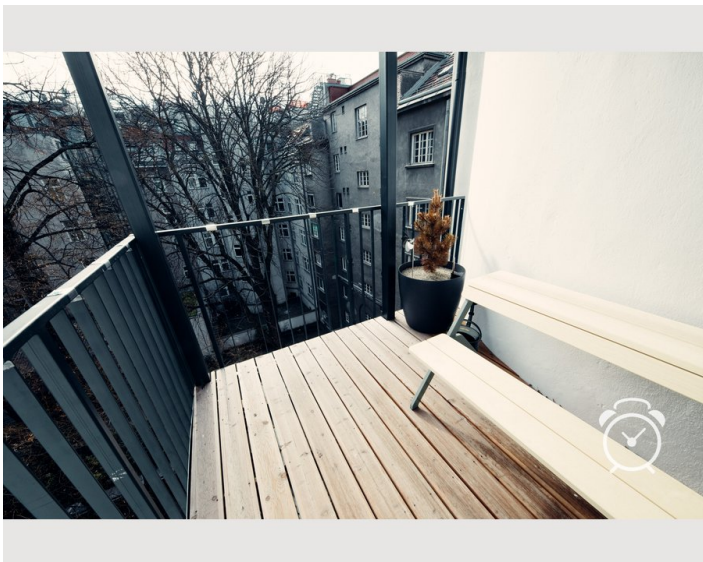
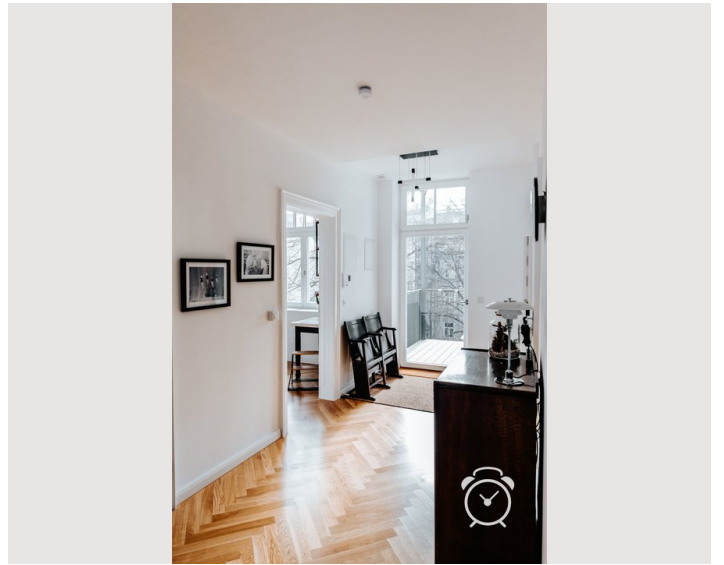
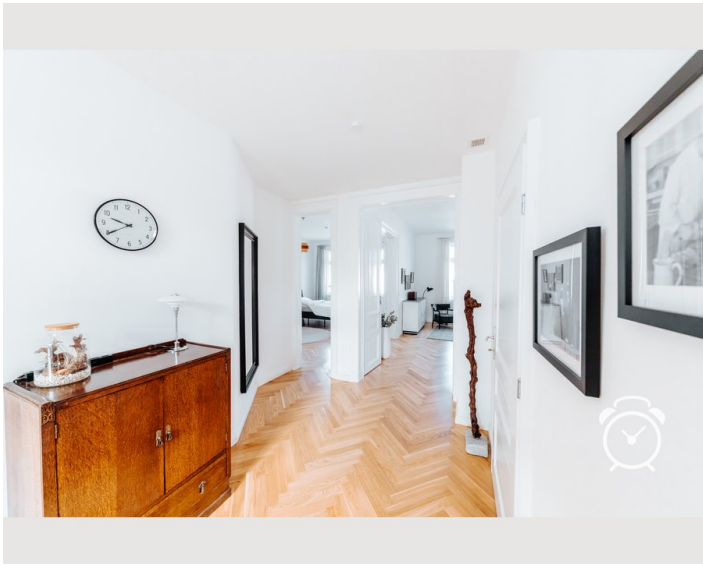
- Not suitable for children
- Short-term parking zone subject to a charge
- Private entrance
- Bicycle room free of charge
- Smoking not allowed
- Desk/Workplace
- Pets forbidden

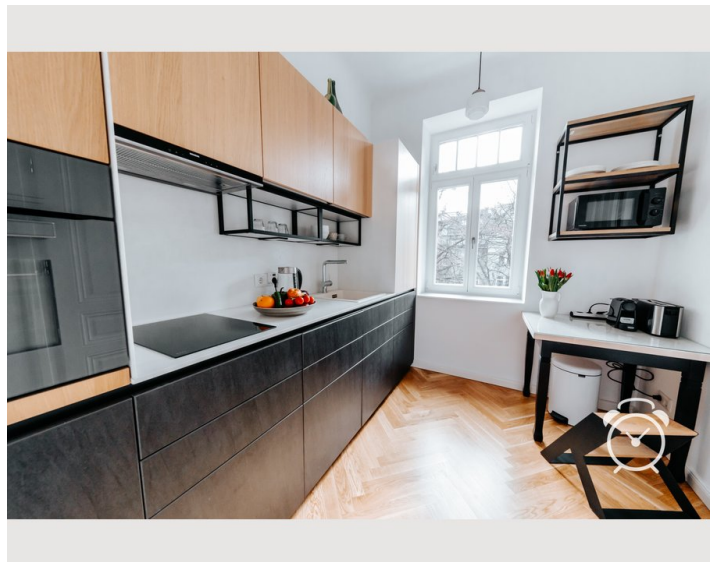
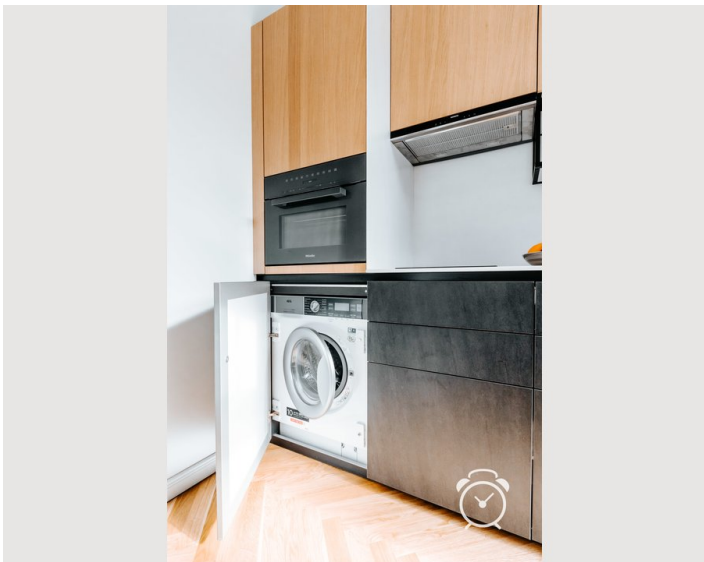
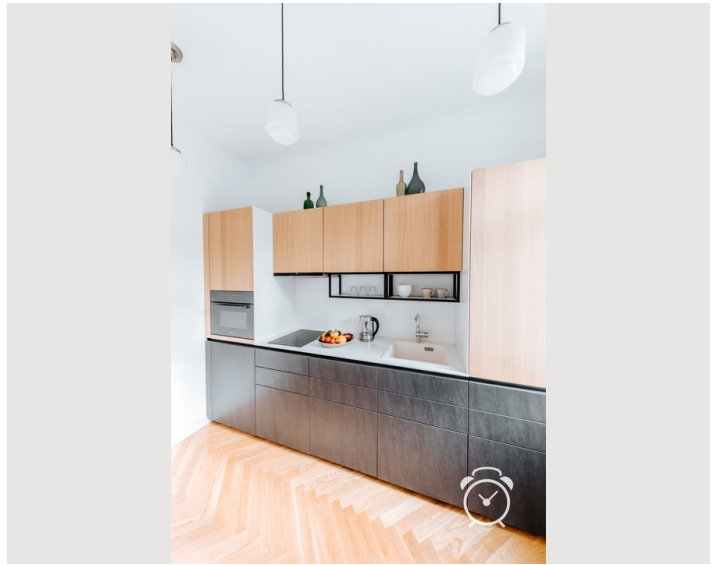
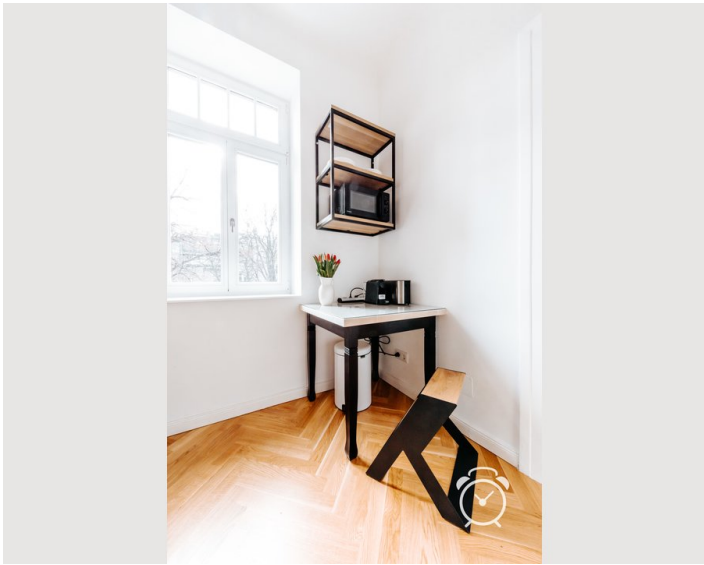
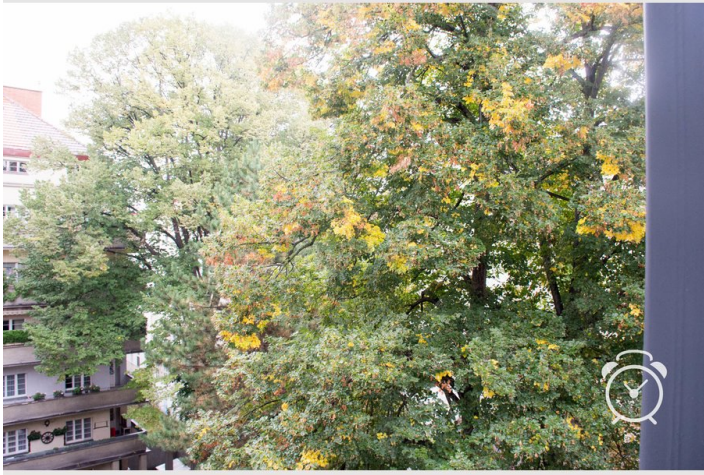
Picture gallery

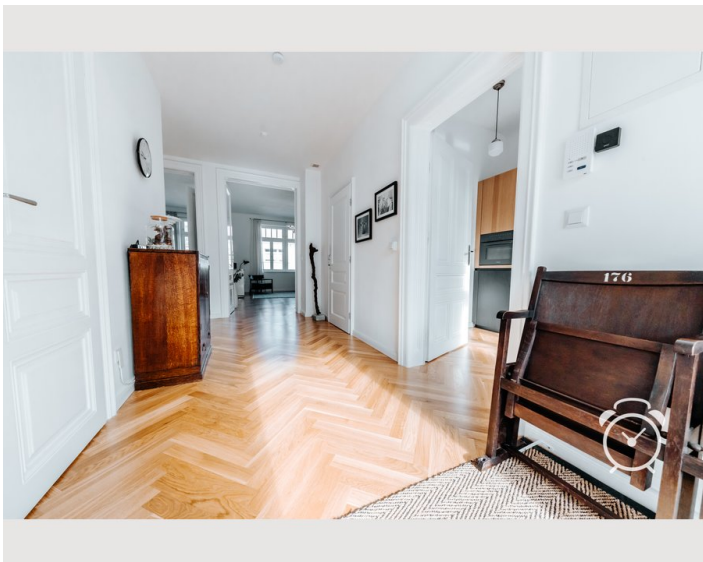
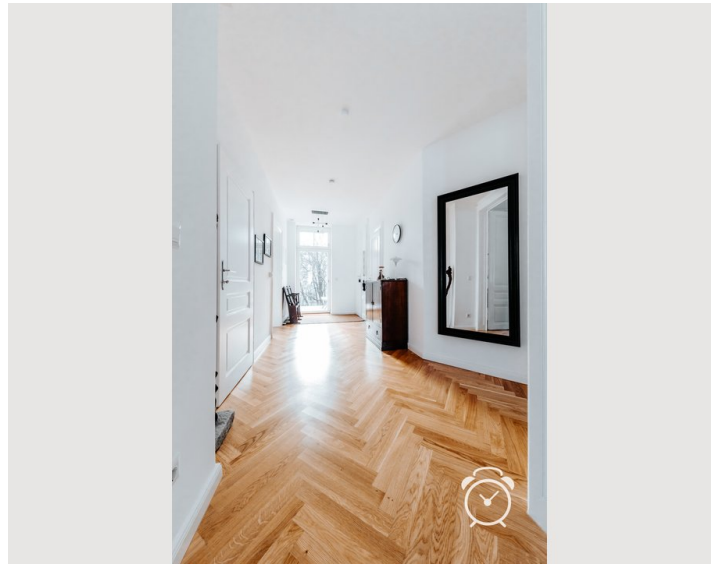
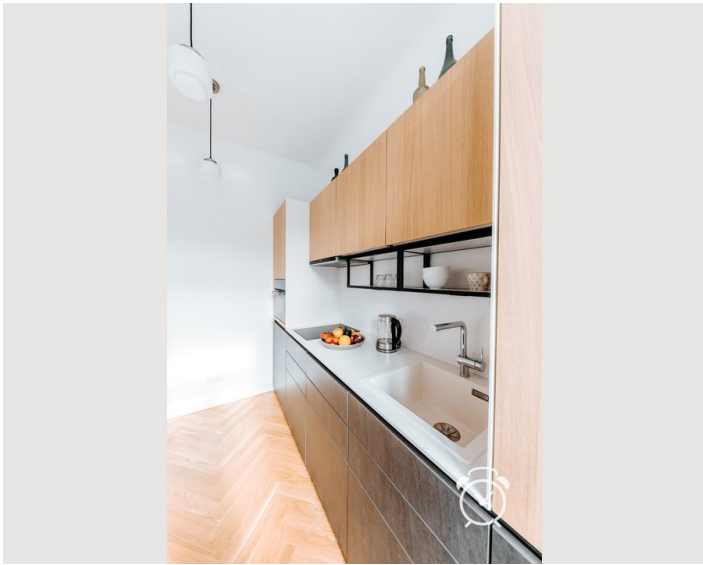






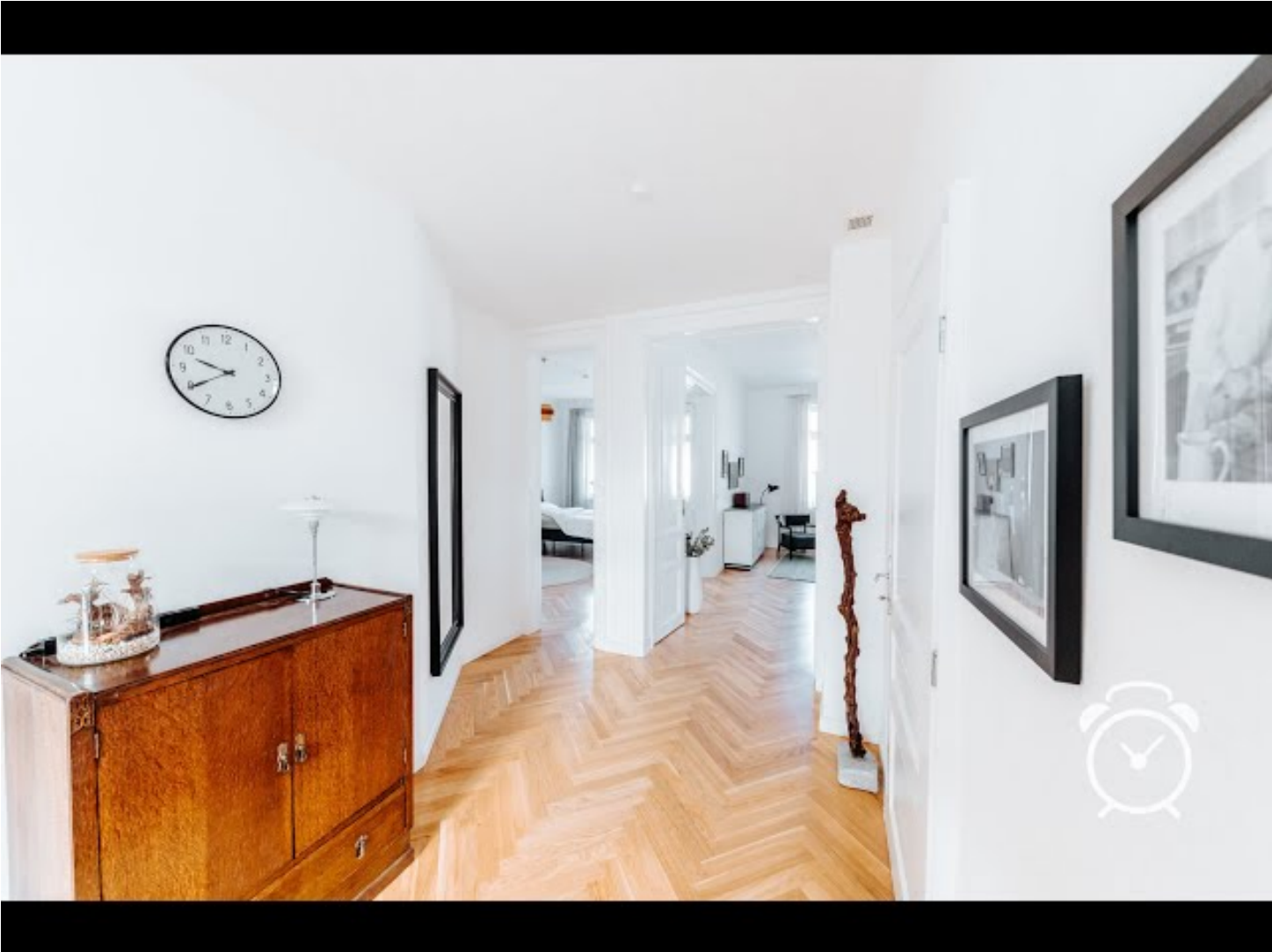












Video

Goto Video



Infrastructure

-  U1 Vorgartenstraße (elevator), 1 min walking
-  82A Harkortstraße, 3 min walking
-  Praterstern station (metro U1, U2, light rail "S-Bahn", trams O, 5), 10 min walking
-  Open air market 'Vorgartenmarkt', 1 min walking
-  11A Lasallestraße, 2 min walking
-  Corner shop with Sunday opening hours, 2 min walking

U1 Vorgartenstraße (with elevator) 1 min from the front door. 4 stops to Stephansplatz right in the centre of the old town, 2 stops to the Vienna International Center/UN site | One stop on the U1 or 10 min walking to reach transit hub Praterstern, with connections to metros (U1, U2) light rail (almost all S-Bahn lines), busses, trams, and trains to the airport Schwechat | By taxi the airport can be reached in 25 min | The open air market Vorgartenmarkt is home to organic grocery stores, fishmonger and butchers, a wood oven bakery, and talk-of-the-town eateries (such as Mochi ramen) | Major supermarkets branches (Billa, Spar, Hofer) as well as a drug store (dm) are each within 400 m of the building. The Billa supermarket at Praterstern station as well as the Nah & Frisch corner shop are even open on Sundays | Bank and cash machine/ATM are around the corner | The nearest pharmacy is 250 m on the same block | You can reach the green leisure paradise of the Danube Island (Donauinsel) as well as the Prater park in 10 min. Both are perfect for running, cycling, etc. | 10 min each to the convention centre Messe Wien and the University of Economics and Business (WU), two stops on the U1 to the Austria Center convention centre | The area boasts exceptionally green streets | The city centre/first district can be reached by bike via 2 km of bike lanes

Location

